



A single product range running on 3 different platforms

- ICX-AlphaCom
- IC-EDGE
- SIP

Onshore, Safety & Security
PRODUCT CATALOG 2024

Zenitel products are developed by the Zenitel Group and comprise a range of high-quality communications equipment and systems. In business since 1901, Zenitel's products are recognized worldwide for offering high-quality communications for both offshore and onshore installations. Primary system offerings in the Zenitel product portfolio are Public Address and Intercom. Zenitel and the company's global partner network also integrate these systems with other security devices such as Radio, CCTV, Access Control and Alarm, for a comprehensive security solution.



Single Product Range – 3 Different Platforms	4
ICX-AlphaCom System	6
IC-EDGE System	6
SIP System	7
Turbine IP Intercom Stations	8
Turbine IP Video Stations	11
IC-EDGE Video Entry Starter Kits	13
IP Intercom Stations	14
Turbine Industrial/Ex IP Stations	16
Heavy Duty IP Stations	18
IP Station Kits	19
IP Speakers with Microphones	20
Emergency Stanchions	21
ICX-AlphaCom Platform	23
Analog Intercom Stations	25
ICX-AlphaCom Application Software	27
Flowire Converter	29
Licenses	30
Zenitel Channel Partner Program	32





One single product range
3 different platforms

Invest in a product that keeps pace with changing technology, and that both anticipates and secures your future communication needs. Our equipment and devices can be used on 3 different platforms that each cater to a specific set of communication requirements.

ICX-AlphaCom

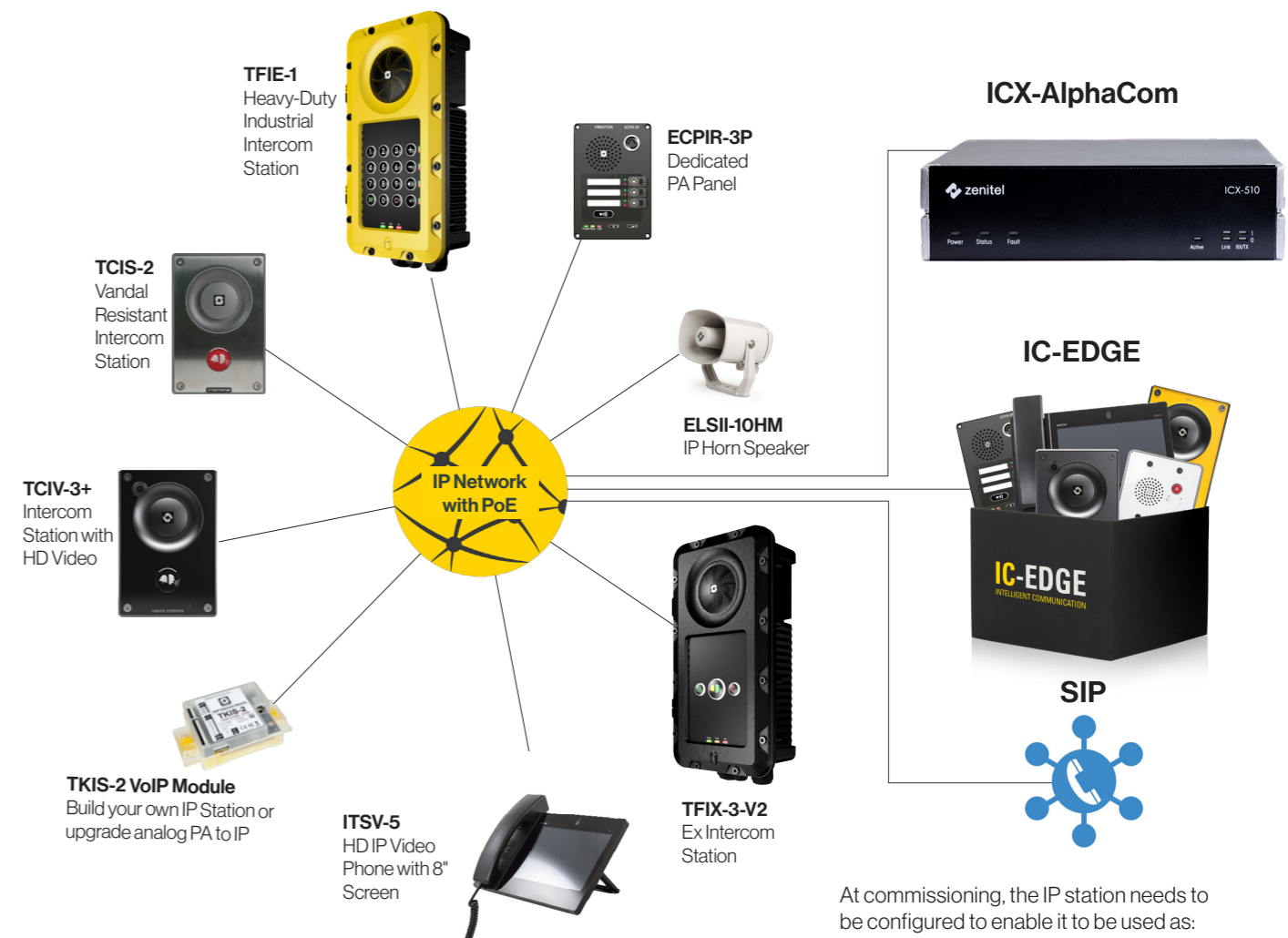
ICX-AlphaCom is all about integration. All communication devices (radio, telephone, PA, intercom, etc.) come together on the ICX-AlphaCom platform to be integrated with the overall Building Management System. This allows the use of powerful tools such as voice and audio in maintaining building security.

IC-EDGE

IC-EDGE is a self-contained communication platform that's embedded in the actual IP Intercom and IP PA devices. No external server hardware is required and configuration is easily done using a web browser. Easy to deploy, use and maintain. Ideal for SMB companies.

SIP

Our devices also support the SIP protocol. This means that they can be used on any VoIP communication platform that supports SIP. We understand that some customers prefer to keep the number of servers and other hardware to a minimum. Using SIP, you're able to hear, be heard and understood, when and where you need to, every time – all while using your existing VoIP system.



At commissioning, the IP station needs to be configured to enable it to be used as:
 ICX-AlphaCom extension
 IC-EDGE extension
 SIP extension

ICX-AlphaCom System

Our Intelligent Communication Platform provides management and security services and allows for seamless integration into the cloud and other applications.



ICX-AlphaCom Offers:

Integrated Intelligent Communication Management & Security

Streamlined and unified management
Built-in Cybersecurity – Trusted Platform

Scalability & Robustness

State-of-the-art, quad-core processing capacity
Supports up to 552 IP devices per node
Solid design with no moving parts

Interoperability

Supports industry standards like SIP and HTTP
Multiple certified platform and device integrations
Native API & cloud connectivity
Fully compatible with legacy AlphaCom system

The core of the system is the ICX-510 Intelligent Communication Gateway connecting people, devices and systems at unrivalled levels of manageability, scalability, robustness, and interoperability.

SIP System

Setting the Standard for Open and Transparent technology.

SIP is the quintessential example of an open and transparent technology that unifies voice communication. This protocol is integrated and available out-of-the-box, on every single IP Device in our portfolio.

Our SIP products work anywhere in any IPBX system, are certified for integration in Avaya, Cisco, NEC and Alcatel-Lucent systems, and have been used on these platforms for many years. In addition, our products are currently being used successfully on other platforms such as Samsung, Mitel, Asterisk, and Panasonic.

Our devices support G.711 (μ-law and A-law), G.722 and G.729.

<p>The Zenitel SIP Intercom solution has successfully passed compliance testing with Avaya IP Office and is officially recognized as compliant.</p>	<p>The Zenitel SIP Intercom solution has been compliance tested with Cisco Unified Communications Manager.</p>	<p>The Zenitel SIP Intercom solution is compatible with the following NEC platforms: All NEC IP PBX Family 3C : Softswitch SV8300 : IP PBX iS3000 : Hybrid PBX.</p>	<p>A selection of stations are compatible with Alcatel-Lucent OmniPCX Enterprise R10.</p>
---	--	---	---

IC-EDGE System

IC-EDGE is the next-generation intelligent communication system that delivers seamless integration, unrivalled sound quality, security, and ease of use, right out of the box. Minimize your hardware infrastructure, maximize audio quality and performance, and consolidate your communication needs into a centralized system requiring no external server.



System Description

Allows up to:

- 64 stations per system
- 10 VS-clients (PC)
- 10 SIP-clients (e.g., VoIP App)

Embedded server, no additional server equipment required

Automatic discovery of all Zenitel devices

Fast and easy system setup using web browser

Stations support Active Noise Reduction

Audio Messaging

Group Call with Re-Call and Answer Function

IC-EDGE mode is available on all our IP Stations

Wide range of special purpose intercom stations

Open for SIP-enabled 3rd-party devices

SIP Trunking to ISDN/GSM telephony gateways

IP Telephony Service

G711, G722 codec support

Configurable Door Relay

Network up to 50 IC-EDGE systems

...and more

NETWORK SECURITY

Our years of experience from working with large IPBX brands such as Cisco, Avaya, and Alcatel have taught us the importance of hardening our devices against network attacks. We work tirelessly to implement and upgrade security protocols to keep our devices up to date with the latest security standards.

KEEPING YOUR SYSTEM RUNNING

Our IP stations support a range of features to make it easier to upgrade and maintain firmware. We support open protocols such as SNMP, TFTP and RSTP. In addition, we offer various SIP registration methods to enable redundancy (Parallel, Serial, Top-Down and Cisco's SRST protocol). Our products are highly reliable, with an expected MTBF of 400K hours.

Turbine IP Stations

All Turbine Stations work with ICX-AlphaCom, SIP, IC-EDGE



1008111010

TCIS-1

- Amazing sound pressure level when needed
- Background noise cancellation
- Dirt, dust, and water resistant - IP66 rating
- Built to last with robust, die-cast aluminium frame - IK 08 rating
- Designed according to the norm for hearing impaired
- Supports wide set of IP and networking standards
- ONVIF Compatible
- Yellow thermoplastic front plate with one button + M and C
- Ideal for Industrial Applications



Dimensions (WxHxD): 4.7" x 7.1" x 0.9" Wt: 1.8 lbs

Accessories: 1008140010 TA-1 Turbine Compact On Wall Box, 1008140180 TA-18 Turbine Compact Flush-Mount Back Box, 1008140140 TA-14 Microphone Windscreen, 2390020100 Touchless Sensor

1008111020

TCIS-2

- Amazing sound pressure level when needed
- Background noise cancellation
- Dirt, dust, and water resistant - IP66 rating
- Built to last with robust, die-cast aluminium frame - IK10 rating
- Designed according to the norm for hearing impaired
- Supports wide set of IP and networking standards
- ONVIF Compatible
- Stainless steel front plate with one button
- Ideal for Building Security and Public Environments



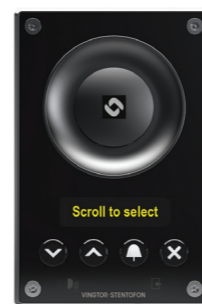
Dimensions (WxHxD): 4.7" x 7.1" x 0.9" Wt: 1.8 lbs

Accessories: 1008140010 TA-1 Turbine Compact On Wall Box, 1008140180 TA-18 Turbine Compact Flush-Mount Back Box, 1008140140 TA-14 Microphone Windscreen, 2390020100 Touchless Sensor

1008111060

TCIS-6

- Amazing sound pressure level when needed
- Background noise cancellation
- Dirt, dust, and water resistant - IP66 rating
- Built to last with robust, die-cast aluminium frame - IK08 rating
- Designed according to the norm for hearing impaired
- Supports wide set of IP and networking standards
- ONVIF Compatible
- Black thermoplastic front plate with scrolling unit for calling to an unlimited number of places
- PMOLED display
- Ideal for Building Security and Public Environments



Dimensions (WxHxD): 4.7" x 7.1" x 0.9" Wt: 1.8 lbs

Accessories: 1008140010 TA-1 Turbine Compact On Wall Box, 1008140180 TA-18 Turbine Compact Flush-Mount Back Box, 1008140140 TA-14 Microphone Windscreen, 2390020100 Touchless Sensor

1008111901

TCIS-C1

- Designed according to Disability Act requirements
- Audio Presence - crystal clear audio
- Amazing sound pressure levels when needed with automatic volume adjustment
- Background noise cancellation
- Dirt, dust, and water resistant - rating IP-65
- Built to last with robust, die-cast aluminium frame - rating IK 08
- Supports wide set of IP and networking standards
- ONVIF Compatible
- Custom front plate with two labelled buttons
- Ideal as Help Point in Public Environments



Dimensions (WxHxD): 4.7" x 7.1" x 0.9" Wt: 1.8 lbs

Accessories: 1008140010 TA-1 Turbine Compact On Wall Box, 1008140180 TA-18 Turbine Compact Flush-Mount Back Box, 1008140140 TA-14 Microphone Windscreen, 2390020100 Touchless Sensor

1008111908

TCIS-4C8

- Vandal-resistant SIP and IP Intercom
- Crystal clear audio
- Automatic volume adjustment
- Background noise cancellation
- Open flow, anechoic design eliminates "standing waves"
- Supports wide set of IP and networking standards
- ONVIF Compatible
- Stainless steel face plate with one Braille labeled button
- PoE or 24 VDC
- 6 configurable inputs/outputs
- Dirt, dust, and water resistant - rating IP66
- Built to last with robust, die-cast aluminum frame - rating IK10
- Designed according to Disability Act requirements



Dimensions (WxHxD): 4.7" x 7.1" x 0.9" Wt: 1.8 lbs

Accessories: 1008140010 TA-1 Turbine Compact On Wall Box, 1008140180 TA-18 Turbine Compact Flush-Mount Back Box, 1008140140 TA-14 Microphone Windscreen, 2390020100 Touchless Sensor

1008111030

TCIS-3

- Amazing sound pressure level when needed
- Background noise cancellation
- Dirt, dust, and water resistant - IP66 rating
- Built to last with robust, die-cast aluminium frame - IK08 rating
- Designed according to the norm for hearing impaired
- Supports wide set of IP and networking standards
- ONVIF Compatible
- Black thermoplastic front plate with one button
- Ideal for Building Security and Public Environments



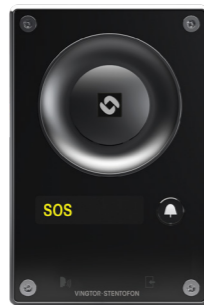
Dimensions (WxHxD): 4.7" x 7.1" x 0.9" Wt: 1.8 lbs

Accessories: 1008140010 TA-1 Turbine Compact On Wall Box, 1008140180 TA-18 Turbine Compact Flush-Mount Back Box, 1008140140 TA-14 Microphone Windscreen, 2390020100 Touchless Sensor

1008111040

TCIS-4

- Amazing sound pressure level when needed
- Background noise cancellation
- Dirt, dust, and water resistant - IP66 rating
- Built to last with robust, die-cast aluminium frame - IK08 rating
- Designed according to the norm for hearing impaired
- Supports wide set of IP and networking standards
- ONVIF Compatible
- Black thermoplastic front plate with one labelled button
- Unique labeling solution with PMOLED display
- Ideal for Building Security and Public Environments



Dimensions (WxHxD): 4.7" x 7.1" x 0.9" Wt: 1.8 lbs

Accessories: 1008140010 TA-1 Turbine Compact On Wall Box, 1008140180 TA-18 Turbine Compact Flush-Mount Back Box, 1008140140 TA-14 Microphone Windscreen, 2390020100 Touchless Sensor

1008111050

TCIS-5

- Amazing sound pressure level when needed
- Background noise cancellation
- Dirt, dust, and water resistant - IP66 rating
- Built to last with robust, die-cast aluminium frame - IK08 rating
- Designed according to the norm for hearing impaired
- Supports wide set of IP and networking standards
- ONVIF Compatible
- Black thermoplastic front plate with two labelled buttons
- Unique labeling solution with PMOLED display
- Ideal for Building Security and Public Environments



Dimensions (WxHxD): 4.7" x 7.1" x 0.9" Wt: 1.8 lbs

Accessories: 1008140010 TA-1 Turbine Compact On Wall Box, 1008140180 TA-18 Turbine Compact Flush-Mount Back Box, 1008140140 TA-14 Microphone Windscreen, 2390020100 Touchless Sensor

1008113020 / 1008113120

TCIA-2 Analog over IP Intercom

- Vandal resistant Analog over IP intercom
- Up to 60 meters extended analog interface keeps the IP network port in protected area
- Stainless steel front plate with one button
- Used together with TKIA-2 and TKIS-2
- 1008113120 TCIA-2-P is a package comprising TCIA-2, TKIA-2, TKIS-2



Dimensions (WxHxD): 4.7" x 7.1" x 0.9" Wt: 2.2 lbs

Accessories: 1008140010 TA-1 Turbine Compact On Wall Box, 1008140180 TA-18 Turbine Compact Flush-Mount Back Box

1008116010

TMIS-1 Turbine Mini

- Background Noise Cancellation
- Built to last with robust, die-cast aluminium frame
- Supports wide set of IP and networking standards
- ONVIF Compatible
- White thermoplastic front plate with 1 button
- Ideal for Building Security & Public Environments
- IP Rating: IP42



Dimensions (WxHxD): 4.6" x 4.6" x 1.6" Wt: 0.7 lbs

1008116020

TMIS-2 Turbine Mini

- Background Noise Cancellation
- Vandal Resistant Design
- 11 Gauge Stainless Steel Faceplate
- One Vandal Proof Call Button
- ONVIF Compatible
- Superb Audio Quality using G.722 Audio Codec
- Class D 10 W Amplifier



Dimensions (WxHxD): 4.6" x 4.6" x 2.1" Wt: 1.1 lbs

1008116040
TMIS-4 Turbine Mini

- Background Noise Cancellation
- Built to last with robust, die-cast aluminium frame
- Supports wide set of IP and networking standards
- ONVIF Compatible
- White thermoplastic front plate with 2 buttons
- Ideal for Building Security & Public Environments
- IP Rating: IP42



Dimensions (WxHxD): 4.6" x 4.6" x 1.6" Wt: 0.7 lbs

2390020100
Touchless Sensor

- Accessory for Turbine compact series TCIS/TCIV+
- Contactless communication for a variety of settings and applications
- Activates intercom calls using gesture recognition with simple swipe of the hand



Dimensions (WxHxD): 3.14" x 3.14" x 1.1" Wt: 0.4 lbs

1008133020
TKIA-2 Analog over IP Gateway

- Extends analog interface on TKIS-2 up to 60 m
- Keeps your IP network port in protected area
- Uses a standard CAT5 or CAT6 Ethernet cable to connect to TCIA-2 Analog over IP intercom.
- Includes cable for connection to TKIS-2
- Used together with TKIS-2 and TCIA-2



Dimensions (WxHxD): 4.6" x 2.8" x 1.25" Wt: 0.2 lbs

1008140140
TA-14 Mic Windscreen for TC1x

- Protects Turbine Compact microphone against wind noise



Dimensions (WxHxD): 4.33" x 4.9" x 6.1"

1023200033
ECPIR-3P

- Indoor intercom for console mounting
- Communication and Power over Ethernet
- ONVIF Compatible
- Three programmable buttons
- Separate PTT button
- Indicators for power, call, and fault
- Can be used with handheld or gooseneck mic
- Background Noise Cancellation
- IP Rating: IP32



Dimensions (WxHxD): 3.8" x 5.7" x 2" Weight: 1.1 lbs

Accessories: 3005020033 MB-30G Gooseneck Mic, 1023533012 PAM1H Handheld Mic

1023253008
EBMDR-8

- Button expansion module for ECPIR-3P intercom
- Powered from ECPIR-3P
- Eight programmable buttons with individual labels and status indicators
- Optional button protection covers
- Four units can be connected to one intercom



Dimensions (WxHxD): 3.8" x 5.7" x 2" Weight: 1.1 lbs

1023533012
PAM1H Handheld Mic for ECPIR-3P

- Handheld PA microphone with bracket
- Push-To-Talk button
- Electret and Noise Cancelling microphone
- IP-66



Dimensions: Length 5.6", Head Ø 1.14", Body Ø 0.9"

Weight: 0.4 lbs Cord Length: 49.2'

3005020033
MB-30G Gooseneck Mic for ECPIR-3P

- Electret Microphone - 2K ohm
- 5-pin DIN plug



Size (WxL): 1.4" x 17.5" Weight: 0.2 lbs



The Turbine Video Intercom solution offers unrivaled audio and HD video. Empower your security team with the proven audio quality of Turbine in order to act in real time and with clear communication. Through a unique combination of exceptional video, voice and powerful audio amplification for announcements, you can mitigate security risks faster than ever before.

HD Video	Field of View 145°H 109°V	HD Voice	ONVIF Conformant
----------	---------------------------	----------	------------------

1008117010
TMIV-1+ Turbine Mini Video

- HD video up to 1080p resolution
- Wide-angle lens
- ONVIF Conformant
- Supports wide set of IP and networking standards
- White thermoplastic front plate with 1 button
- IP Rating: IP44



Dimensions (WxHxD): 4.6" x 4.6" x 1.6" Wt: 0.7 lbs

1008315020
TCIV-2+

- Powerful audio technology including high sound pressure, automatic volume gain control, and active noise echo cancelling
- HD video up to 1080p resolution
- Wide-angle lens
- High-performance hardware platform with 4x Cortex-A53 CPU cores and 512MB LPDDR4 RAM
- Vandal Resistant Design
- IP66 - Dirt, dust, and water resistant
- Cybersecurity compliant
- Operates in SIP, IC-EDGE, ICX-AlphaCom modes
- Stainless steel front plate with one button
- ONVIF Conformant



Dimensions (WxHxD): 4.7" x 7.1" x 0.9" Wt: 2.2 lbs

Accessories: 1008140010 TA-1 Turbine Compact On Wall Box, 1008140180 TA-18 Turbine Compact Flush-Mount Back Box, 1008140140 TA-14 Microphone Windscreen, 2390020100 Touchless Sensor

1008315030
TCIV-3+

- Powerful audio technology including high sound pressure, automatic volume gain control, and active noise echo cancelling
- HD video up to 1080p resolution
- Wide-angle lens
- High performance hardware platform with 4x Cortex-A53 CPU cores and 512MB LPDDR4 RAM
- Vandal Resistant Design
- IP66 - Dirt, dust, and water resistant
- Cybersecurity compliant
- Operates in SIP, IC-EDGE, ICX-AlphaCom modes
- Black thermoplastic front plate with one button
- ONVIF Conformant



Dimensions (WxHxD): 4.7" x 7.1" x 0.9" Wt: 2.2 lbs

Accessories: 1008140010 TA-1 Turbine Compact On Wall Box, 1008140180 TA-18 Turbine Compact Flush-Mount Back Box, 1008140140 TA-14 Microphone Windscreen, 2390020100 Touchless Sensor

1008315050

TCIV-5+

- Powerful audio technology including high sound pressure, automatic volume gain control, and active noise echo cancelling
- HD video up to 1080p resolution
- Wide-angle lens
- High-performance hardware platform with 4 x Cortex-A53 CPU cores and 512MB LPDDR4 RAM
- Vandal Resistant Design
- IP66 - Dirt, dust, and water resistant
- Cybersecurity compliant
- Operates in SIP, IC-EDGE, ICX-AlphaCom modes
- Black thermoplastic front plate with two buttons
- Labelling solution with PMOLED displays
- ONVIF Conformant



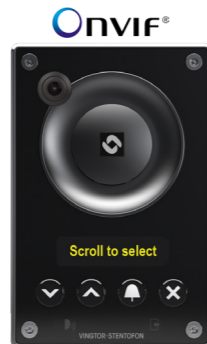
Dimensions (WxHxD): 4.7" x 7.1" x 0.9" Wt: 2.2 lbs

Accessories: 1008140010 TA-1 Turbine Compact On Wall Box, 1008140180 TA-18 Turbine Compact Flush-Mount Back Box, 1008140140 TA-14 Microphone Windscreen, 2390020100 Touchless Sensor

1008315060

TCIV-6+

- Powerful audio technology including high sound pressure, automatic volume gain control, and active noise echo cancelling
- HD video up to 1080p resolution
- Wide-angle lens
- High-performance hardware platform with 4 x Cortex-A53 CPU cores and 512MB LPDDR4 RAM
- Vandal Resistant Design
- IP66 - Dirt, dust, and water resistant
- Cybersecurity compliant
- Operates in SIP, IC-EDGE, ICX-AlphaCom modes
- Black thermoplastic front plate with scrolling PMOLED display
- ONVIF Conformant



Dimensions (WxHxD): 4.7" x 7.1" x 0.9" Wt: 2.2 lbs

Accessories: 1008140010 TA-1 Turbine Compact On Wall Box, 1008140180 TA-18 Turbine Compact Flush-Mount Back Box, 1008140140 TA-14 Microphone Windscreen, 2390020100 Touchless Sensor

1008317110

TEIV-1+

- Full Numeric Keypad Intercom, with scroll, confirm and cancel keys
- Can operate as door controller via I/O relay
- Powerful audio technology including high sound pressure, automatic gain control, and active noise echo canceling
- HD video up to 1080p resolution
- Wide-angle lens
- OLED Display
- High-performance hardware platform with 4x Cortex-A53 CPU cores and 512MB LPDDR4 RAM
- ONVIF Conformant
- IP66- Dirt, dust, and water resistant (w/TA-33)



Dimensions (WxHxD): 12" x 4.7" x 2.9" Wt: 2.3 lbs

Accessories: 1490004010 ITSV-4 IP Video phone, 1490005010 ITSV-5 IP video phone

1008318240

TEIV-4+

- Easy installation of access control end-points and seamless integration with other security systems
- Includes space for 3rd party Card Readers like HID & Elatec
- Powerful audio technology including high sound pressure, automatic gain control, and active noise echo canceling
- HD video up to 1080p resolution
- Wide-angle lens
- High-performance hardware platform with 4x Cortex-A53 CPU cores and 512MB LPDDR4 RAM
- ONVIF Conformant
- Cybersecurity compliant



Dimensions (WxHxD): 12" x 4.7" x 2.9" Wt: 2.3 lbs

Accessories: 1490004010 ITSV-4 IP Video phone, 1490005010 ITSV-5 IP video phone

IC-EDGE Video Entry Starter Kits

The IC-EDGE Video Entry Starter Kit addresses the fundamental need for intelligible audio and video, all in one, easy-to-install system. With an innovative speaker design and noise cancelling technologies, the Video Entry Starter Kit is equipped to handle any dynamic noise environment. The Kit includes the ITSV-5 with the TA-1 and either the TCIV-2+ or the TCIV-3+ turbine video station.

Key Features

- Scalable from 2 to 64 stations.
- System capacity can expand with up to 10 VS Clients, 10 third-party SIP device connections, and telephone trunking.
- The ITSV-5 is a powerful IP video phones featuring Android 11, touch screen, real-time HD video telephony, built-in WiFi, Bluetooth, and more. You can now use a single device as both your master station and your desktop phone.
- The TCIV+ can be customized, such as uploading custom audio messages, for a better user experience.
- A rigid design, 10W speaker and amp, and digital MEMS microphone make it possible for open duplex, hands-free communication up to 95dB.
- ONVIF Conformant

5552301520

TV52+ Kit

- The TCIV-2+ option offers a stainless steel front plate and die-cast aluminum frame for a robust and elegant design that meets the needs of demanding, outdoor environments with a rating of IP65.
- TA-1 on wall back box



Kit: 1008115020 TCIV-2 IP and SIP Video Intercom, 1490005010 ITSV-5 IP Touch Station with Video, 1008140010 TA-1 Turbine Compact On Wall Box

5552301530

TV53+ Kit

- The TCIV-3+ option offers a black thermoplastic front plate and die-cast aluminum frame for a timeless and elegant design that meets the needs of demanding, outdoor environments with a rating of IP65.
- TA-1 on wall back box



Kit: 1008115030 TCIV-3 IP and SIP Video Intercom, 1490005010 ITSV-5 IP Touch Station with Video, 1008140010 TA-1 Turbine Compact On Wall Box

5552301420

TV42+ Kit

- The TCIV-2+ option offers a black thermoplastic front plate and die-cast aluminum frame for a timeless and elegant design that meets the needs of demanding, outdoor environments with a rating of IP65.
- TA-1 on wall back box



Kit: 1008115020 TCIV-2 IP and SIP Video Intercom, 149004010 ITSV-4 IP Touch Station with Video, 1008140010 TA-1 Turbine Compact On Wall Box

5552301430

TV43+ Kit

- The TCIV-3+ option offers a stainless steel front plate and die-cast aluminum frame for a robust and elegant design that meets the needs of demanding, outdoor environments with a rating of IP65.
- TA-1 on wall back box



Kit: 1008115030 TCIV-3 IP and SIP Video Intercom, 149004010 ITSV-4 IP Touch Station with Video, 1008140010 TA-1 Turbine Compact On Wall Box

IP Intercom Stations

All IP Stations work with ICX-AlphaCom, SIP, IC-EDGE



1008400000 / 1008401000 / 1008401100

IPDM-V2 / IPDMH-V2 / IP Desk Master Station w/ Display

- High-contrast display with backlight for excellent readability
- Four dynamic navigation keys for quick access to system menus and directory entries.
- Ten DAK keys provide single-touch access to stations, group calls, audio monitoring, public address zones, radio channels, and telephone lines
- Remote SW upgrade, configuration & monitoring
- ONVIF Compatible
- Superb audio quality – high bandwidth codec, active noise cancellation, high output power amp

- 1008400090 IPDM-V2_P, without Handset
- 1008401090 IPDMH-V2_P, with Handset
- 1008401190 IPDMHB-V2_P, with Handset (Black)



Dimensions (WxHxD): 8.9" x 3" x 6.9" Wt: 1.5 lbs

Dimensions (WxHxD): 6.6" x 3" x 6.9" Wt: 1.1 lbs

Accessories: 1008091100 Wall bracket for Desktop

1008007000

IP Dual Display Station

- IP station with full access to all features in the ICX-AlphaCom exchange
- Remote software upgrade, configuration, and monitoring
- Powered from the IP network cable using Power over Ethernet (PoE)
- Superb audio quality – high bandwidth codec, acoustic echo cancellation, and high output power amplifier
- Displays with backlight
- The station may use up to 90 Direct Access Keys (DAK) on 9 dynamic DAK pages. The dialing keys have letters to be used for search facility in the intercom directory and display text editing
- Background Noise Cancellation



Dimensions (WxHxD): 2.8" x 5.5" x 10.6" Wt: 0.9 lbs

Accessories: 1007007010 Microphone for Dual Display Station

1008097100

Handset for CRM-V-2

- Handset module for CRM-V-2 Flush Master



Dimensions (WxHxD): 2.64" x 11" x 1.6" Wt: 0.9 lbs

Related items: 1008431000 CRM-V-2

1008097500

Gooseneck Mic for CRM-V-2

- Noise cancelling gooseneck microphone for CRM-V-2 IP Flush Master
- Ideal for Public Address applications and control center



Size (WxHxD): 3.5" x 1.3" x 1.8" Wt: 0.2 lbs

Related items: 1008431000 CRM-V-2

1490004010

ITSV-4 HD IP Video Phone

- 16 lines with up to 16 SIP accounts
- 4-core 1.8GHz ARM Cortex A55 processor with 2GB RAM and 16GB eMMC Flash
- Runs on Android 11 operating system
- 5.0" (1280x720) capacitive 5-point touch screen HD TFT LCD
- Built-in Bluetooth 5.0 for syncing with mobile devices and connecting Bluetooth headsets and connecting Bluetooth headsets
- Integrated dualband WiFi (2.4GHz & 5GHz)
- Built-in PoE/PoE+ for power and network connection
- Built-in 2 mega-pixel CMOS tiltable camera with privacy shutter, 720p 30fps
- 10-way audio conferencing and 3-way video conferencing capability
- Dual-mic HD speakerphone with noise reduction, advanced echo cancellation, and excellent doubletalk performance
- Dual-switched auto-sensing 10/100/1000Mbps network ports network ports



Size (WxHxD): 243 x 82 x 210 mm Wt: 1 kg



1490005010

ITSV-5 HD IP Video Phone

- 16 lines with up to 16 SIP accounts
- 4-core 2.0GHz ARM Cortex A55 processor with 4GB RAM and 16GB eMMC Flash
- Runs on Android 11 operating system
- 8" (1200x800) capacitive 10-point touch screen HD IPS LCD
- Built-in Bluetooth 5.0 for syncing with mobile devices and connecting Bluetooth headsets
- Integrated dual-band WiFi 6 (2.4GHz and 5GHz)
- Built-in PoE/PoE+ to power the device and give it a network connection
- Built-in 2 mega-pixel CMOS tiltable camera with privacy shutter, 1080p 30fps
- 12-way audio conferencing and 3-way video conferencing capability
- Dual-mic HD speakerphone with noise reduction, advanced echo cancellation, and excellent double-



Size (WxHxD): 263 x 82 x 174 mm Wt: 1.08 kg



1008415000

IP-CROR IP Station for Cleanrooms and Operating Rooms

- Chemical resistant and anti-bacterial front surface for easy cleaning
- Robust, aluminium front plate to withstand maintenance and cleaning conditions
- Large, high-contrast display with backlight for excellent readability
- 4 dynamic navigation keys plus 4 DAKs for quick access to system menus and directory entries.
- Audio technology providing loudspeaking handsfree duplex communication from any location in the room
- ONVIF Compatible
- Clean relay output contact for control of external equipment
- Designed to meet the requirements of ISO 14644-1, ISO Designation 5



Dimensions (WxHxD): 4.96" x 11" x 1.18" Wt: 1.4 lbs

Accessories: 1008098700 Flush Mount Back Box

1008431000

CRM-V-2 IP Flush Master with Display

- Robust aluminium front plate
- Large, high-contrast display with backlight for excellent readability
- 4 dynamic navigation keys and 4 DAKs for quick access to system menus and directory entries.
- White light behind all keys for excellent readability in dark environments
- Integrated data switch with advanced networking and security functions
- ONVIF Compatible
- Superb audio quality – high bandwidth codec, active noise cancellation, acoustic echo cancellation, and high output power amplifier
- Clean relay output contact for control of external equipment



Dimensions (WxHxD): 4.96" x 11" x 1.18" Wt: 1.4 lbs

Accessories: 1008097500 Gooseneck Microphone, 1008097100 Handset, 1008098700 Flush Mount Back Box, 2810020004/5/6 Desk Stand

1008010100

CRM-V-DAK48 IP DAK Expansion Module

- Extends CRM-V-2 IP Flush Master Station with 48 programmable DAK keys (direct access keys)
- Ideal for control room applications
- Visual indications with two LEDs (green/red) per DAK key
- All keys have backlight (adjustable)
- Easy labeling of keys
- Advanced call request handling with visual indications
- CCTV and intercom integration



Dimensions (WxHxD): 4.96" x 11" x 1.18" Wt: 1.4 lbs

Accessories: 1009648001 License for CRM-V-DAK48, 1008010101 Label paper for CRM-V-DAK48

1008021010

Vandal Resistant Intercom VR3G-1

- Powerful audio technology, including high sound pressure, automatic gain control, and active noise echo canceling
- Vandal Resistant Design with IK10
- IP66 - Dirt, dust, and water resistant
- Tamper switch
- Cybersecurity compliant
- Can operate in SIP, IC-EDGE, and ICX-AlphaCom mode



Dimensions (WxHxD): 6.2" x 4.4" x 2.3" Wt: 1 lbs



1008021015

Vandal Resistant Intercom VR3G-1P

- Powerful audio technology, including high sound pressure, automatic gain control, and active noise echo canceling
- Vandal Resistant Design with IK10
- IP66 - Dirt, dust, and water resistant
- Tamper switch
- Cybersecurity compliant
- Can operate in SIP, IC-EDGE, and ICX-AlphaCom mode
- Piezo Call Button with self-test capability (VR3G-1P)



Dimensions (WxHxD): 6.2" x 4.4" x 2.3" Wt: 1 lbs



1008041200

Vandal Resistant Substation TKIE

- Compatible with ICX-AlphaCom, IC-EDGE, and SIP
- Vandal and water resistant
- Designed in stainless steel (AISI 316L) to withstand corrosion
- Remote software upgrade, configuration, and monitoring
- Integrated data switch with advanced networking and security functions
- Two Relay outputs for remote control, e.g. doors, signal lamps, and gates
- Powered from the IP network cable using Power over Ethernet (PoE)
- Superb audio quality – high bandwidth codec, active noise cancellation, acoustic echo cancellation, and high output power amplifier



Dimensions (WxHxD): 7.1" x 3.6" x 1.8" Wt: 1.8 lbs

Turbine Industrial/ EX IP Stations



1008122010

TFIE-1

- IP intercom for industrial environments
- Dual Ethernet connectivity for redundant networks
- PoE powered
- Auxiliary DC power for redundancy
- Dual relay outputs
- Full Keypad + 6 configurable I/Os
- Dust- and water-protected to IP66 rating
- Accessories include Handheld PTT, Headset with ON/OFF, and PTT and Handset with PTT
- Monitoring and self-diagnostics of critical functionality
- ONVIF Compatible
- Visible status indicators on front panel
- Background Noise Cancellation



Dimensions (WxHxD): 7" x 13.6" x 4" Weight: 4.2 lbs

Accessories: 1023533312 EMMAI-2H Mic, 1008140230 TA-23 Handset, AK5850HS Headset, 1008140225 TA-22B Cable & Plugbox, 1008140100 TA-10 Relay Module

1008122020

TFIE-2

- IP intercom for industrial environments
- Dual Ethernet connectivity for redundant networks
- PoE powered
- Auxiliary DC power for redundancy
- Dual relay outputs
- 6 configurable I/Os
- Dust- and water-protected to IP66 rating
- Accessories include Handheld PTT, Headset with ON/OFF, and PTT and Handset with PTT
- Monitoring and self-diagnostics of critical functionality
- ONVIF Compatible
- Visible status indicators on front panel
- Background Noise Cancellation



Dimensions (WxHxD): 7" x 13.6" x 4" Weight: 4.2 lbs

Accessories: 1023533312 EMMAI-2H Mic, 1008140230 TA-23 Handset, AK5850HS Headset, 1008140225 TA-22B Cable & Plugbox, 1008140100 TA-10 Relay Module

1008123130

TFIX-3-V2

- Ex IP intercom for potentially explosive environments - Directive 2014/34/EU
- Ethernet compatible 2-wire interface
- Dust- and water-protected to IP66 rating
- Monitoring and self-diagnostics of critical functionality
- ONVIF Compatible
- Visible status indicators on front panel
- Background Noise Cancellation



Dimensions (WxHxD): 7" x 13.6" x 4" Weight: 8.8 lbs

Accessories: 1023533511 EMMAX-1H Mic, 1008150030 TAX-3 Handset, AK5850HS Headset, 1008150025 TA-2B Cable & Plugbox

1008140230 / 1008150030

TA-23 / TAX-3 Handset with PTT

- PTT-key for operation in noisy environments
- Noise-cancelling microphone
- High-quality, digital background noise reduction
- HD-voice compatible
- IP Rating: IP66
- TA-23 for Turbine Industrial intercoms
- TAX-3 for Turbine Ex intercoms



Dimensions (WxHxD): 7.8" x 2.8" x 2" Weight: 0.7 lbs

1023533312 / 1023533511

EMMAI-2H / EMMAX-1H Mic

- Handheld microphone PTT key
- Noise cancelling microphone
- High-quality, digital background noise reduction
- EMMAI-2H for Turbine Industrial intercoms
- EMMAX-1H for Turbine Ex intercoms



Dimensions (WxHxD): 1.7" x 2.7" x 0.8" Weight: 0.5 lbs

1008122060

TFIE-6

- IP intercom for industrial environments
- Dual Ethernet connectivity for redundant networks
- PoE powered
- Auxiliary DC power for redundancy
- Dual relay outputs
- Full Keypad + 6 configurable I/Os
- Dust- and water-protected to IP66 rating
- Accessories include Handheld PTT, Headset with ON/OFF, and PTT and Handset with PTT
- Monitoring and self-diagnostics of critical functionality
- ONVIF Compatible
- Visible status indicators on front panel
- PMOLED display with scrolling unit for calling to unlimited number of places



Dimensions (WxHxD): 7" x 13.6" x 4" Weight: 4.2 lbs

Accessories: 1023533312 EMMAI-2H Mic, 1008140230 TA-23 Handset, AK5850HS Headset, 1008140225 TA-22B Cable & Plugbox, 1008140100 TA-10 Relay Module

1008123110

TFIX-1-V2

- Ex IP intercom for potentially explosive atmospheres - Directive 2014/34/EU
- Ethernet compatible 2-wire interface
- Dust- and water-protected to IP66 rating
- Monitoring and self-diagnostics of critical functionality
- ONVIF Compatible
- Visible status indicators on front panel
- Background Noise Cancellation



Dimensions (WxHxD): 7" x 13.6" x 4" Weight: 8.8 lbs

Accessories: 1023533511 EMMAX-1H Mic, 1008150030 TAX-3 Handset, AK5850HS Headset, 1008150025 TA-2B Cable & Plugbox

1008123120

TFIX-2-V2

- Ex IP intercom for potentially explosive atmospheres - Directive 2014/34/EU
- Ethernet compatible 2-wire interface
- Dust- and water-protected to IP66 rating
- Monitoring and self-diagnostics of critical functionality
- ONVIF Compatible
- Visible status indicators on front panel
- Background Noise Cancellation



Dimensions (WxHxD): 7" x 13.6" x 4" Weight: 8.8 lbs

Accessories: 1023533511 EMMAX-1H Mic, 1008150030 TAX-3 Handset, AK5850HS Headset, 1008150025 TA-2B Cable & Plugbox

AK5850HS

AK5850HS Ex-Approved Headset

- Rugged headset for Ex application
- Noise-cancelling microphone
- High-quality, digital background noise reduction
- HD-voice compatible
- High quality audio
- Optional in-ear monitors may be connected for added damping in extreme environments
- IP Rating: IP66
- Standard 4-pole Nexus connector for easy connection/replacement
- For use with 1008150025 Ex-approved Cable for headset with PTT
- Designed for Turbine Ex explosion-proof intercoms



Dimension (WxHxD): 8.3" x 5.9" x 2.8" Weight: 0.9 lbs

Accessories: TA-22B / TAX-2B Ex-approved Cable and Plugbox

1008140225 / 1008150025

TA-22B / TAX-2b Cable and Plugbox for AK5850HS Headset

- Compact, rugged plugbox with PTT (10 m cable)
- For use with AK5850HS Headset
- TA-22B for Turbine Industrial intercoms
- TAX-2B for Turbine Ex intercoms



Length: 32.8'

Heavy Duty IP Stations



1008472220

IPHDT-DY IP Heavy Duty Telephone, Door, Hotline

- Made for critical communication in rough environments like roads, tunnels, ships
- Water and dust resistant (IP66)
- Very durable with 5 mm aluminium casing and stainless steel components
- Magnetic reed hook-switch ensures minimal wear and tear
- Supports VoIP with SIP and CCoIP with ICX-AlphaCom
- Supports local power and Power over Ethernet (PoE)
- Integrated data switch with advanced networking and security functions
- ONVIF Compatible
- Supports HD Voice



Dimensions (WxHxD): 8.1" x 12.6" x 5.8" Wt: 11.9 lbs

Accessories: 1020600992 IRR-3 Relay Box 24V DC or 220V AC - Signal Unit WT - IP-66

1008472120

IPHDT-Y IP Heavy Duty Telephone, Hotline

- Made for critical communication in rough environments like roads, tunnels, ships
- Water and dust resistant (IP66)
- Very durable with 5 mm aluminium casing and stainless steel components
- Magnetic reed hook-switch ensures minimal wear and tear
- Supports VoIP with SIP and CCoIP with ICX-AlphaCom
- Supports local power and Power over Ethernet (PoE)
- Integrated data switch with advanced networking and security functions
- ONVIF Compatible
- Supports HD Voice



Dimensions (WxHxD): 8" x 12.6" x 4.7" Wt: 11 lbs

Accessories: 1020600992 IRR-3 Relay Box 24V DC or 220V AC - Signal Unit WT - IP-66

1008472100

IPHDT-KY IP Heavy Duty Telephone, Full Keypad

- Made for critical communication in rough environments like roads, tunnels, ships
- Water and dust resistant (IP66)
- Very durable with 5 mm aluminium casing and stainless steel components
- Magnetic reed hook-switch ensures minimal wear and tear
- Supports VoIP with SIP and CCoIP with ICX-AlphaCom
- Supports local power and Power over Ethernet (PoE)
- Integrated data switch with advanced networking and security functions
- ONVIF Compatible
- Supports HD Voice



Dimensions (WxHxD): 8" x 12.6" x 4.7" Wt: 11 lbs

Accessories: 1020600992 IRR-3 Relay Box 24V DC or 220V AC - Signal Unit WT - IP-66

1008472200

IPHDT-KDY IP Heavy Duty Telephone, Door, Full Keypad

- Made for critical communication in rough environments like roads, tunnels, ships
- Water and dust resistant (IP66)
- Very durable with 5 mm aluminium casing and stainless steel components
- Magnetic reed hook-switch ensures minimal wear and tear
- Supports VoIP with SIP and CCoIP with ICX-AlphaCom
- Supports local power and Power over Ethernet (PoE)
- Integrated data switch with advanced networking and security functions
- ONVIF Compatible
- Supports HD Voice



Dimensions (WxHxD): 8.1" x 12.6" x 5.8" Wt: 11.9 lbs

Accessories: 1020600992 IRR-3 Relay Box 24V DC or 220V AC - Signal Unit WT - IP-66

1008070010

IP Hotline Station

- Made for critical communication in roadside and tunnel environments
- Water and dust resistant
- Designed in flame and chip resistant plastic
- Superb audio quality
- Supports VoIP with SIP and CCoIP with ICX-AlphaCom
- Supports local power and PoE
- Advanced supervision functions



Dimensions (WxHxD): 4.9" x 9.9" x 6.4" Wt: 2.2 lbs

Station Kits

1008560101

Multi-Purpose Intercom Module

- Build tailored door entry help points and information terminals powered by Zenitel technology
- Expand capabilities by connecting 3rd party devices such as touchscreen, keypad, camera, and microphone
- Reduced development cost with open standard connectors and interfaces such as USB, HDMI, and dry contacts
- Zenitel audio presence - Crystal clear audio
- ONVIF Compatible
- Special audio functions: automatic volume control, sound level detection, and digital noise reduction provide high speech quality in any situation.
- Full open duplex provides free-flowing hands-free communication
- High-quality and high-power 15W audio amplifier



Dimensions (WxHxD): 1.4" x 6.2" x 2.8" Wt: 0.7 lbs

Accessories: 1008140170 TA-17, 1008140160 TA-16

1008131020

TKIS-2 VoIP Intercom Module

- DIN-rail mountable, clips included
- Add VoIP/CCoIP to your parking solution, cash point, vending machine, and more
- Build your own IP Intercom station or help point
- Make your own 10W IP Speaker
- Control relay and I/Os over IP
- Supports ICX-AlphaCom, IC-EDGE, and SIP (for use with any IPBX)
- Supports a wide set of IP networking standards
- Remote software upgrade, configuration and monitoring
- ONVIF Compatible
- Powered from the IP network cable using Power over Ethernet (PoE)
- Advanced audio technology: automatic gain and volume adjustment, background noise cancellation, open duplex, etc.



Dimensions (WxHxD): 4.6" x 2.8" x 1.3" Wt: 0.2 lbs

Accessories: 1008140170 TA-17 electret mic

1008132020

TKIE-2 Turbine IP Station Kit

- IP station kit with extended functionality
- Dual RJ45 for Ethernet connectivity (with switch)
- Dual relays (DPDT)
- 6 configurable I/Os (input, output or LED-driving)
- Line-in/Line-out connectivity for connection to audio devices
- Header for connecting audio accessories
- Connects to high-power relay module (TA-10)
- High-quality, Turbine class output with 10W amplifier
- ONVIF Compatible
- Full open duplex and digital noise reduction
- Metal enclosure suitable for DIN-rail mounting



Dimensions (WxHxD): 4.2" x 2.9" x 1.2" Wt: 0.2 lbs

Accessories: 1008140170 TA-17 electret mic

1008331010

TKIV+ Turbine Video & VoIP Intercom Module

- Build your own IP Intercom video station or Help-Point
- Add VoIP and video to your parking solution, cash point, vending machine, and more
- Advanced audio technology like automatic gain and volume adjustment, background noise cancellation, open duplex, etc.
- HD Video at up to 30 FPS in 1440x1080p
- Wide-angle lens
- ONVIF Conformant
- MJPEG and H.264
- Control relay and I/Os over IP
- Supports ICX-AlphaCom, IC-EDGE, and SIP
- Supports a wide set of IP networking standards
- Remote SW upgrade, configuration & monitoring
- Powered from the IP network cable using Power over Ethernet (PoE and PoE+)



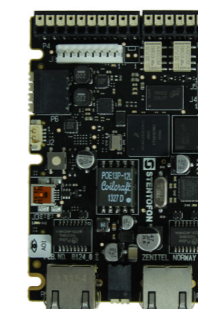
Size CPU Module (HxWxD): 2.7" x 3.4" x 1.8"

Size Camera Module (HxWxD): 2.1" x 2.6" x 0.7"

1008132010 / 1008132035

TKIE-1/TKIE-3-CC Turbine Kit

- IP station kit with extended functionality
- Dual RJ45 for Ethernet connectivity (with switch)
- Dual relays (DPDT)
- 6 configurable I/Os (input, output or LED-driving)
- Line-in/Line-out connectivity for connection to audio devices
- Header for connecting audio accessories
- Option to connect high-power relay module TA-10
- High-quality Turbine class output with 10W amplifier
- Full open duplex and digital noise reduction
- TKIE-3 comes with 5x5 keyscan matrix



Dimensions (WxHxD): 4" x 2.6" x 1" Wt: 0.2 lbs

Accessories: 1008140100 TA-10 Relay Module

1007102000

Substation Kit (Analog)

- Complete kit for making a customized substation for AlphaCom
- Connects to an ASLT port
- Vandal resistant call button
- Superb audio quality (10 kHz)
- External or extra call button option
- Includes the 1307 substation board, 45 Ohm weather resistant loudspeaker, electret microphone with mounting material, one tamper-proof button and all other necessary station accessories



Size printcard (WxHxD): 3.5" x 1" x 2.8" Wt: 1.1 lbs



IP Speakers with Microphones

1023300011

ELSIR-10CM IP Ceiling Speaker with Microphone

- Steel fire dome
- 10W Class D, built-in amplifier
- 96 dB SPL (1m)
- Built-in Microphone
- Ideal for Micro Zone PA and systems that require a limited number of speakers
- Each speaker is individually addressable and monitored
- Ideal for speakers installed in remote locations, e.g. roads and railways
- Remote software upgrade and configuration
- ONVIF Compatible
- Relay output for remote control, e.g. doors, signal lamps, gates
- Powered from the IP network cable using Power over Ethernet (PoE)
- Ideal for Building Security, Infrastructure, and Industrial projects



Dimensions (Diameter x Depth): 7.8" x 4.4" Wt: 3.1 lbs

1023302330

ELSII-10WM IP Cabinet Speaker with Microphone

- 10W Class D, built-in amplifier
- Dust and water tight – IP66
- 95 dB SPL (1m)
- Built-in Microphone
- Ideal for Micro Zone PA and systems that require a limited number of speakers
- Each speaker is individually addressable and monitored
- Ideal for speakers installed in remote locations, e.g. roads and railways
- Remote software upgrade and configuration
- ONVIF Compatible
- Relay output for remote control, e.g. doors, signal lamps, gates
- Powered from the IP network cable using Power over Ethernet (PoE)
- Ideal for Building Security, Infrastructure, and Industrial projects



Dimensions (WxHxD): 6.3" x 10" x 7.4" Wt: 4.6 lbs

Related item: 1023303010 EMCG-1 Cable Gland Microphone

1023301321

ELSII-10LHM IP Long Horn Speaker with Microphone

- 10W Class D, built-in amplifier
- Dust and water tight – IP66
- 120 dB SPL (1m)
- Built-in Omni-directional Microphone
- Ideal for Micro Zone PA and systems that require a limited number of speakers
- Each speaker is individually addressable and monitored
- Ideal for speakers installed in remote locations, e.g. roads and railways
- Remote software upgrade and configuration
- ONVIF Compatible
- Relay output for remote control, e.g. doors, signal lamps, gates
- Powered from the IP network cable using Power over Ethernet (PoE)
- Ideal for Building Security, Infrastructure, and Industrial projects



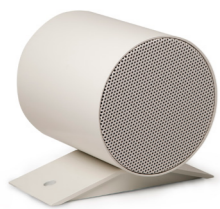
Dimensions (WxHxD): 7.9" x 10.8" x 13.7" Wt: 4.2 lbs

Related item: 1023303010 EMCG-1 Cable Gland Microphone

1023302340

ELSII-10PM IP Projector Speaker with Microphone

- 10W Class D, built-in amplifier
- Dust and water tight – IP65
- 97 dB SPL (1m)
- Built-in Microphone
- Ideal for Micro Zone PA and systems that require a limited number of speakers
- Each speaker is individually addressable and monitored
- Ideal for speakers installed in remote locations, e.g. roads and railways
- Remote software upgrade and configuration
- ONVIF Compatible
- Relay output for remote control, e.g. doors, signal lamps, gates
- Powered from the IP network cable using Power over Ethernet (PoE)
- Ideal for Building Security, Infrastructure and Industrial projects



Dimensions (WxHxD): 7" x 7.9" x 6.3" Wt: 5.1 lbs

Related item: 1023303010 EMCG-1 Cable Gland Microphone

1023301311

ELSII-10HM IP Horn Speaker with Microphone

- 10W Class D, built-in amplifier
- Dust and water tight – IP66
- 116 dB SPL (1m)
- Built-in Microphone
- Ideal for Micro Zone PA and systems that require a limited number of speakers
- Each speaker is individually addressable and monitored
- Ideal for speakers installed in remote locations, e.g. roads and railways
- Remote software upgrade and configuration
- ONVIF Compatible
- Relay output for remote control, e.g. doors, signal lamps, gates
- Powered from the IP network cable using Power over Ethernet (PoE)
- Ideal for Building Security, Infrastructure, and Industrial projects



Dimensions (WxHxD): 7.3" x 5.7" x 8.2" Wt: 3.7 lbs

Related item: 1023303010 EMCG-1 Cable Gland Microphone

Emergency Stanchions and Wall Units



2809016004

Emergency Communication Tower / Stanchion 1600-04

- Economical and reliable emergency communications
- Extremely durable design resists environment and vandalism
- LED blue light flashes when unit is activated - LED blue light is constantly on
- Camera mount provides high vantage point for surveillance cameras
- Easy to install and versatile
- Unit meets all ADA requirements
- Design can be customized to meet customer requirements (color and lettering)
- CCTV arm for holding of dome camera (not included)
- Voltage Options - 120 VAC, 12/24 VDC & 24 VAC



Dimensions (WxHxD): 1' x 11.9' x 10" Wt: 395 lbs

2809016000

Emergency Communication Tower / Stanchion 1600 Deluxe

- Economical & reliable emergency communications
- Extremely durable design - Weather, Environment, and Vandal Resistant
- LED blue light flashes when unit is activated - LED blue light is constantly on
- Easy to install, versatile modular design
- Unit meets all ADA requirements
- Design can be customized to meet customer requirements
- Available painted in colors Blue, Red and Yellow (stainless steel version shown)
- Voltage Options - 120 VAC, 12/24 VDC & 24 VAC



Dimensions: (WxHxD): 1' x 9' x 10" Wt: 340 lbs

2809016002

Emergency Stanchion 1600 with Mass Notification

- Integrated emergency and wide-area emergency broadcast system
- Concealed high-power speakers provide 360° coverage
- LED blue light mounted atop the tower: LED blue light is continuously lit; light is activated by EMERGENCY button when call is placed or by command of remote guard calling into the emergency phone
- Faceplate is continuously lit by ultra bright, LED front panel
- A variety of lettering, signage, and color choices are available
- Amplifier and speakers mount inside the tower
- Station must be equipped with a PA interface adapter board to use internal PA amplifier and speakers
- Voltage Options - 120 VAC, 12/24 VDC & 24 VAC



Dimensions (WxHxD): 12.75" x 10.3' x 11" Wt: 430 lbs

2809016006

Emergency Stanchion 1600-04 with Mass Notification

- Integrated emergency and wide-area emergency broadcast system
- Concealed, high-power speakers provide 360° coverage
- LED blue light strobe mounted atop the tower: LED light is continuously lit; light is activated by EMERGENCY button when call is placed or by command of remote guard calling into the emergency phone
- Faceplate is continuously lit by ultra-bright LED front panel
- A variety of lettering, signage, and color choices are available
- Amplifier and speakers mount inside the tower
- Station must be equipped with PA interface adapter board to use internal amplifier and speakers
- CCTV Camera and dome provided by others
- Voltage Options - 120 VAC, 12/24 VDC & 24 VAC



Dimensions (WxHxD): 12" x 11.94' x 10" Wt: 485 lbs

2809016080

Emergency Communication Tower / Stanchion 1608 Eco

- Economical and reliable emergency communications
- Lightweight aluminum construction, which allows for one person installation
- LED Blue Light flashes when unit is activated - LED Blue Light is constantly on
- Modular construction allows for easy upgrades
- Intercom station is illuminated at all times by LED panel light
- Vandal resistant and designed to resist extreme weather conditions
- ADA compliant
- Voltage Options - 120 VAC, 12/24 VDC & 24 VAC



Dimensions (WxHxD): 10" x 9.4' x 6.8" Wt: 45 lbs

2809016010

Emergency Communication Tower / Stanchion 1601 Econo

- Economical and reliable emergency communications
- Extremely durable design resists environment and vandalism
- LED Blue light flashes when unit is activated - LED Blue Light is constantly on
- Easy to install, versatile, modular design
- Units meet all ADA requirements
- Design can be customized to meet customer requirements (color and lettering)
- Voltage Options - 120 VAC, 12/24 VDC & 24 VAC
- Note: All IP Turbine Intercoms Require IP station license



Dimensions: (WxHxD): 10" x 9.6' x 8" Wt: 300 lbs

2809016040

Emergency Communication Tower / Stanchion 1604

- Economical and reliable emergency communications
- Extremely durable design - Resists environment and vandalism
- LED Blue Light flashes when unit is activated - LED Blue Light is constantly on
- Easy to install, versatile, modular design
- Units meet all ADA requirements
- Design can be customized to meet customer requirements (color and lettering)
- Voltage Options - 120 VAC, 12/24 VDC & 24 VAC



Dimensions: (WxHxD): 10" x 6' x 6.8" Wt: 185 lbs

2809016030

Emergency Communication Wall Unit 1603 Economy

- Economical and reliable emergency communications
- Extremely durable design - weather, environment, and vandal resistant
- LED Blue Light flashes when unit is activated - LED Blue Light is constantly on
- Easy to install, versatile, modular design
- Units meet all ADA requirements
- Design can be customized to meet customer requirements
- Available painted in colors Blue, Red, and Yellow (stainless steel version shown)
- Voltage Options - 120 VAC, 12/24 VDC & 24 VAC



Dimensions: (WxHxD): 10" x 32" x 8" Wt: 41 lbs

Note: Slim version available 2809016039

2809016020

Emergency Communication Wall Unit 1602 Deluxe

- Economical and reliable emergency communications
- Extremely durable design resists environment and vandalism
- LED Blue Light flashes when unit is activated - LED Blue Light is constantly on
- Easy to install, versatile, modular design
- Unit Meets all ADA requirements
- Design can be customized to meet customer requirements
- Available painted in colors Blue, Red, and Yellow (stainless steel version shown)
- Voltage Options - 120 VAC, 12/24 VDC & 24 VAC



Dimensions: (WxHxD): 10.5" x 32" x 8" Wt: 41 lbs

Note: Slim version available 2809016029

2809016028

Emergency Communication Wall Unit 1602 Deluxe Slim

- Station mounting is specific for Zenitel Turbine stations
- LED Blue Light flashes when unit is activated - LED Blue Light is constantly on
- Emergency Phone faceplate is illuminated at all times by an LED Panel Light
- Vandal-resistant, marine grade, 316 stainless steel construction
- Designed to resist extreme weather conditions
- A variety of signage, graphics, and color choices are available
- ADA-compliant



Dimensions: (WxHxD): 10" x 32" x 4" Wt: 23 lbs

2809016038

Emergency Communication Wall Unit 1603 Economy Slim

- Station mounting is specific for Zenitel Turbine stations
- LED Blue Light flashes when unit is activated - LED Blue Light is constantly on
- Emergency Phone faceplate is illuminated at all times by an LED Panel Light
- Vandal-resistant, marine grade, 316 stainless steel construction
- Designed to resist extreme weather conditions
- A variety of signage, graphics, and color choices are available
- ADA-compliant



Dimensions: (WxHxD): 10" x 32" x 4" Wt: 23 lbs



ICX-AlphaCom Platform

1002000110

ICX-510-IA Intelligent Communication Gateway

- Made to provide critical communication in any environment
- Supports 552 IP stations
- Environmentally friendly and energy saving - max. 15 W
- Global networking and integration
- Dual software images for system robustness and low downtime during software upgrades
- Secure boot, hardware Root of Trust - RoT
- SD Card based software recovery
- Fully compatible with legacy AlphaCom system
- Large memory supports future feature expansion and new services
- Memory extension via SD card and USB
- High-quality, professional PA broadcasting and messaging services
- Security voice guidance for public safety and building security
- Auto-attendant functionality (Automatic voice supported switchboard)
- Voice supported call guidance
- Slim and compact
- 1U rack integration
- Fanless design
- Robust, powder-painted, die-cast aluminium housing
- Vibration proof
- Closed ingress protected housing
- Flexible mounting system



Dimensions (WxHxD): 6.38" x 1.75" x 7.87" Wt: 2.2 lbs

Software: ICX-AlphaCom Core

1002500020

IPS-AC1 PSU for ICX-510

- DIN-Rail mounting
- Ultra slim design with 35 mm (2SU width)
- Input 85-264 VAC, Output 48VDC
- No load power consumption <<0.3W
- Isolation class II
- Pass LPS (Limited Power Source)
- Protections: Short circuit / Overload / Over voltage
- Over voltage category III
- LED indicator for power on

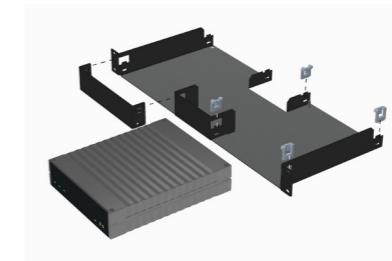


Dimensions (WxHxD): 1.4" x 3.5" x 2.2" Wt: 0.3 lbs

1002500010

IA-RS1 Mounting Bracket for ICX-510

- Using the IA-RS1 Rack Shelf, two ICX-510 units can be mounted side by side in a 19" 1HU rack space.

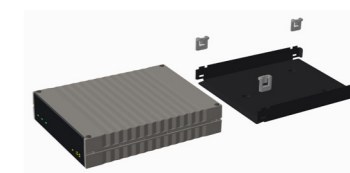


Dimensions (WxHxD): 19" x 1.7" x 8" Wt: 1.1 lbs

1002500020

IA-MB1 Mounting Bracket for ICX-510

- The ICX-510 unit slides into the IA-MB1 Mounting Bracket in 4 possible orientations.
- To fix the bracket to a wall or shelf, use flat head washer screws with a maximum head height of 3 mm.

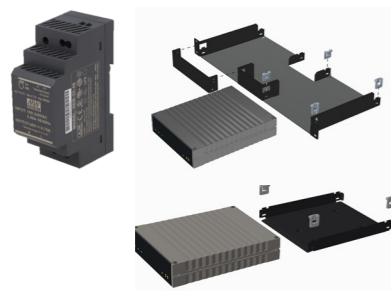


Dimensions (WxHxD): 8" x 6.7" x 1.1" Wt: 0.9 lbs

555-ICX510PKG

ICX-510-IA Intelligent Communication Gateway Package

- Package includes the ICX-510 gateway, power supply, and rack/shelf bracket



Package: 1002000100 ICX-510 Intelligent Communication Gateway, 1002500020 IPS-AC1 PSU for ICX-510, 1002500010 IA-RS1 Mounting Bracket for ICX-510 or IA-MB1 Mounting Bracket for ICX-510

ICX-AlphaCom Licenses

These are the licenses for running ICX-AlphaCom Core on the ICX-510 Intelligent Communication Gateway. All licenses can be stacked.



1002600000

ICX-AlphaCom Core License

1002600100

ILS-IC IP Station License

1002600200

ILS-CRM IP-station license, CRM

1002600300

ILS-SC IP-station license, softclient

1002600700

ILS-SIP SIP Station License

1002602101/1002602102/1002602103

ILI-SIP2/4/8 SIP Trunking, 2/4/8 Lines

1002602001/1002602003

ILI-AN2/ILI-AN8 AlphaNet, 2/8 Lines

1002602201/3/4/5

ILI-REC2/8/16/32 Active Recording Interface, 2/8/16/32 Users

1002602306/1002602309

ILI-API64/ILI-API512 API for 64/512 Stations

1002602400

ILI-IF Interface License, Enabling all interfaces except those on ports 61112/61113

1002604000

ILF-M-BAS Basic Audio Messaging License

1002604100

ILF-M-ENH Enhanced Audio Messaging License

1002604200

ILF-M-EXT Enhanced Audio Message with Extended Storage - 1 server

1002604500

ILF-HBA High bandwidth audio license

1002606006

ILR-U64 Redundancy License 64 Users

1002606008

ILR-U256 Redundancy License 256 Users

1002606009

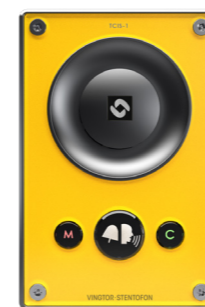
ILR-U512 Redundancy License 512 Users

Analog Intercom Stations

Analog Stations only work with AlphaCom

1008114010 TCAS-1

- Analog MEMS microphone
- Unique, 3D speaker grille design
- Dirt, dust, and water resistant - rating IP-66
- Built to last with robust, die cast aluminium frame - rating IK 08
- Yellow thermoplastic front plate with one button plus M and C
- Ideal for Industrial applications



Dimensions (WxHxD): 4.7" x 7.1" x 0.9" Wt: 2.2 lbs

Accessories: 1008140010 TA-1 Turbine Compact On Wall Box, 1008140030 TA-3 Turbine Compact Flush Back Box, 1008140140 TA-14 Microphone Windscreen for TCIS/TCIV

1007042000 Wall Master Station with Display

- Fully equipped analog master station with free access to all extensions and features
- 8 freely programmable single touch keys (DAK)
- 2 x 16 character alphanumeric display
- Private/Open switch
- Red "microphone live" lamp
- Built-in 63 Ohm 1W loudspeaker
- Adjustable loudspeaker volume



Dimensions (WxHxD): 4.9" x 11" x 2.1 Wt: 1.8 lbs

Accessories: Requires 1000602000 Flush Mount Back Box or 1000603000 On Wall Back Box

1008114020 TCAS-2

- Analog MEMS microphone
- Unique, 3D speaker grille design
- Dirt, dust, and water resistant - rating IP-66
- Built to last with robust, die cast aluminium frame - rating IK 10
- Stainless steel front plate with one button
- Ideal for Building Security and Public Environments



Dimensions (WxHxD): 4.7" x 7.1" x 0.9" Wt: 2.2 lbs

Accessories: 1008140010 TA-1 Turbine Compact On Wall Box, 1008140030 TA-3 Turbine Compact Flush Back Box, 1008140140 TA-14 Microphone Windscreen for TCIS/TCIV

1007040000 Wall Master Station, Standard

- Fully equipped analog master station with free access to all extensions and features
- Private/Open switch
- Built-in 63 Ohm/1W loudspeaker
- Adjustable loudspeaker volume
- Excellent sound quality



Dimensions (WxHxD): 4.9" x 11" x 2.1 Wt: 1.3 lbs

Accessories: Requires 1000602000 Flush Mount Back Box or 1000603000 On Wall Back Box

1008114030 TCAS-3

- Analog MEMS microphone
- Unique, 3D speaker grille design
- Dirt, dust, and water resistant - rating IP-66
- Built to last with robust, die cast aluminium frame - rating IK 08
- Black thermoplastic front plate with one button
- Ideal for Building Security and Public Environments



Dimensions (WxHxD): 4.7" x 7.1" x 0.9" Wt: 2.2 lbs

Accessories: 1008140010 TA-1 Turbine Compact On Wall Box, 1008140030 TA-3 Turbine Compact Flush Back Box, 1008140140 TA-14 Microphone Windscreen for TCIS/TCIV

1007007000 Dual Display Station

- Desktop master station with optional gooseneck microphone module
- Up to 90 freely programmable direct access keys (DAK) on nine pages with information text for each key on the display
- Four navigation keys for quick access to system menus and directory entries
- Status information, guidance, and menus are shown on a large, 4-line graphic display
- Requires separately ordered station cable



Dimensions (WxHxD): 2.8" x 5.5" x 10.6" Wt: 0.9 lbs

Accessories: 1009800130/115 Station Cable with RJ45 connector, 1007007010 Microphone for Dual Display Station

2213000300
VAF-1 Analog Flush Telephone with Relay Output

- Console telephone
- Supports DTMF
- Double ringing tone selection for dual telephones in same area
- Solid construction
- Adjustable backlight
- Volume control
- Relay output


Dimensions (WxHxD): 6.7" x 11" x 3.3" Wt: 1.3 lbs
1007056100
Vandal Resistant Substation

- Made for critical communication
- Vandal resistant
- Design in stainless steel (A304) to withstand corrosion
- Vandal resistant call button
- Superb audio quality (10 kHz)
- Advanced supervision functions
- External or extra call button option


Dimensions (WxHxD): 3.6" x 7.1" x 1" Wt: 1.8 lbs

Accessories: 1008098100 Flush Mount Back Box, 1008098000 On Wall Back Box, 1008098001 On Wall Back Box

1007086000
Industrial Master Station

- Master station with free access to all extensions and features
- Rugged waterproof and dustproof casing in orange aluminum alloy
- Microphone along with red microphone live lamp
- External loudspeaker. Sound level adjustable with a potentiometer inside the station
- Built-in 10 W (8 ohm) VOX operated power amplifier or external loudspeaker
- Screw terminals for easy connection of installation cables
- Equipped with 4 direct access keys


Dimensions (WxHxD): 6.3" x 10.2" x 3.9" Wt: 2.4 lbs
2213000200
KNSP-01 Heavy Duty Analog Telephone with Door

- 5mm aluminum casing
- External ringer unit recommended such as HB-90, HB-105 or CRB-7 with signal light
- Door has smart stay-open or stay-shut mechanism
- Wall mounting plate included
- Magnetic reed hook-switch gives minimal wear and tear
- Powered by phone line


Dimensions (WxHxD): 8.1" x 12.6" x 5.5" Wt: 11.9 lbs
2213000100
KNSP-09 Heavy Duty Analog Telephone

- Made for industrial environment
- 5mm aluminum casing
- External ringer unit recommended such as HB-90, HB-105 or CRB-7 with signal light
- Powered by phone line
- Full phone keypad plus special function keys
- Wall mounting plate included
- Magnetic reed hook-switch gives minimal wear and tear


Dimensions (WxHxD): 8.1" x 12.6" x 4.7" Wt: 11 lbs


- 1191101000**
Vingtor-Stentofon Operator Basic License
- 1191101010**
Vingtor-Stentofon Operator Enhanced License

AlphaPro

AlphaPro is the tool for configuring the ICX-AlphaCom system. It is self-contained, simple to install, and easy to use. When a new server is to be configured, the server is given a working default factory setting.

The operator can then modify the settings such as:

- Directory (type of station, line interface, display name and more)
- Define groups (cell groups, guard groups)
- Interface to CCTV, PA, Paging, DECT
- AlphaNet
- Other custom behavior

There are currently more than 100 defined features that can be programmed with AlphaPro. As AlphaPro is an off-line tool, it is possible to enter all parameters without being connected to the server. Once all parameters are entered, AlphaPro can be connected to the server and the parameters can be sent. AlphaPro can also upload configuration information from a server.

- AlphaPro connects to a server via the IP network or a local RS232 interface
- AlphaPro E7 runs without a hardware key. It gives access to all features except AlphaNet, but only for 36 subscribers.

AlphaPro Professional uses the Professional hardware key. It provides access to all features for all stations. This version must be used when extensive changes to the autoloader are required.

- 1009291120**
AlphaPro Professional, USB dongle

Vingtor-Stentofon Operator

Vingtor-Stentofon Operator is a PC-based system management application package for the ICX-AlphaCom platform. It shows the status of intercom devices by way of maps and makes it easy for operators to:

- View calls and call requests
- Act easily and quickly on events and requests
- Store an on-screen history of events through a Journal

The application is primarily intended for use in a control room environment. It provides a clear overview for operators with multiple layout possibilities according to the operator's preference. Layouts can be defined to cover single or multiple screens and can be added, edited and deleted by administrators.

Software Development Kit

The Software Development Kit (SDK) makes it easy for 3rd-party developers to make value-added applications for integration with the ICX-AlphaCom system. The SDK is based on Microsoft .NET technology. This gives the 3rd-party developer access to a wide set of software components as well as an extensive Microsoft .NET development environment and tool set. Some examples of applications that can be made using the SDK:

- Integrated control room panel on a touch-screen for public address, radio, and intercom

- Interactive intercom icons on a map with ability to call, broadcast public address, and listen in
- Integration with video analytics to provide voice response if someone is trespassing
- Integration with CCTV, where a camera is switched on with Voice Activity Detection
- PC-based Call Handler with graphical user interface for control rooms and guards

To further support 3rd-party developers, help files, a quick start manual, Wiki pages, and example applications, including source code are available to get you quickly up to speed with writing value-added applications for the ICX-AlphaCom system.

To get access to the SDK, please visit: www.zenitel.com/sdk-alpha.com

The SDK consists of a number of assemblies (DLLs) that can be easily integrated with software written in C#.

OPC

OPC provided easy and fast integration based on standard OPC technology. The OPC license is installed on the ICX-AlphaCom platform.

The ICX-AlphaCom OPC Server implements the following OPC standards:

- OPC Data Access (OPC DA V2/V3)
- OPC Alarm & Events (OPC AE V1.1)
- OPC Unified Architecture (OPC UA)

Audio Messaging

With Audio Messaging you can store and play audio messages directly from your PC or intercom station, and the messages are safely stored in the flash memory of the ICX-AlphaCom system. Audio Messaging supports a wide set of applications including auto-attendant, PA broadcasting, voice response and voice driven menus. It is easy to initiate audio messages from 3rd party systems using OPC, SDK or Data Protocol. Make live PA and group call broadcasts with recall for handling feedback and verifying messages. Schedule PA and group broadcasts for specific events and set up an auto-attendant with voice guided menus for handling incoming calls. You can also set up a voice response for call request waiting messages and absence messages. The feature set of the license is compatible with that of the ASVP card, but offers some additional functions.

VS Recorder

- ICX-AlphaCom Call Recording
- Audio and Video Stream Recording

The VS Recorder software is a fully-featured IP based audio recorder with additional support for video recording. The solution is able to record calls from all types of terminals connected to ICX-AlphaCom: analog and IP intercoms, analog and IP phones. The Recorder is also a NAVR – Network Audio/Video Recorder.

1190110100	VS Recorder – Base Module
1190110110	VS Recorder – Playback/Configuration Client
1190110120	VS Recorder – AlphaCom Recording Module
1190110121	VS Recorder – AlphaCom Recording Module, AddOn
1190110131	VS Recorder – Stream Recording Module, 1 stream
1190110138	VS Recorder – Stream Recording Module, 8 streams
1190110160	VS Recorder – API
1190110180	VS Recorder – Secure Audio Export

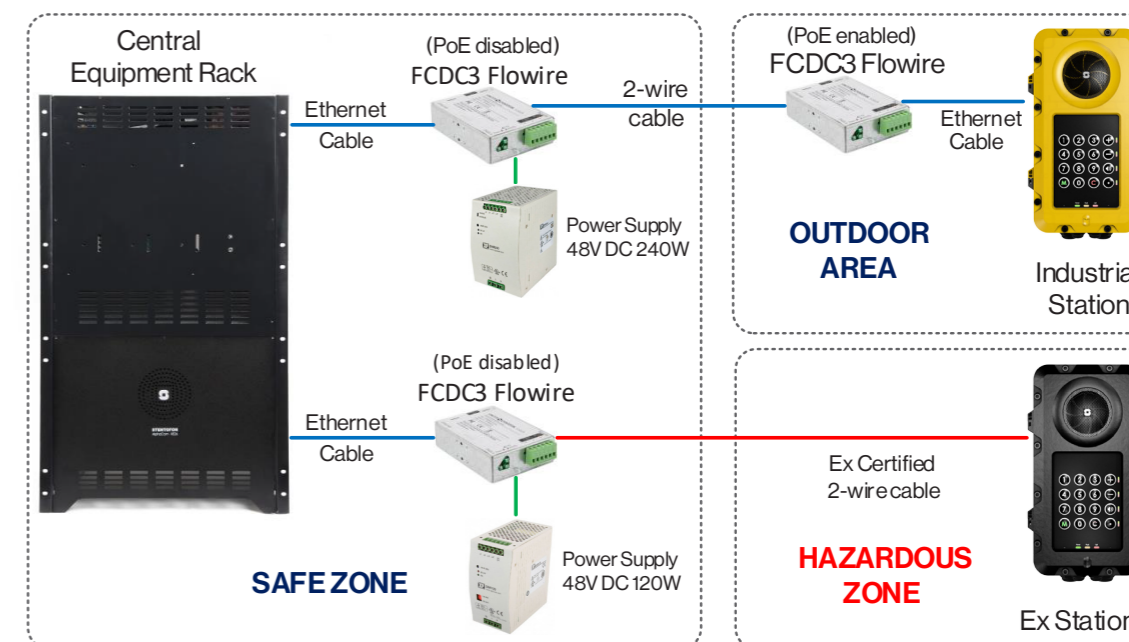
Flowire Converter

The Flowire Converter enables Ethernet to run on the same 2 wires as power, enabling simpler cabling and opens up for longer cable hauls.

Connection to Central Equipment Rack for Outdoor and Ex Intercom Stations

The intercom stations can use the 2-wire Flowire system for connection. Flowire is used to extend the Ethernet connection and support power distribution on the 2-wire cabling infrastructure.

The Ex station located in the hazardous zone is connected to the central equipment rack located in the safe zone using a 2-wire cable.



1008080310 FCDC3 Flowire Ethernet Converter

- One single pair of cable can be used to distribute power and data
- The cable hauls can be longer, up to 2 km, reducing the need for switches and/or repeaters
- Up to 10 Flowire devices can be connected to the same 2-wire cluster star topology
- Existing infrastructure can be used, even though only a single pair is available. This reduces the total cost of retrofit projects
- The Flowire converter can be used with any Ethernet enabled device (not limited to Zenitel products)
- Enable/Disable PoE switch
- Ingress Protection Rating: IP-20
- **Important:** 24-48V DC non-PoE Ex equipment



Dimensions (WxHxD): 4.4" x 2.9" x 1" Weight: 0.7 lbs

2990101120 XP Power Supply, 48V DC 120W

- Up to 90% Efficiency
- Wide Adjustment Range
- Parallel Function
- DC Standby Versions
- Full Power from -40 °C to +60 °C
- Convection-cooled with 25 mm free space all sides
- EN60950-1 UL508 UL60950-1,cUL60950-1 Pollution Degree 2
- CE Mark, UL60950-1 Overvoltage Category II, UL508 Overvoltage Category III



Dimensions (WxHxD): 2.5" x 4.9" x 4.6" Weight: 2 lbs

2990101240 XP Power Supply, 48V DC 240W

- Up to 90% Efficiency
- Wide Adjustment Range
- Parallel Function
- DC Standby Versions
- Full Power from -40 °C to +60 °C
- Convection-cooled with 25 mm free space all sides
- EN60950-1 UL508 UL60950-1,cUL60950-1 Pollution Degree 2
- CE Mark, UL60950-1 Overvoltage Category II, UL508 Overvoltage Category III



Dimensions (WxHxD): 3.3" x 4.9" x 4.4" Weight: 3 lbs

Licenses

IC-EDGE Licenses



1009661001

1x IC-EDGE Station License

1009661201

1x IC-EDGE SIP-Client Extensions

1009662001

IC-EDGE TelTrunk

AlphaCom XE Licenses

IP stations require a license. They do not require additional hardware such as an ASLT card. The maximum number of stations that is supported by AlphaCom XE Audio Servers is 552.

1009641001

IP station license for 1 station

1009641006

IP station license for 6 stations

1009648001

License for CRM-V DAK expansion

1009648011

STENTOFON SoftClient - 1 license

1009648012

STENTOFON SoftClient - 6 licenses

AlphaNet and multi-module linking for the AlphaCom XE Audio Servers can be via data networks. This does not require additional hardware inside the server, but opening up the capability requires the correct license. Licenses are required in all connected modules and nodes. There is no difference whether a license is used for an AlphaNet or a multi-module connection. A static license means that the destination of an audio link needs to be defined at commissioning, a dynamic link is a common resource, and can be used for any audio link that requires connection. The data links between modules and nodes are not licensed.

1009640002

AlphaNet and Multi-Module VoIP License for 2 Static Lines

1009640008

AlphaNet and Multi-Module VoIP License for 8 Dynamic Lines

1009640016

AlphaNet and Multi-Module VoIP License for 16 Dynamic Lines

1009640030

AlphaNet and Multi-Module VoIP License for 30 Dynamic Lines

1009640108

AlphaNet and Multi-Module VoIP License for 8 Dynamic Lines, upgrade from 2 lines

The multi-module license gives the possibility to expand the size of an Audio Server. It is possible to add up to 4 modules in a multi-module Audio Server. The modules will be linked together over a local area IP network (LAN). 30 VoIP channels are available in each server module. Note that the license is only required in the master module in the multi-module server.

1009640202

Multi-Module VoIP license - 2 Modules

1009640203

Multi-Module VoIP license - 3 Modules

1009640204

Multi-Module VoIP license - 4 Modules

1009640211

Multi-Module VoIP license, upgrade + 1 module

SIP Trunking gives the possibility to connect an AlphaCom XE to a telephone network, either directly to a SIP enabled telephone system or through a gateway to an analog or ISDN (BRI or PRI) system.

1009642001

SIP Trunking, 1 line

1009642002

SIP Trunking, 2 lines

1009642004

SIP Trunking, 4 lines

1009642104

SIP Trunking, 4 lines - upgrade from 2 lines

1009642008

SIP Trunking, 8 lines

1009642016

SIP Trunking, 16 lines

Each **SIP** telephone requires a SIP station license. SIP telephones can be physical units but also SIP softphone clients on a PC or PDA.

1009643001

SIP station license for 1 SIP telephone

1009643006

SIP station license for 6 SIP telephones

AlphaCom Mode Licenses for Exigo Amplifiers

Each amplifier channel consumes one license, but two channels can be combined into one on an amplifier to save on licensing.

1009648510

High Bandwidth Audio License

OPC Interface Licenses

1009649901

OPC interface supporting 40 stations

1009649902

OPC interface supporting 80 stations

1009649903

OPC interface supporting 160 stations

1009649904

OPC interface supporting 240 stations

1009649905

OPC interface supporting 320 stations

1009649906

OPC interface supporting 400 stations

1009649907

OPC interface supporting 552 stations

Audio Messaging Licenses

1009648500

Basic Audio Messaging License

License requires AMC IP v11 hardware. Includes Delayed PA broadcast using recall to prevent feedback problems, 1 auto-attendant message, 2MB memory storage for audio messages.

1009648501

Enhanced Audio Messaging License

License requires AMC IP v11 hardware. Includes Delayed PA broadcast using recall to prevent feedback problems, 3 auto-attendant messages, 10MB memory storage for audio messages, Full ASVP functionality.

1009648502

PA Recall License

License can be installed on both AMC IP v10 and v11 hardware. Includes Delayed PA broadcast using recall to prevent feedback problems.

Active Recording Interface Licenses

1009648092

Active recording interface - 2 users

1009648093

Active recording interface - 6 users

1009648094

Active recording interface - 12 users

1009648095

Active recording interface - 36 users

1009648096

Active recording interface - 72 users

1009648097

Active recording interface - 138 users

1009648098

Active recording interface - 276 users

1009648099

Active recording interface - 552 users



The Zenitel Channel Partner Program was designed to ensure that end users get the best possible solution to their need for intelligent audio communication.

Zenitel develops products and solutions that solve those needs and provides you with the training, sales, marketing and tools you need to be successful.

As a partner, your role is to source Zenitel products from your local Zenitel distributor and deliver the right solution to your customer.



Benefits for Zenitel Channel Partners

- Sales and marketing material
- Direct communication
- Tools
- Training
- Local experts
- Technical expertise
- Exclusive webinars, forums and events

Requirement for Zenitel Channel Partners

Market, sell and support Zenitel products and solutions.

Who can become a Zenitel Channel Partner?

The Zenitel Channel Partner Program is open to System Integrators, Installers and Resellers that offer security solutions to end customers. Please note that Zenitel will neither sell to nor provide pricing information to channel partners. Being a Zenitel channel partner will not provide any discount on products.

Go to zenitel.com/partners/channel-partner to apply!



Join the Zenitel eco-system of partners and offer your customers world-leading critical communication solutions.

ZENITEL AMERICAS SALES CONTACTS

ZENITEL USA, INC.

6119 E Connecticut Avenue-Kansas City, MO 64120
info.usa@zenitel.com (816) 231-7200 | www.zenitel.com

Dan Rothrock

President | dan.rothrock@zenitel.com | (816) 916-9899

Bruce Czerwinski

Vice President Sales & Business Development
bruce.czerwinski@zenitel.com | (425) 219-0907

Kelly Lake

Director of Global Strategic Alliances | kelly.lake@zenitel.com | (480) 330-9155

