



PRODUCT: EXIGO AMPLIFIERS



EXIGO AMPLIFIERS

- **Intelligent high-performance, IP-based amplifiers**
- **Efficient and compact - less space, less heat, less maintenance**
- **Scalable and flexible - over 10kW GA power in a single cabinet**

The EXIGO PA system is an advanced IP PA system, capable of delivering critical communication in demanding environments ranging from public areas, factory floors and passenger vessels to oil and gas installations. A key component of this is for the PA system to be scalable to any size, self-monitoring and flexible with modern configuration tools.

Vingtor-Stentofon EXIGO Amplifiers are a core part of this offering, with a proven record of delivering announcements, alarms and messages when it matters. Being efficient, having intelligent self-

monitoring capabilities of both internal and external electronics, and surviving high heat makes for a powerful combination.

Vingtor-Stentofon EXIGO Amplifiers are supported in both the EXIGO advanced IP PA system and in the Vingtor-Stentofon AlphaCom communication platform.



EXIGO
NATIVE IP PA/GA SYSTEM

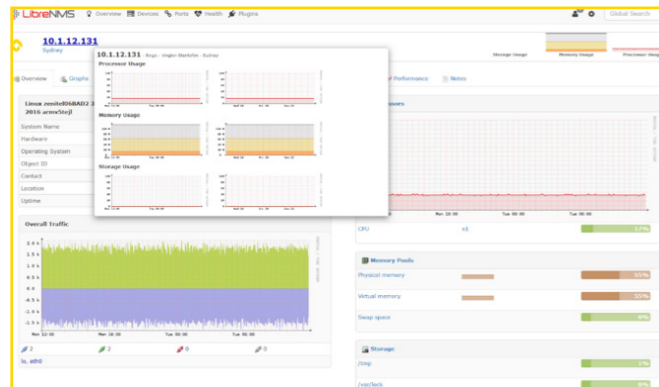
BECAUSE

when communication is critical

EXIGO NETWORKED AMPLIFIERS

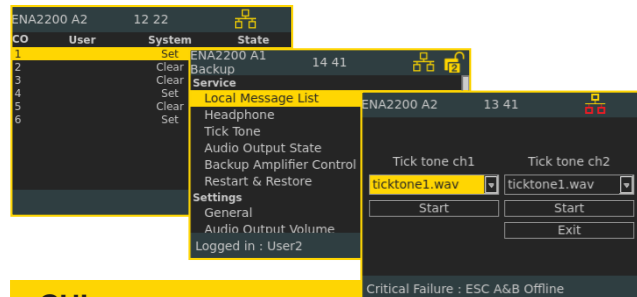
INTELLIGENT AMPLIFIERS

EXIGO Amplifiers are intelligent, self-monitoring IP amplifiers capable of being connected to EXIGO advanced IP PA systems or AlphaCom systems.



REMOTE MONITORING

Direct monitoring of EXIGO Amplifiers by external systems is possible utilizing SNMP.



GUI

The GUI allows operators to check the health and status of the amplifiers. Control outputs can be tested and per channel tick tones are available for testing speaker integrity.

CLASS D AMPLIFIERS

EXIGO amplifiers are class-D amplifiers capable of running full 1kHz at rated power for 30 minutes at 55 degrees. After 30 minutes the amplifier will reduce the volume to ensure continued operation.

SPEAKER LINE MONITORING

Speaker line monitoring is available for easy recognition of installation faults or sudden faults appearing during time of operation. Short cuts, load changes and ground faults can be detected.

FLEXIBLE

EXIGO Amplifiers have two audio channels that can either be part of the same zone or as two separate zones. Each channel can use 100V or 70V speaker technology.



INPUTS

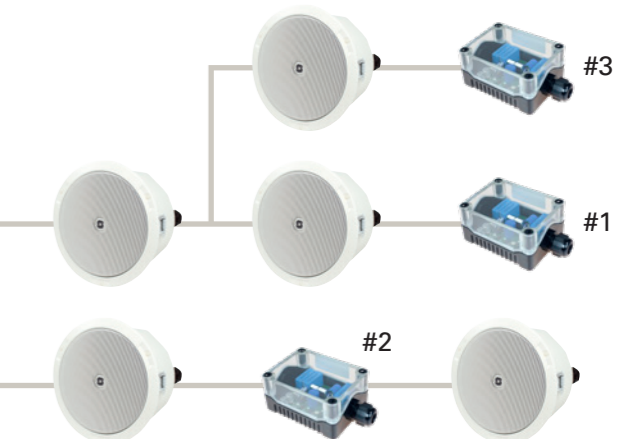
Each amplifier has multiple control inputs used for alarm initiation, message initiation or even for monitoring of external equipment for faults. Inputs are global and not limited to the amplifier itself. Inputs can be independently monitored for shorts or disconnections.

OUTPUTS

Each amplifier has a set of control outputs, and each output is capable of supplying 24Vdc in parallel with a relay. Outputs are global and not limited to the amplifier itself. Outputs are utilized in connection with i.e., speaker muting, flash-light control or third-party auxiliary connections for fault monitoring.

ADVANCED SPEAKER LINE MONITORING

Optional intelligent line end transponders can be used on the speaker lines to accurately locate faults. Line end transponders communicate with the amplifier continuously, and the amplifier will in case of faults report which transponder it has lost connection with.



EXIGO AMPLIFIERS



- 1023102100 ENA2100**
- 110-230Vac
 - 2 x 100W per ENA2100
 - 2 x ENA2100 in 2HU
 - Class-D technology
 - Fully monitored
 - 2 inputs, 2 outputs



- 1023102200 ENA2200**
- 24-48Vdc/110-230Vac
 - 2 x 200W in 2HU
 - Class-D technology
 - Fully monitored
 - Supports hot-standby backup amplifier
 - 6 inputs, 6 outputs



- 1023102400 ENA2400-DC**
- 48Vdc
 - 2 x 400W in 2HU
 - Class-D technology
 - Fully monitored
 - Supports hot-standby backup amplifier
 - 6 inputs, 6 outputs



- 1023102410 ENA2400-AC**
- 110-230Vac
 - 2 x 400W in 2HU
 - Class-D technology
 - Fully monitored
 - Supports hot-standby backup amplifier
 - 6 inputs, 6 outputs



- 1023540000 ELTSI**
- Intelligent Line Transponder for EXIGO amplifiers
 - Each amplifier can handle up to 10 amplifiers
 - Communication and power over speaker line
 - No extra wiring required
 - Accurately detect and locate faults



OTHER PRODUCTS



1023200030/1023200033
ECPIR-P/ECPIR-3P

- Microphone Call Panel
- Fully monitored
- AGC and Microphone monitoring
- Dual (A+B) function
- Power over Ethernet
- IP-66



1023201201/1023201206
EAPII-1/EAPII-6

- IP-66
- Supports optional handheld microphone
- 1 (6) programmable button(s)
- Ingress Protection rating: IP66
- Operating temp.: -40°C to +60°C



1023000100
ESC1

- System Controller
- Networked and monitored
- IP-based
- Programmable
- AB or hot-standby
- 6 inputs, 6 outputs
- Line output



1009608000
ALPHACOM XE7

- Audio Server with HD Voice
- Supports 552 IP stations and 36 analog intercom stations
- Global networking and integration
- IP, SIP and analog station support
- Extended software options
- SIM card based software configuration and disaster recovery

OUR SOLUTION:

- ◀ Engineered according to regulations and your needs.
- ◀ Flexible wiring and system allows for solving retrofits in an efficient manner.
- ◀ Self-monitored system, from microphones to speaker lines.
- ◀ Digital audio processing on all microphone access panels to handle any environment.
- ◀ Scalable and flexible solutions offering over 10kW power in a single rack or larger systems spread between multiple racks.
- ◀ Integration over IP to Intercom, Radio systems, Satcom, IP entertainment and more.
- ◀ Integration to legacy PBX systems using integration modules.
- ◀ Self-monitoring system with local reporting and option for remote monitoring over SNMP and Syslog.
- ◀ System status can be reported locally or optionally to remote systems over SNMP and Syslog.
- ◀ Range of rugged (IP66) panels for exposed areas with dedicated ATEX/IECEX access panels and accessories.

Want to know more?
[Try EXIGO Wiki](#)

It provides you with everything you need to know about the Vingt-Stentofon EXIGO PA/GA System.

