

1008140120

## TA-12

Turbine Mini On-Wall Backbox Black



- ✓ 16-gauge galvanized steel construction
- ✓ Black textured paint
- ✓ Convenient surface mounting
- ✓ Compatible with most standard 2-gang components, plates and covers
- ✓ Two 1/2-3/4" Concentric knockouts for conduit

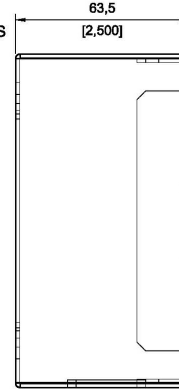
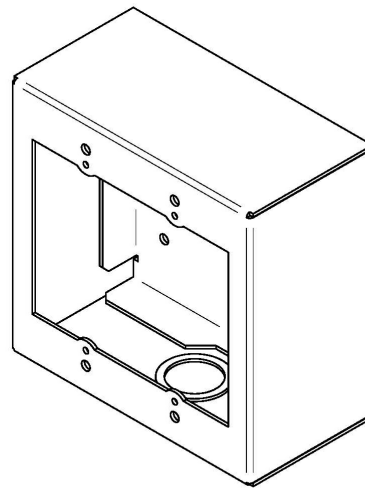
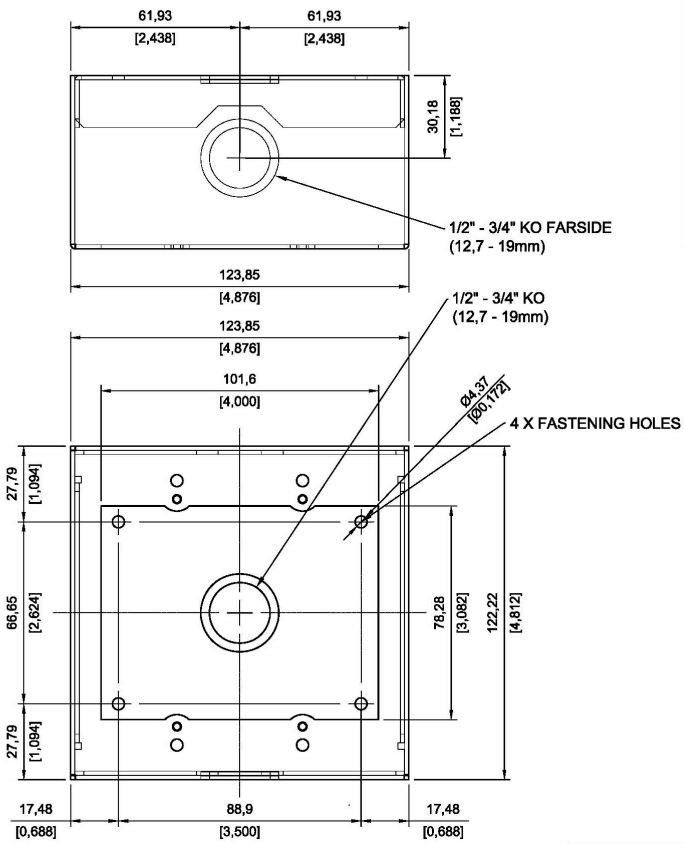
---

## Description

The TA-12 on-wall backbox are designed for surface mounting of standard wall plates. The backbox can be used to conveniently mount the Turbine Mini stations TMIS-1 and TMIS-2. Rugged construction make these boxes ideal for indoor commercial and industrial applications.

Mounting holes allow for fixed mounting on virtually any wall surface. The backbox model is available in textured black or white paint. Standard concentric knockouts facilitate convenient wiring and installation.

## Technical Dimensions



# Specifications

## MECHANICAL

Dimensions (WxHxD): 124 x 122 x 65 mm

Weight: 0.4 kg

## Used With



### TMIS-1 | Mini Audio Intercom

Mini IP and SIP Intercom

Item Number: 1008116010



### TMIS-2

Turbine Mini Intercom

Item Number: 1008116020