

1490001010

ITSV-1

IP Touch Station with Video This product has been replaced by 1490002010 ITSV-2



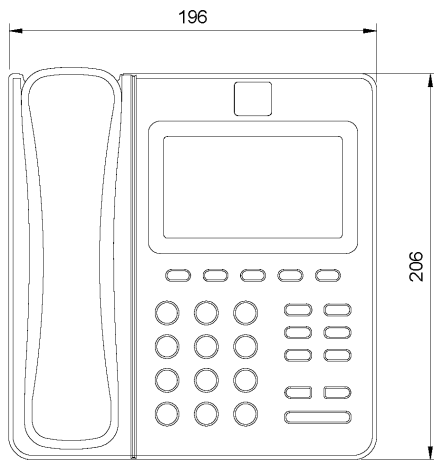
- ✓ Video desktop intercom supporting AlphaCom XE, SIP and IC-EDGE solutions
- ✓ Phonebook with up to 1000 contacts and call history with up to 1000 records
- ✓ Dual switched auto-sensing 10/100/1000Mbps network ports
- ✓ Wi-Fi (802.11b/g/n), PoE+, Bluetooth, USB, SD, HDMI, EHS with Plantronics headsets support
- ✓ 4.3" (480x272) capacitive (5 points) touch screen TFT LCD
- ✓ Megapixel CMOS sensor camera with privacy shutter
- ✓ HD wideband audio

Description

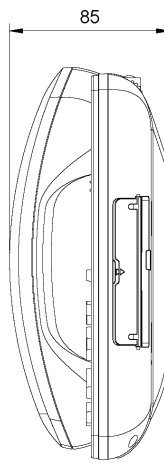
ITSV-1 represents the future in IP Intercom Services, featuring Android™ Operating System 4.2, a 4.3" (480x272) capacitive touch screen, a tiltable mega-pixel CMOS sensor, dual Gigabit network ports, integrated Wi-Fi, PoE and Bluetooth. The ITSV-1 delivers superior HD audio & video, leading edge SIP intercom features and integration with IC-EDGE and AlphaCom IP Intercom Platforms, developed by Zenitel. ITSV-1 redefines the desktop communication experience with a raised level of innovation and integration of state-of-art real time video conferencing, personalized rich media presentation & delivery. ITSV-1 is a full-duplex hands-free speakerphone with advanced acoustic echo cancellation and excellent double-talk performance.

Technical Dimensions

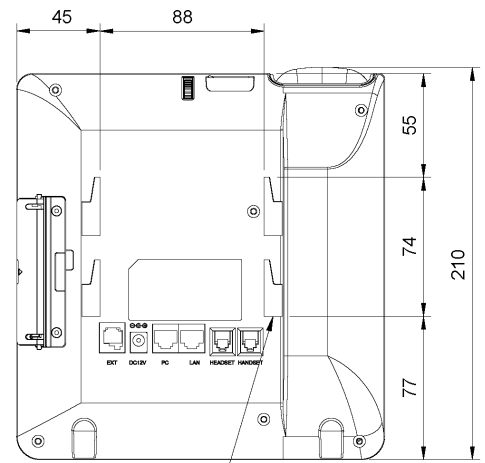
FRONT VIEW



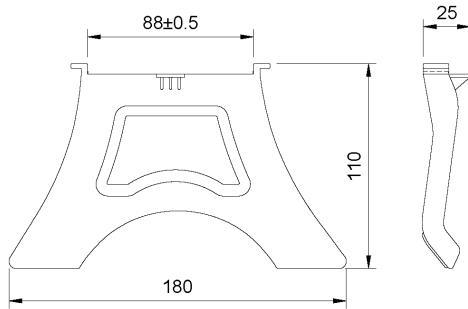
RIGHT VIEW



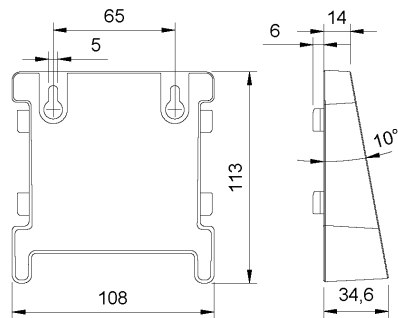
REAR VIEW



Phone Stand



Wall Mount bracket



Slots for the wall mount bracket
and phone stand

Specifications

GENERAL

| | |
|-----------------------------|--|
| Dimension (WxLxH) | 196.5mm (W) x 206.2mm (L) x 85.2mm (H) |
| Weight | 0.92kg |
| Graphic Display | 4.3" (480x272) capacitive (5 points) touch screen TFT LC |
| Camera | Tiltable mega pixel CMOS camera with privacy shutter |
| Video Codec | H.264, supports display of MJPEG streams |
| Video resolution | Up to 720p |
| Video frame rate | Up to 30 fps |
| Operating temperature range | 0°C to +40°C |
| Storage temperature range | -10°C to +60°C |
| Relative humidity | 10% - 90% non-condensing |
| Power options | Power over Ethernet (PoE) or power adapter. |
| Power over Ethernet | IEEE 802.3at, Class 4, Idle 3.8W, max. 9.7W |
| Power adapter | 12VDC, 1.5A, Idle 2.2W, max 7.6W |
| Network Interface | 2 x RJ45 (Ethernet) 10/100/1000 Mbps with integrated PoE |
| Bluetooth | Integrated, Bluetooth 4.0 + EDR |
| Wi-Fi | Integrated, 802.11 b/g/n |
| Security | MD5 and MD5-sess authentication, 256-bit AES encryption, TLS, SRTP, HTTPS, 802.1x media access control |
| SIP | RFC 3261, SIP Info (DTMF), RFC 2833 (DTMF) |
| IP protocols | IPv4 - IPv6 - TCP - UDP - HTTPS – TFTP - RTP - RTCP -DHCP - SIP |
| Audio technology | Wideband 200 Hz - 7 kHz (G.722), Telephony 3.4kHz (G.711), Narrowband (G.729) |
| Compliance | CE and FCC Part 15 |

Used With



TCIV-2

Vandal Resistant VoIP Video Intercom
This product has been replaced by
1008315020 TCIV-2+



TCIV-3

IP and SIP Video Intercom This product
has been replaced by 1008315030 TCIV-
3+



TCIV-6

IP and SIP Video Intercom This product
has been replaced by 1008315060 TCIV-
6+



IP Vandal Resistant Video Intercom Station w/ CP CAM Camera

CP CAM Camera



TCIV-5

IP and SIP Video Intercom This product
has been replaced by 1008315050 TCIV-
5+