



1008140180

## TA-18

### Turbine Compact Flush-Mount Back Box

- ✓ Back Box for flush mounting of all Turbine Compact Stations
- ✓ Makes the front faceplate of the station flush with the wall surface
- ✓ No screw holes, the backbox is simply glued or cast in place

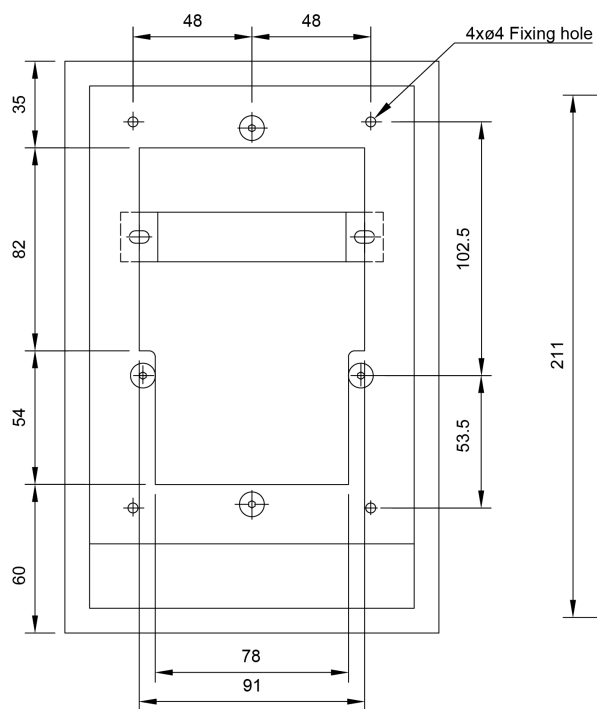
---

## Description

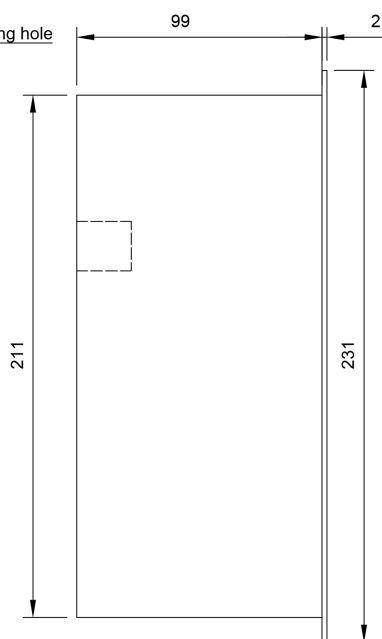
Flush mount backbox for Turbine Compact stations

## Technical Dimensions

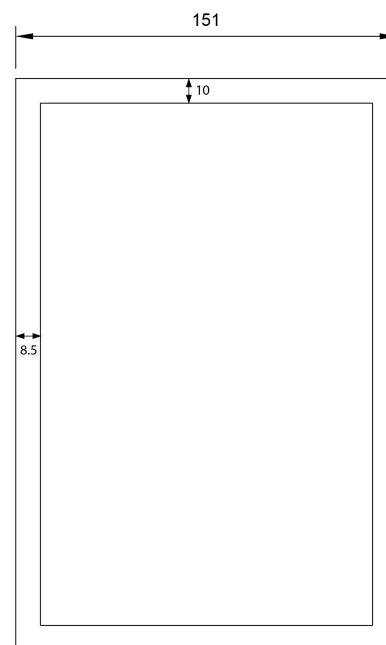
FRONT VIEW



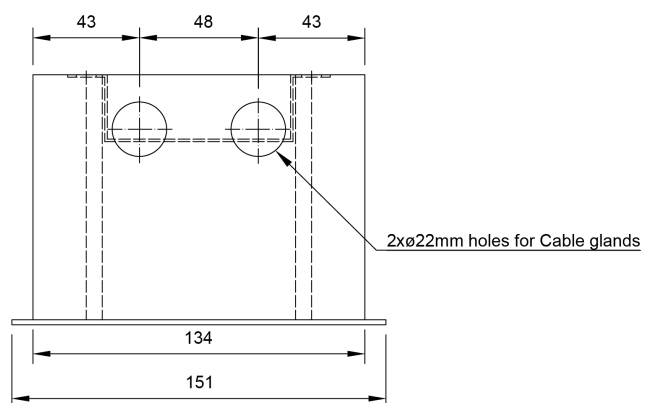
SIDE VIEW



REAR VIEW



BOTTOM VIEW



All dimensions in mm

# Specifications

Dimensions (WxHxD):	151 x 231 x 101 mm
Weight:	1.5 kg
Material:	Mild Steel Black Paint

## Used With



TCIS-1 | Audio Intercom

IP and SIP Intercom



TCIS-2 | Audio Intercom

IP and SIP Intercom



TCIS-3 | Audio Intercom

IP and SIP Intercom



TCIS-4 | Audio Intercom

IP and SIP Intercom



TCIS-5 | Audio Intercom

IP and SIP Intercom



TCIS-6 | Audio Intercom

IP and SIP Intercom



TCIA-2

Analog over IP Intercom



TCAS-1

Analog Intercom



### TCAS-2

Analog Intercom



### TCAS-3

Analog Intercom