

2310131026

MBX2MAA Communication box

EXPLOSION-PROOF COMMUNICATION BOX IN STAINLESS STEEL



- ✓ Certifications for use in Zones 1 and 2 IIC Group (Gas)
- ✓ Zones 21 and 22 IIIC Group (Dust)
- ✓ Ambient temperature up to +80°C (+176°F)
- ✓ AISI 316L stainless steel construction
- ✓ 3 RJ45 ports, Fast Ethernet (10BASE-T/100BASE-T)
- ✓ 1 SFP port, Fast Ethernet (100BASE-FX), for fiber optic connection
- ✓ 2 bypass for analog video signals with BNC connectors
- ✓ 2 bypass for I / O signals with multi-pin connectors
- ✓ Input voltages available: 230Vac, 120Vac, 24Vac
- ✓ Extended/Industrial range electronics
- ✓ Operating temperature: from -40°C (-40°F) up to +70°C (158°F)
- ✓ IP66, IP67, IP68, IP69

Description

MBX2MAA is a communication box designed to integrate seamlessly with one or more IP or analogue cameras from the Videotec MAXIMUS range. This device can connect a 24Vac-powered PTZ and its washing kit, or two fixed cameras equipped with washing kits.

MBX2MAA provides the devices that it connects to with a low-voltage local power supply. It also offers a Fast Ethernet connection thanks to the integrated Ethernet switch that is equipped with 3 RJ45 ports and an SFP port for fibre optic connection.

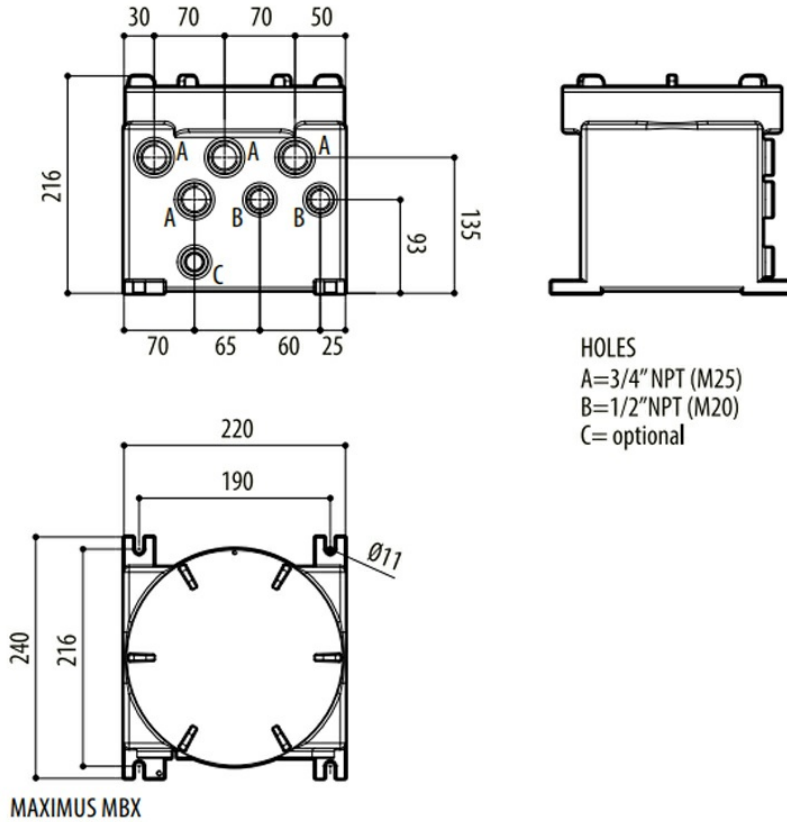
The SFP module can be chosen according to the requirements of the installation. It has been designed so that the inside gives easy access to cables, making connection effortless. The internal circuitry also makes it possible to bypass analogue video signals and all input/output connections available across the Videotec MAXIMUS range.

The robust AISI 316L stainless steel construction means maximum anti-corrosion properties for use in industrial and marine environments. Thanks to the integrated filter, any products connected to MBX comply with Lloyd's Register Marine Type Approval standards for electromagnetic (EMC) compatibility. MBX2MAA is the complete and competitive solution for professional installation of Videotec's MAXIMUS explosion-proof products.

Technical Dimensions

TECHNICAL DRAWINGS

The indicated measurements are expressed in millimetres.



Specifications

MAXIMUS MBX - CERTIFICATIONS AND MARKINGS				
Part number	Certification	Marking	Ambient temperature	Cable entry temperature
MBX**AA	ATEX	⊕ II 2 G Ex db IICT6...T5 Gb ⊕ II 2D Ex tb IIICT85°C...T100°C Db	-40°C ≤ Ta ≤ +60°C or +70°C	80°C
	IECEX	Ex db IICT6...T5 Gb Ex tb IIICT85°C...T100°C Db		
	INMETRO	Ex db IICT6...T5 Gb Ex tb IIICT85°C...T100°C Db		
	KCs	Ex d IICT6...T5 Ex tb IIICT85°C...T100°C		
	EAC Ex	1Ex d IICT6...T5 Gb X Ex tb IIICT85°C...T100°C Db X		
	UL Hazardous Location America	Class I, Zone 1, AEx db IICT6...T5 Gb Zone 21, AEx tb IIICT85°C...T100°C Db Class I, Div 2, Group A, B, C, D T6...T5 Class II, Div 2, Group F, G T6...T5	-40°C ≤ Ta ≤ +60°C or +70°C	80°C with Ta = 60°C max 90°C with Ta = 70°C max
	UL Hazardous Location Canada	Ex db IICT6...T5 Gb X Ex tb IIICT85°C...T100°C Db X Class I, Div 2, Group A, B, C, D T6...T5 Class II, Div 2, Group F, G T6...T5		
MBX**DA	ATEX	⊕ II 2G Ex db IICT4 Gb ⊕ II 2D Ex tb IIICT135°C Db	-40°C ≤ Ta ≤ +80°C	90°C
	IECEX	Ex db IICT4 Gb Ex tb IIICT135°C Db		
	INMETRO	Ex db IICT4 Gb Ex tb IIICT135°C Db		
	KCs	Ex d IICT4 Ex tb IIICT135°C		
	EAC Ex	1Ex d IICT4 Gb X Ex tb IIICT135°C Db X		

TECHNICAL DATA

MECHANICAL

AISI 316L stainless steel construction
Fastening slots: 4 x Ø11mm (0.43in)
Cable gland holes: 4 x 3/4" NPT + 2 x 1/2" NPT (on request: 4 x M25 + 2 x M20)
External dimensions (WxHxL): 220x216x240mm (8.7x8.5x9.4in)
Unit weight: 17.4kg (38.4lb)

ELECTRICAL

MAXIMUS MBX exclusively supports VIDEOTECH products from the MAXIMUS range with 24Vac and WASEX with 24Vac.

Maximum power output: 120W

Input voltages available:

- 230Vac, 50/60Hz
- 24Vac, 50/60Hz
- 120Vac, 50/60Hz

Possible system configurations:

- up to 1 PTZ + 1 wash system
- up to 2 fixed cameras + 2 wash systems

NETWORK

4 channels unmanaged ethernet switch:

3 RJ45 ports

- Ethernet connection: 10BASE-T/100BASE-T

1 SFP port (SMALL FORM FACTOR PLUGGABLE)

- Ethernet connection: 100BASE-FX
- Supply voltage: 3.3V
- Standard: compliant MSA

The SFP module (not supplied by VIDEOTECH) must meet the following requirements:

- Laser: Class 1, complies with EN60825-1
- UL/IEC 60950-1 or UL/IEC 62368-1 Certification

ANALOGUE VIDEO

2 bypass for analog video signals with BNC connectors

I/O INTERFACE

2 bypass for I / O signals with multi-pin connectors

ENVIRONMENT

For indoors and outdoors installation

Certification temperature: from -40°C (-40°F) up to +80°C (+176°F)

Operating temperature: from -40°C (-40°F) up to +70°C (158°F)

Relative humidity: from 5% up to 95%

CERTIFICATIONS

Electrical safety (CE): EN60950-1, IEC60950-1, EN62368-1, IEC62368-1

Electromagnetic compatibility (CE): EN50130-4, EN5032 (Class B), EN61000-6-3, EN61000-3-2, EN61000-3-3

RoHS (CE): EN50581

Outdoor installation (CE): EN60950-22, IEC60950-22

Vibration test: EN50130-5, EN60068-2-6

UL certification (UL60950-1, CAN/CSA C22.2 No. 60950-1-07, UL62368-1, CAN/CSA C22.2 No. 62368-1-14): cULus Listed

Electromagnetic compatibility (North America): FCC part 15 (Class B), ICES-003 (Class B)

IP protection degree (EN/IEC60529): IP66, IP67, IP68, IP69

Level of protection Type (UL50E): 4X, 6P

RCM (Australian and New Zealand Regulatory Compliance Mark)

CERTIFICATIONS - EXPLOSION-PROOF APPLICATIONS

ATEX (EN IEC 60079-0, EN 60079-1, EN 60079-31)

IECEX (IEC 60079-0, IEC 60079-1, IEC 60079-31)

UL listed for USA (UL 60079-0, UL 60079-1, UL 60079-31)

UL listed for Canada (CAN/CSA-C22.2 NO. 60079-0, CAN/CSA-C22.2 NO. 60079-1, CAN/CSA-C22.2 NO. 60079-31)

EAC Ex (TR CU 012/2011)

INMETRO (ABNT NBR IEC 60079-0, ABNT NBR IEC 60079-1, ABNT NBR IEC 60079-31)

KCs (Employment and labor department. 2020-33)

For further details on certifications and markings, consult the relevant table.

CERTIFICATIONS - MARINE APPLICATIONS

Lloyd's Register Marine Type Approval certification:

Test Specification Number 1 (ENV1, ENV2, ENV3, ENV5)

Electromagnetic compatibility: EN60945

Salty fog resistance: EN60068-2-52

Used With



MXV2P0WF001A

High-Spec Ex-Proof Day/Night Camera in a Compact Design

Item Number: 2310131011



MXV-HD2-F0WAZ01A

Explosion-Proof IP Camera, 1080p, 30x zoom, Wiper

Item Number: 2310131010



MXV-HD210-WAZ00B

Explosion-proof camera

Maximus MXV Delux Explosion-proof FULL HD CCTV camera

Item Number: 2310131022



MPXHD21A000C Series2 EX

PTZ Camera

MPX Series 2 Delux IP PTZ Ex camera, super low-light, full HD

Item Number: 2310131030