



3005020062

## STB-6

Parallel station This product has been replaced by Phontech CIS Talk-Back System

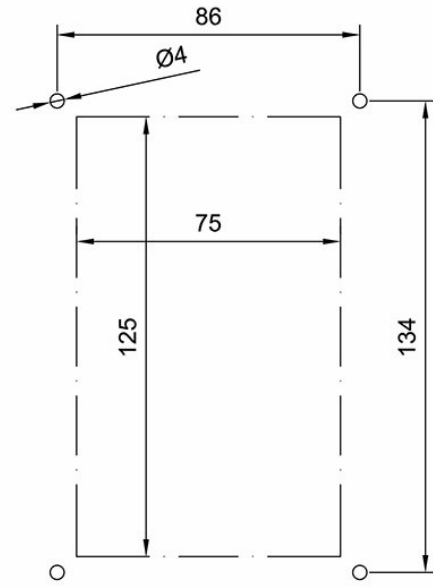
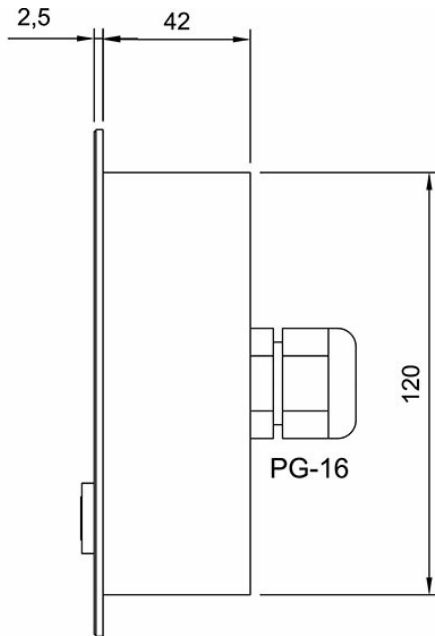
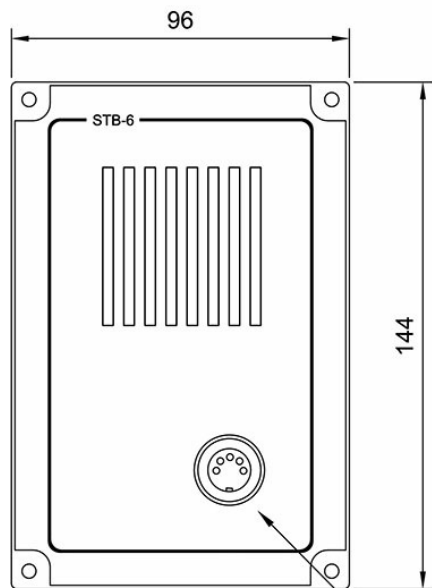
This product will be replaced by the equivalent [Phontech solution](#), but Zenitel will honor prior commitments given to the market. Therefore, we will continue to provide expansion and spare-part service for this product.

---

### Description

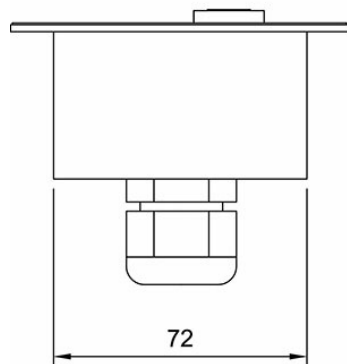
- ✓ Parallel station for indoor use
- ✓ Parallel microphone / loudspeaker for ETB and CTB operator panels
- ✓ Flush mounting
- ✓ Wall mounting with back box
- ✓ Socket for handheld microphone

### Technical Dimensions



5P Microphone contact for handheld microphone

Cut out hole 125 x 75



# Specifications

## SPECIFICATIONS

Dimensions (mm)	144W x 96H x 42D
Mounting	4 x 4mm screws
Weight	Approx. 0.35 kg
Housing	Aluminium
Colour	Black
IP-rating	IP-22
Cable entry	PG-16
Connections	Screw terminal
Loudspeaker	3 W
Temperature operating	-15 to +55 °C

## Accessories



### STBOKS

Wall Mount Backbox for STB-6 & STB-6GN



### ETC-1-TB

Hand Microphone