

2310111179

## OC-PTZ-2MP-v2

Outdoor IP Camera, PTZ, 2MP, SST 316L, Hi-PoE &amp; 24VAC



- ✓ 1/1.8" Progressive Scan CMOS
- ✓ Up to 1920 × 1080 resolution
- ✓ Min. Illumination: Color: 0.002 Lux @(F1.5, AGC ON), B/W: 0.0002 Lux @(F1.5, AGC ON), 0 Lux with IR
- ✓ 32 × optical zoom, 16 × digital zoom
- ✓ 140 dB WDR, 3D DNR, HLC
- ✓ 24 VAC Hi-PoE
- ✓ Support H.265+/H.265 video compression
- ✓ Support Rapid focus
- ✓ IK10, IP67
- ✓ Anti-Corrosion



IP67

## Description

Anti-Corrosion OC-PTZ-2MP-v2 smart PTZ Network Dome outdoor IP camera is able to effectively avoid acidic and neutral salt fog corrosion. OC-PTZ-2MP-v2 is also able to capture high quality colored images in dim light environment with its cutting-edge low illumination level down to 0.002Lux (color). Embedded with 1/1.8" progressive scan CMOS chip makes true WDR (140dB) and 2MP real-time resolution possible. With the 32X optical zoom Day/Night lens, the camera offers more details over expansive areas. The Anti-Corrosion PTZ camera also features a wide range of smart functions, including face detection, intrusion detection, line crossing detection and audio exception, benefitting users with great improvement on security efficiency, more importantly, with key events / objects being recorded for further forensic needs. These features, combined with smart tracking, which enables the camera to detect any progressively moving object and follow it within the camera's area of coverage without fault. Smart Defog and EIS (Electronic Image Stabilization) are further supported to improve image quality in challenging conditions.

## Function description

### Basic function:

- ✓ Anti-corrosion stainless steel, effectively avoid acidic and neutral salt fog corrosion
- ✓ NEMA 4X anti-corrosion standard
- ✓ IP67 standard
- ✓ High performance CMOS, up to 1920x1080 resolution
- ✓ ±0.1° Preset Accuracy
- ✓ Open-ended API, ISAPI, Hikvision SDK, Third-party management platform, Ehome, ISUP, ONVIF (Profile S, Profile G, Profile T), to ensure greater interoperability between different platforms and compatibility
- ✓ 3D intelligent positioning function
- ✓ 3D DNR
- ✓ 7 alarm inputs and 2 alarm outputs
- ✓ Scheduled PTZ movement

### Smart function:

- ✓ Smart tracking modes: Manual/Panorama/ Intrusion trigger/ Line crossing trigger/ Region exiting trigger, support smart tracking when patrol between multiple scenarios
- ✓ Smart detection: Support Face detection, Intrusion detection, Line crossing detection, Audio exception detection, Region entrance detection, Region exiting detection
- ✓ Smart recording: Support edge recording, support dual-VCA for smart search in smart NVR
- ✓ Smart image processing: Support defog, HLC, EIS
- ✓ Smart codec: Low bit rate, ROI

## Camera function:

- ✓ Auto iris, auto focus, auto white balance, backlight compensation and auto day & night switch
- ✓ Min. Illumination: 0.002Lux@(F1.5,AGC ON)(Color), 0.002Lux@(F1.5,AGC ON)(B/W)
- ✓ Support privacy mask with multiple colors and mosaics on polygonal areas

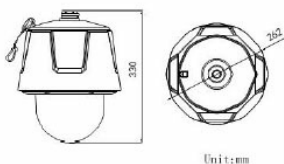
## PTZ function:

- ✓ 360° endless pan range and -20°~ 90° tilt range
- ✓ 540°/s Pan Preset Speed and 400°/s Tilt Preset Speed
- ✓ 0.1°~ 300°/s Manual Pan Speed and 0.1°~ 240°/s Manual Tilt Speed
- ✓ 300 presets programmable; preset image freezing capability
- ✓ 8 patrols, up to 32 presets per patrol
- ✓ 4 patterns, with the recording time not less than 10 minutes per pattern
- ✓ Proportional zoom function
- ✓ Park action: auto call up of PTZ movement, after a defined time of inactivity
- ✓ Power-off memory: restore PTZ & Lens status after reboot

## Network function:

- ✓ H.264/MJPEG/MPEG4 video compressio
- ✓ H.264 encoding with Baseline/Main/High profile
- ✓ ROI(Region of Interest) encoding(support 24 areas with adjustable levels)
- ✓ Built-in Web server
- ✓ Onboard storage, up to 128GB
- ✓ Support up to 8 NAS storage; Edge recording(transmit the videos from SD card to the NAS after network resumed) HTTPS encryption and IEEE 802.1X port-based network access control
- ✓ Support trip-streams
- ✓ Multiple network protocols supported: IPv4/Ipv6, HTTP, HTTPS, 802.1X, QoS, FTP, SMTP, UPnP, SNMP, DNS, DDNS, NTP, RTSP, RTP, TCP, UDP, IGMP, ICMP, DHCP, PPPoE
- ✓ 1 audio input and 1 audio output

## Technical Dimensions



# Specifications

## CAMERA MODULE

Image Sensor	1/1.8" Progressive Scan CMOS
Min. Illumination	F1.5, AGC On: Color: 0.002 lux, B/W: 0.0002 lux
Max. Image Resolution	1920×1080
Focal Length	5.9-188.8mm, 32x Optical
Digital Zoom	16X
Zoom Speed	Approx.4.5s(Optical Wide-Tele)
Angle of View	59.8-3.3 degree (Wide-Tele)
Min. Working Distance	10-1500mm(Wide-Tele)
Aperture Range	F1.5
Focus Mode	Auto / Semiautomatic / Manual
WDR	140dB
S / N Ratio	≥ 52dB
Shutter Time	50Hz: 1~1/30,000s; 60Hz: 1~1/30,000s
AGC	Auto / Manual
White Balance	Auto / Manual /ATW/Indoor/Outdoor/Daylight lamp/Sodium lamp
Day & Night	ICR
Privacy Mask	24 privacy masks programmable; optional multiple colors and mosaics
Enhancement	3D DNR, EIS, Defog, HLC/BLC, SVC

## PAN AND TILT

Range	Pan:360° endless; Tilt: - 15°~90°(Auto Flip)
Speed	Pan Manual Speed: 0.1°~300°/s, Pan Preset Speed: 540°/s  Tilt Manual Speed: 0.1°~240°/s, Tilt Preset Speed: 400°/s
Number of Preset	300
Patrol	8 patrols, up to 32 presets per patrol
Pattern	4 patterns, with the recording time not less than 10 minutes per pattern
Park Action	Preset / Patrol / Pattern / Auto scan / Tilt scan / Random scan / Frame scan / Panorama scan
Scheduled Task	Preset / Patrol / Pattern / Auto scan / Tilt scan / Random scan / Frame scan / Panorama scan/Dome reboot/Dome adjust/Aux output

**SMART FEATURES**

Smart tracking	Manual/ Panorama/ Intrusion trigger/ Line crossing trigger/ Region entrance trigger/ Region exiting trigger Smart tracking when patrol between multiple scenarios
Smart detection	Face detection, Intrusion detection, Line crossing detection, Audio exception detection, Region entrance detection, Region exiting detection
ROI encoding	Support 24 areas with adjustable levels

**ALARM**

Alarm I/O	7/2
Alarm Trigger	Face detection, Intrusion detection, Line crossing detection, Region entrance, Region exiting, Audio exception detection, Motion detection, Dynamic analysis, Tampering alarm, Network disconnect, IP address conflict, Storage exception
Alarm Action	Preset, Patrol, Pattern, Micro SD/SDHC card recording, Relay output, Notification on Client

**INPUT / OUTPUT**

Monitor Output	1.0V[p-p] / 75Ω, NTSC (or PAL) composite, BNC
Audio Input	1 audio input, 2.0 to 2.4Vp-p, 1k Ohm±10%
Audio Output	1 audio output, line level, impedance: 600 Ω

## NETWORKING AND PROTOCOLS

Ethernet	10Base-T / 100Base-TX, RJ45 connector
Main Stream	50Hz: 25fps(1920×1080, 1280×960, 1280×720); 60Hz: 30fps(1920×1080, 1280×960, 1280×720)
Sub Stream	50Hz: 25fps (704 × 576, 640 × 480, 352 × 288); 60Hz: 30fps (704 × 480, 640 × 480, 352 × 240)
Third Stream	50Hz: 25fps (1920 × 1080, 1280 × 960, 1280 × 720, 704 × 576, 640 × 480, 352 × 288) 60Hz: 30fps (1920 × 1080, 1280 × 960, 1280 × 720, 704 × 480, 640 × 480, 352 × 240)
Image Compression	H.265,H.264,MJPEG
Audio Compression	G.711alaw,G.711ulaw,G.722.1,G.726,MP2L2,PCM
Protocols	IPv4/IPv6, HTTP, HTTPS, 802.1x, Qos, FTP, SMTP, UPnP, SNMP, DNS, DDNS, NTP, RTSP, RTCP, RTP, TCP/IP, DHCP, PPPoE, UDP, IGMP, ICMP, Bonjour
Simultaneous Live View	Up to 20 users
Mini SD Memory Card	Support up to 128GB Micro SD/SDHC/SDXC card. Support Edge recording
User/Host Level	Up to 32 users,3 Levels: Administrator, Operator and User
Security Measures	User authentication (ID and PW), Host authentication (MAC address); HTTPS encryption; IEEE 802.1x port-based network access control; IP address filtering

## SYSTEM INTEGRATION

Application programming	Open-ended API, ISAPI, Hikvision SDK, Third-party management platform, Ehome, ISUP, ONVIF (Profile S, Profile G, Profile T)
Web Browser	IE11, Chrome 57.0+, Firefox 52.0+, Safari 11+
RS-485 Protocols	HIKVISION, Pelco-P, Pelco-D, self-adaptive
Power	Hi-PoE & 24 VAC, Max.45W (including max. 5 W for heater)
Working Temperature	-40°C ~ 70°C (-40°F ~ 158°F)
Humidity	95% or less
Anti-corrosion standard	NEMA 4X
Protection Level	Lightning Protection, Surge Protection and Voltage Transient Protection, ±6kV Line to Gnd, ±3kV Line to Line, IEC61000-4-5, IP67 Standard, IK10
Certification	FCC SDoC (47 CFR Part 15, Subpart B); CE-EMC (EN 55032: 2015, EN 61000-3-2: 2019, EN 61000-3-3: 2013, EN 50130-4: 2011 +A1: 2014); RCM (AS/NZS CISPR 32: 2015); IC VoC (ICES-003: Issue 6, 2019); KC (KN 32: 2015, KN 35: 2015), UL (UL 62368-1) CB (IEC 60950-1:2005 + Am 1:2009 + Am 2:2013, IEC 62368-1:2014); CE-LVD (EN 62368-1:2014+A11:2017), BIS (IS 13252(Part 1):2010+A1:2013+A2:2015); LOA (SANS IEC60950-1), CE-RoHS (2011/65/EU); WEEE (2012/19/EU); Reach (Regulation (EC) No 1907/2006)
Dimensions	Φ262(mm) ×330(mm)
Weight (approx.)	10kg (approx.)

## ACCESSORIES

231011123	SST 316L Junction box for OC-series cameras
231011125	60W High PoE midspan (PoE injector) 110-230VAC

## Accessories



LAS60-57CN-RJ45

60W High PoE midspan (PoE injector)  
110-230VAC

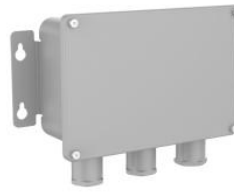
Item Number: 2310111125



OC-PTZ-WB Wall Mount Bracket

Anticorrosive wall mount bracket for OC-PTZ-2MP CCTV Camera.

Item Number: 2310111126



SST 316L Junction Box for OC-series Cameras

Junction box

Item Number: 2310111172