

1200410401

MPS40-GO-IP

Desk Mount Paging and Emergency Mic with 40 Buttons - Gooseneck - IP enabled

 SUPERSEDED BY THE MPS40-G, SUPPORTING BOTH ANALOGUE AND IP CONNECTIVITY

Description

The MPS40 is a powerful and flexible 40 button paging and or emergency microphone which can provide live, store-and-forward, and recorded message broadcast into user selected zones. Including EN 54 compliant emergency functions and all mandatory indicators and controls.

It consists of a sloping desk console with a flexible gooseneck paging microphone, graphic LCD display, and silent operation 'Touch to Talk' touch pad PTT button. PA zone selection is provided by the Select buttons or by using the rotary selector and graphic LCD display. There is also a VU bar-graph which displays the microphone signal level.

The MPS range can be connected directly to either one or two ASL audio routers using analogue audio and a serial link. There is also an RJ45 Ethernet IP interface with Power over Ethernet for connection to ASL IP PA/VA systems, and for use with VIPA enabled PC workstations. All interconnecting cabling and the microphone capsule are continuously monitored.

As well as the main microphone gooseneck, there is a 3.5mm jack plug connection for an auxiliary audio input, such as for background music, and for connection of a microphone headset. A general purpose local contact input and output enables use with PTT foot switches and external speak-now indicators.

The MPS microphone range can be used freestanding on a desk as standard, or can be permanently mounted with the optional mounting bracket MPX. This bracket gives options to mount the microphone flat on a wall, built onto consoles or fixed on desks.

The MPS can be purchased with a fist microphone replacement for the standard gooseneck if required. Please contact Zenitel for more details.

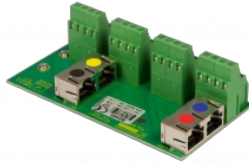
Accessories



VIPEDIA-BOA01

Din Rail Mount RJ45 Breakout Adapter - Single Port

Item Number: 1200550010



VIPEDIA-BOA02

Din Rail Mount RJ45 Breakout Adapter - Four Port

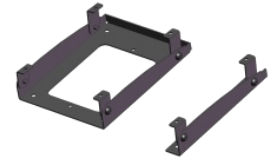
Item Number: 1200550020



MPX10

Expansion Module for MPS01 with 10 buttons

Item Number: TBD



MPX10-MB

Wall or desk mount bracket kit for MPS10 and MPS20 microphones

Item Number: 1200560100

Used With



VIPEDIA-12-NET

PAVA Audio router with network card

Item Number: 1200100012



VIPEDIA-12-PRO

PAVA Audio router with network card - Dante Enabled

Item Number: 1200100121



INTEGRA-03

Wall Mount PAVA System (3 amps)

Item Number: 1200300030



INTEGRA-05

PAVA Wall Mount System (5 amp channels pre installed)

Item Number: 1200300050



INTEGRA-07

PAVA Wall Mount System (7 amp channels pre installed)

Item Number: 1200300070



INTEGRA-10

PAVA Wall Mount System (10 amp channels pre installed)

Item Number: 1200300100



INTEGRA-PRO-03

PAVA Wall Mount System (3 amp channels pre installed) - Dante® Enabled

Item Number: 1200300031



INTEGRA-PRO-05

PAVA Wall Mount System (5 amp channels pre installed) - Dante® Enabled

Item Number: 1200300051

Zenitel and its subsidiaries assume no responsibility for any errors that may appear in this publication, or for damages arising from the information therein. Zenitel products are developed and marketed by Zenitel. The company's Quality Assurance System is certified to meet the requirements in NS-EN ISO 9001. Zenitel reserves the right to modify designs and alter specifications without notice.

ZENITEL PROPRIETARY. This document and its supplementing elements, contain Zenitel or third party information which is proprietary and confidential. Any disclosure, copying, distribution or use is prohibited, if not otherwise explicitly agreed in writing with Zenitel. Any authorized reproduction, in part or in whole, must include this legend; Zenitel – All rights reserved.



INTEGRA-PRO-07

PAVA Wall Mount System (7 amp channels pre installed) - Dante® Enabled

Item Number: 1200300071



INTEGRA-PRO-10

PAVA Wall Mount System (10 amp channels pre installed) - Dante® Enabled

Item Number: 1200300101