

2310102128

## DuraMON 24 inch Marine Display

24" Monitor



- ✓ 24" Wide Screen
- ✓ 1920 x 1080
- ✓ 16:9 format
- ✓ LED backlight
- ✓ Low Power consumption

---

### Description

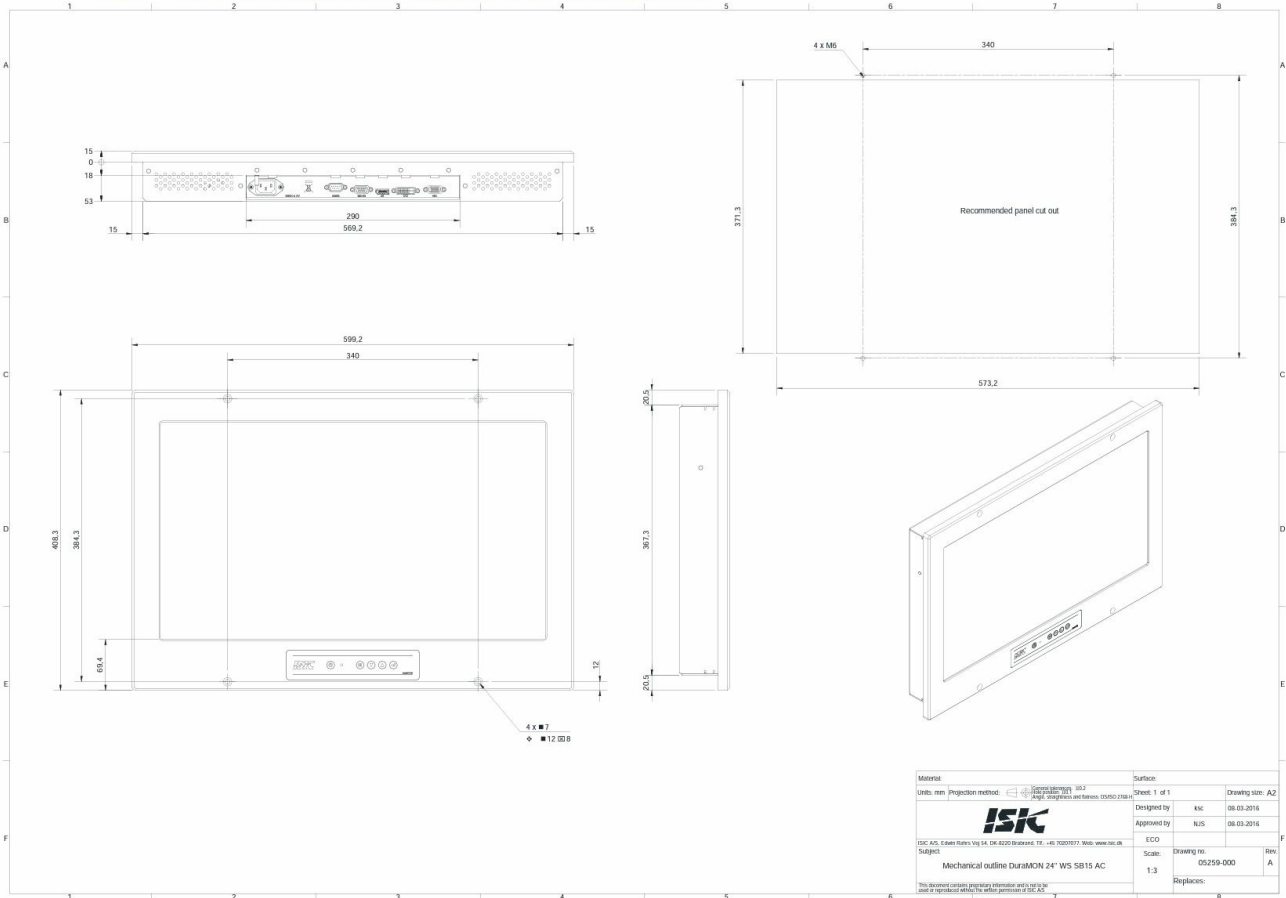
The DuraMON 24 inch Marine Display is a full HD 16:9 wide screen monitor designed for marine application. It has micro switch keys with backlight and LED backlight dimming from 100% to 0%.

### DuraMON 24 inch Marine Display

It has sea water resistant aluminum with black power coating RAL 9005 on the front and rear. Desk, wall, or roof mounting brackets are available. The monitor is compliant with IEC 60945 and IACS E10 with DDC communication for dusk, day, and night.

### Technical Dimensions

# 6.10 Mechanical outline DuraMON 24"



Material:	Surface:
Units: mm Projection method: 1st angle projection	Sheet: 1 of 1 Drawing size: A2
	Designed by: KIC 08.03.2016
	Approved by: NIS 08.03.2016
ISE: Gb, Eichen Kofen, Vlg 14, Dk 8220 Brunnau, Tel.: +49 750201977, Web: www.isk.de Subject: Mechanical outline DuraMON 24" WS SB15 AC	ECO: Scale: 1:3 Drawing no.: 05259-000 Replaces:
This document contains proprietary information and is not to be used or reproduced without the written permission of ISK.	Rev: A

# Specifications

## GENERAL DISPLAY

Size- Active Area (Aspect)	24" - 521.28 x 293.22 (16/9)
Luminance	250 Cd/m2
Contrast	1000:1
Resolution	1920 x 1080
View Angle (L/R/T/B)	89/89/89/89
Materials	Front and Rear: Sea Water Resistant Aluminium w. black power coating RAL 9005
Window	Anti Reflection coated front glass
Protection	IP65 front – IP20 rear (IP 22 with optional rear-cover)

## INPUT / OUTPUT

Video Inputs-RGB	Analogue 0.7 Vpp positive at 75Ω
	Separate sync or sync on green
	Generally all VESA compatible video modes are supported up to 165MHz (up to UXGA 60Hz and WUXGA 60Hz reduced blanking).
	Horizontal sync: 15-100 kHz (automatic)
	Vertical sync: 30-85 Hz up to 1280x1024
	30-60 Hz up to 1920x1200
Video Inputs-DVI	Generally all VESA compatible video modes are supported up to 160MHz (up to UXGA 60Hz and WUXGA 60Hz reduced blanking). DDC communication for adjustment for Day / Dusk / Night. (Optional extra)
Control Inputs	1x RS232 – for remote control

## POWER SUPPLY

Standard	90-264Vac. 50-60Hz Input
Optional	18-36Vdc Input
Power Consumption	25 - 40 Watt(Max)

## ENVIRONMENTAL CONDITIONS

Operating Temperature	-15 to 55 °C
Storage Temperature	-25 to 70 °C
Relative Humidity	8 to 90 %

## APPROVALS

CE Mark	EN61000-6-2 & EN61000-6-4
Marine	IACS E10 Rev. 5 & IEC 60945 Ed. 4
Type Approvals	DNV, ABS, GL, LR, BV, CCS

## PHYSICAL DIMENSIONS

Size	601 (W) x 408 (H) x 68 (D)
Weight	10kg

## Accessories



### DuraMON Monitor Stand 24” to 27”

Monitor Stand

Item Number: 2310102132