

2310111188

DS-2XC6245G0-L 4 MP Varifocal Underwater Camera

Underwater Varifocal Camera



- ✓ 316L Stainless Steel enclosure
- ✓ 3- 9mm varifocal lens
- ✓ H.265+/H.265/H.264+/H.264
- ✓ DarkFighter technology
- ✓ WDR technology
- ✓ IP68



H.264

Description

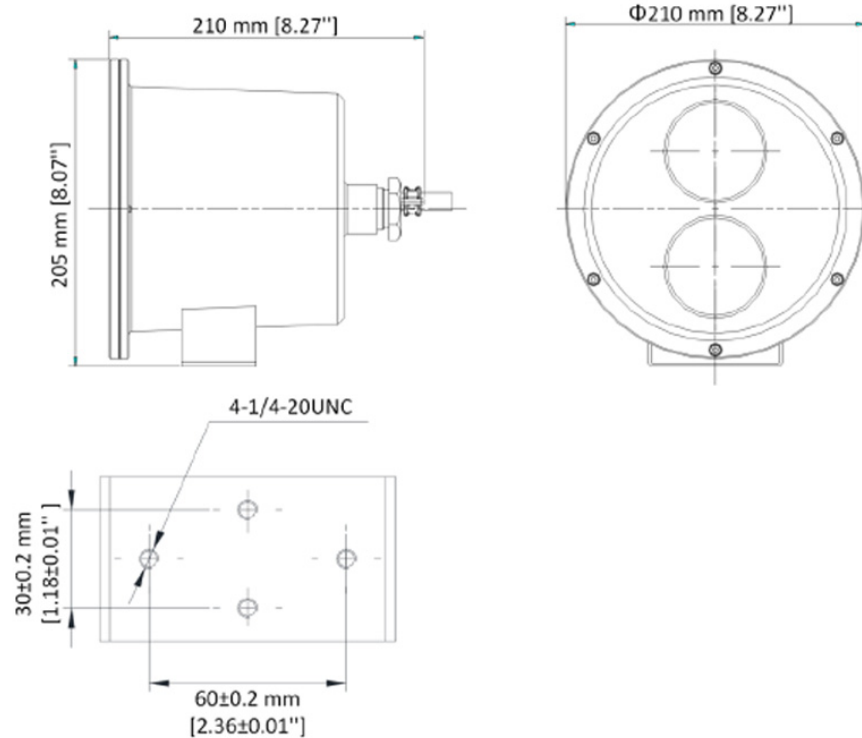
The DS-2XC6245G0-L 4 MP Varifocal Underwater Camera is equipped for use in areas where professional anti-corrosion protection is a must. The camera has a 316L stainless steel enclosure so it can be used in corrosive environments, providing reliability and longevity compared to standard cameras. It has a IP68 rating which means that the camera can be used underwater up to 50 meters in depth. It has a supplemental white light with a range of up to 10m.

DS-2XC6245G0-L 4 MP Varifocal Underwater Camera

It has a 1/1.8" Progressive Scan CMOS image sensor and a maximum resolution of 2688 x 1520. Additionally, it features a 3 to 9 mm varifocal lens and supports up to 6 simultaneous live view channels. The network can support up to 32 users with 3 levels of administration (user, operator, and administrator).

It supports H.265+/H.265/H.264+/H.264 encoding which is an efficient compression technology that saves storage space and reduces bandwidth requirements. It comes with DarkFighter technology that enables the capture of high quality color images in even the dimmest lighting environments. Additionally, the camera features True WDR technology with a WDR of 120 dB providing clear imaging even with strong back lighting.

Technical Dimensions



Specifications

CAMERA

| | |
|-------------------|--|
| Image Sensor | 1/1.8" Progressive Scan CMOS |
| Max. Resolution | 2688 × 1520 |
| Min. Illumination | Color: 0.001 Lux @ (F1.0, AGC ON), B/W: 0 Lux with Light |
| Shutter Time | 1/3 s to 1/100,000 s |

LENS

| | |
|--------------------|---|
| Lens Type | Varifocal lens, 3 to 9 mm |
| Focal Length & FOV | 3 to 9 mm, horizontal FOV 87° to 45.8°, vertical FOV 46° to 25.6°, diagonal FOV 104° to 52.4° |
| Aperture | F1.0 |

DORI

| | |
|------|---|
| DORI | Wide: D: 55.2 m, O: 21.9 m, R: 11.0 m, I: 5.5 m |
| | Tele: D: 124.1 m, O: 49.3 m, R: 24.8 m, I: 12.4 m |

ILLUMINATOR

| | |
|------------------------|-------------|
| Supplement Light Type | White Light |
| Supplement Light Range | Up to 10 m |

VIDEO

| | |
|-----------------------------|--|
| Main Stream | 50 Hz: 25 fps (2688 × 1520, 1920 × 1080, 1280 × 720) |
| | 60 Hz: 30 fps (2688 × 1520, 1920 × 1080, 1280 × 720) |
| Sub-Stream | 50 Hz: 25 fps (640 × 480, 640 × 360) |
| | 60 Hz: 30 fps (640 × 480, 640 × 360) |
| Third Stream | 50 Hz: 1 fps (1920 × 1080, 1280 × 720, 640 × 480, 640 × 360) |
| | 60 Hz: 1 fps (1920 × 1080, 1280 × 720, 640 × 480, 640 × 360) |
| Video Compression | Main stream: H.265+/H.265/H.264+/H.264 |
| | Sub-stream: H.265/H.264/MJPEG |
| | Third stream: H.265/H.264 |
| Video Bit Rate | 32 Kbps to 8 Mbps |
| H.264 Type | Baseline Profile/Main Profile/High Profile |
| H.265 Type | Main Profile |
| Scalable Video Coding (SVC) | H.264 and H.265 encoding |
| Region of Interest (ROI) | 5 fixed regions for each stream |
| Target Cropping | Yes |

NETWORK

| | |
|------------------------|---|
| Protocols | TCP/IP, ICMP, HTTP, HTTPS, FTP, DHCP, DNS, DDNS, RTP, RTSP, RTCP, PPPoE, NTP, UPnP, SMTP, SNMP, IGMP, 802.1X, QoS, IPv6, UDP, Bonjour |
| Simultaneous Live View | Up to 6 channels |
| API | Open Network Video Interface, ISAPI, ISUP 5.0 |
| User/Host | Up to 32 users |
| | 3 levels: Administrator, Operator, User |
| Network Storage | NAS (NFS, SMB/CIFS), ANR |
| Client | iVMS-4200, Hik-Connect |
| Web Browser | Plug-in required live view: IE10, IE11 |
| | Local service: Chrome 57.0+, Firefox 52.0+ |

IMAGE

| | |
|--------------------------|---|
| Image Parameters Switch | Yes |
| Image Settings | Rotate mode, saturation, brightness, contrast, sharpness, AGC, and white balance adjustable by client software or web browser |
| Day/Night Switch | Day, Night, Auto, Schedule |
| Wide Dynamic Range (WDR) | 120 dB |
| Image Enhancement | BLC, HLC, 3D DNR, defog |

INTERFACE

| | |
|--------------------|---|
| Ethernet Interface | 1 RJ45 10 M/100 M self-adaptive Ethernet port |
| On-Board Storage | Built-in memory card slot, support microSD/SDHC/SDXC card, up to 128 GB |

EVENT

| | |
|-------------|--|
| Basic Event | Motion detection, video tampering alarm, exception (network disconnected, IP address conflict, illegal login, HDD full, HDD error) |
| Smart Event | Line crossing detection, intrusion detection, region entrance detection, region exiting detection Scene change detection, unattended baggage detection, object removal detection |

GENERAL

| | |
|----------------------------------|---|
| Power | 36 VDC \pm 20%, 0.6 A, max. 17 W, two-core terminal block |
| | PoE (802.3.at, Class 3, 42.5 V to 57 V), 0.45 A to 0.3 A, 17 W |
| Material | SUS 316L Metal |
| Dimensions | 210 mm \times 210 mm \times 205 mm |
| Package Dimensions | 700 mm \times 530 mm \times 365 mm |
| Weight | Approx. 12 kg |
| With Package Weight | Approx. 16 kg |
| Startup and Operating Conditions | -30 °C to 60 °C. Humidity 100% or less (non-condensing) |
| Language | 33 languages: English, Russian, Estonian, Bulgarian, Hungarian, Greek, German, Italian, Czech, Slovak, French, Polish, Dutch, Portuguese, Spanish, Romanian, Danish, Swedish, Norwegian, Finnish, Croatian, Slovenian, Serbian, Turkish, Korean, Traditional Chinese, Thai, Vietnamese, Japanese, Latvian, Lithuanian, Portuguese (Brazil), Ukrainian |
| General Function | Heartbeat, password protection, privacy mask, watermark, IP address filter, mirror |
| Cable Length | 50 m (included) |

APPROVAL

| | |
|------------|--|
| EMC | FCC: FCC-SDoC (ANSI C63.4, FCC Part15 sub B) |
| | CE: CE-EMC (EN 50130-4:2011+A1:2014, EN 55032:2015, EN 61000-3-2:2014, EN 61000-3-3:2013) |
| | RCM: AS/NZS 60950.1:2003 + Am1, Am2 and Am3, AS/NZS CISPR 32:2015 |
| | IC: IC-VoC (ICES-003 Issue 7:2020) |
| | KC: KN 301489-1, KN 301489-17, RRA NOTICE 2017-14(2017.12.05), RRA NOTICE 2017-19 (2017.12.28) |
| Safety | UL: UL 62368-1: 2014, CAN/CSA C22.2 No. 62368:2014 |
| | CB: IEC 62368-1:2014 |
| | BIS: IS 13252 (Part 1) 2010+A1:2013+A2:2015 |
| | LOA: SANS IEC60950-1 |
| Protection | IP68 (IEC 60529-2013) |