

2131000152

VLS-15T/F-MED

Horn Speaker 100V, 15W



- ✓ MED approved
- ✓ Robust and versatile horn speaker
- ✓ Suitable for outdoor installation in harsh environments
- ✓ Prepared for loop in/ loop out connection
- ✓ 1x M20 gland and 1x blind plug included



MED Certification



MER Certification



IP66

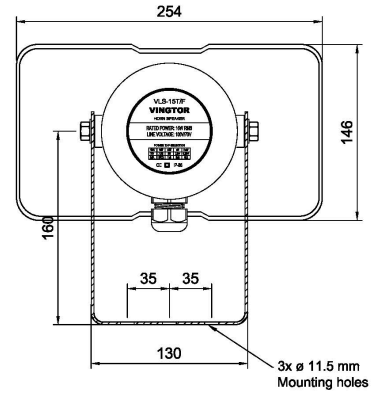
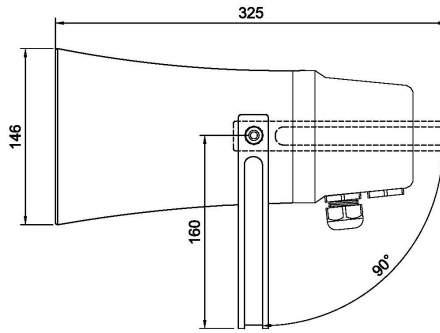
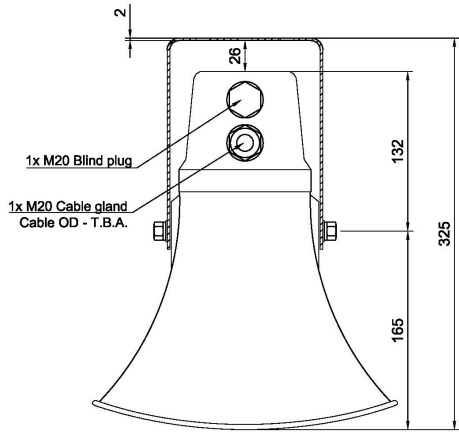
Description

The VLS-15T/F-MED is a robust and versatile 15W horn speaker designed for challenging environments. It's MED approved, making it ideal for use on ships, particularly in noisy areas like engine rooms or outdoor spaces. This speaker is also well-suited for various industrial settings where clear, loud sound is crucial.

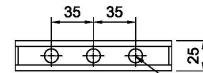
Built to withstand harsh conditions, the VLS-15TF offers reliable performance in tough environments. It comes equipped with a 100V line transformer and fuse, ensuring safety and compatibility with standard PA systems. The speaker supports loop in/loop out connections, simplifying the installation of multiple units.

One of the key features of the VLS-15TF is its adjustable power output. Users can select from four different power tapings: 2.5W, 5W, 10W, and 15W. This flexibility allows the speaker to be optimized for different spaces and noise levels. For easy installation, the package includes one M20 gland and one blind plug.

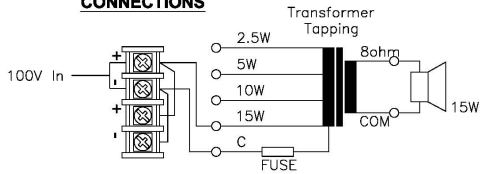
Technical Dimensions



Rear View



CONNECTIONS



TECHNICAL DATA

Colour :	Grey (RAL 7035)
IP-Rating :	IP-66
Material:	Speaker - ABS Mounting bracket - Stainless Steel (14SWG)/2mm
Line Voltage:	100V
Rated Power:	15W, 10W, 5W, 2.5W
Weight :	1.9kg

Specifications

GENERAL

Dimension (mm)	253W x 152H x 309D
Material, finish	ABS, grey
Mounting	Bracket, stainless steel grade 304
Connection	1x M20 gland and 1x blind plug included
Weight	1,85 kg
Rated Power	15W
Max Power Rating	23W
Power tapings	15W - 10W - 5W - 2,5 W
Frequency response	275 Hz - 7 KHz
Sensitivity	106dB/1W/1m
Maximum SPL	118dB
Dispersion angle	60° x 90° (V x H)
IP rating	IP66
Temperature range	-40 °C - +55 °C
Impedance	670/ 1k/ 2k/ 4kΩ
Environmental Condition	Exposed
Compass Safe Distance	245 cm

OTHER

2131000207	Additional M20 cable gland for VLS-15(TF)/VLS-30(TF). Not included and not mounted.
------------	---

Installation and operation:

1. Mount cable through cable gland and connect cable leads to 100V line in + - terminals
2. Select required loudspeaker tapping
3. Fasten the back box onto front of loudspeaker
4. Fasten cable gland(s) and ensure the cable leads are not placing strain on the terminals
5. Place loudspeaker and mount using mounting holes on bracket

6. Once installed the loudspeaker can be used

Maintenance:

1. No scheduled maintenance is required
2. For any kind of maintenance secure loudspeaker is not energized
3. Loudspeaker is equipped with fuse. If fuse broken remove back box from front loudspeaker to access

Accessories



VLS-GLAND

Cable gland for VLS-15/30