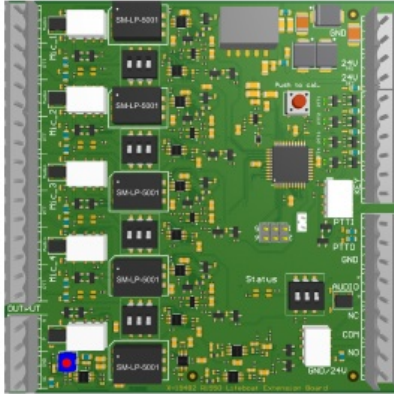


4000019615

Life Boat Extension

Module for extending Microphone panel connections



Description

Life Boat Extension module is a function board to extend microphone panels connections from up to four (4) panels into a single connection into system.

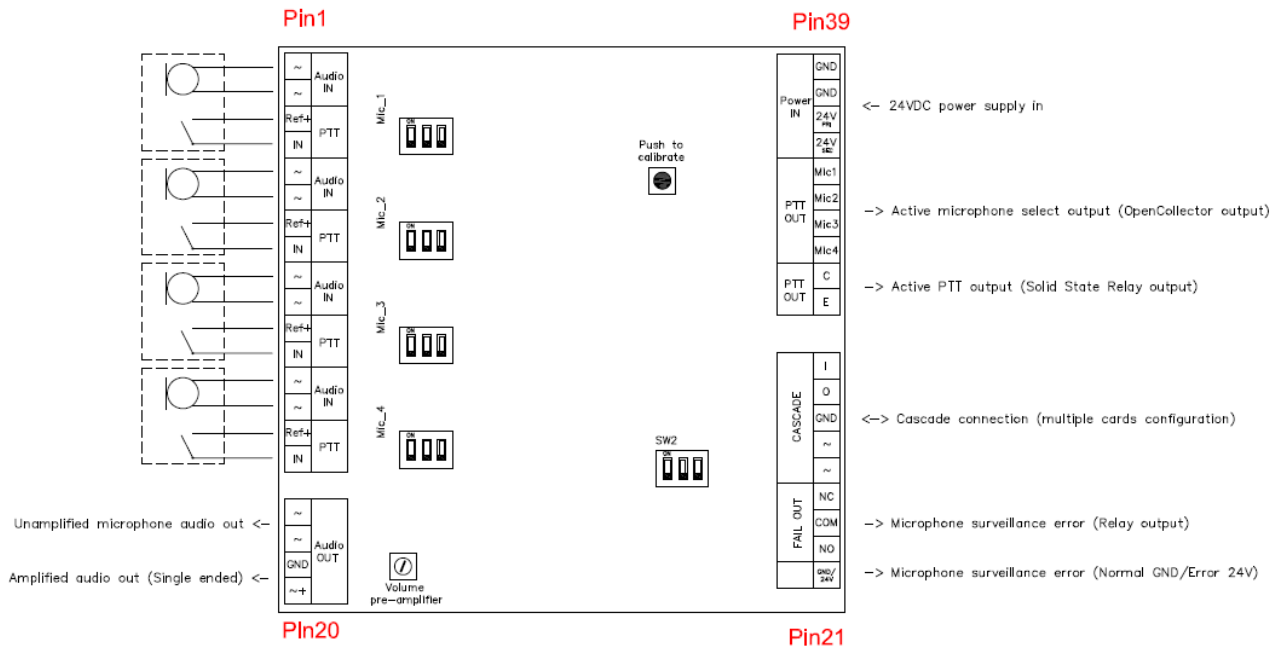
This extension module also provides amplification of the four inputs as well as the possibility for microphone surveillance (selectable).

- ✓ Preamplifier for microphone
- ✓ Potentiometer for adjustable volume and sensitivity
- ✓ Surveillance of connected microphones
- ✓ Relay output for fault status
- ✓ 24 VDC
- ✓ DIN rail mounting

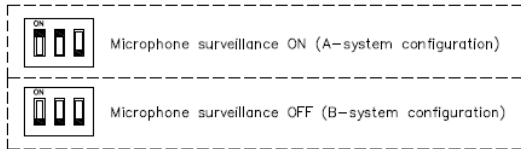
Specifications

GENERAL

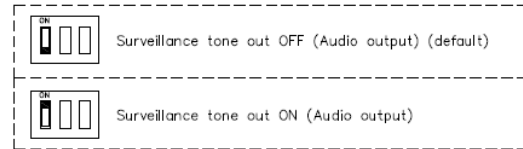
Dimension (WxH)	112 x 115 mm
Mounting	DIN Rail mounting
Housing	ABS
Operation voltage	24 VDC / max. 0,5A
Fault relay contact rating	48VDC / 1A
Contact set	1 pcs. C/NO/NC
Terminals	2.5 mm ²
Weight	0.5 kg
Operating temperature	-15°C to +55°C
Environmental Condition	Protected



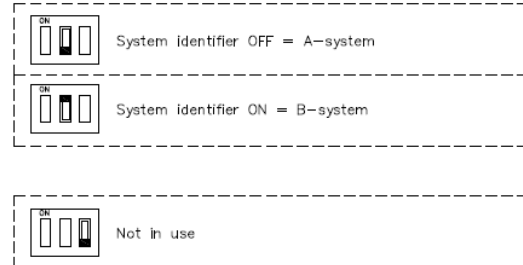
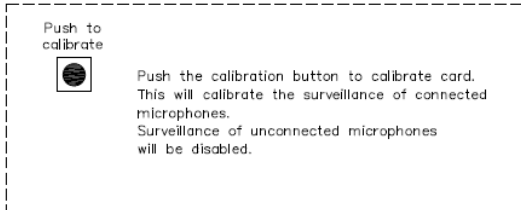
Microphone dipswitch settings:



SW2 settings:



Calibration of card:



Used With



P-1308 Microphone
Station

Item Number: 4000014310