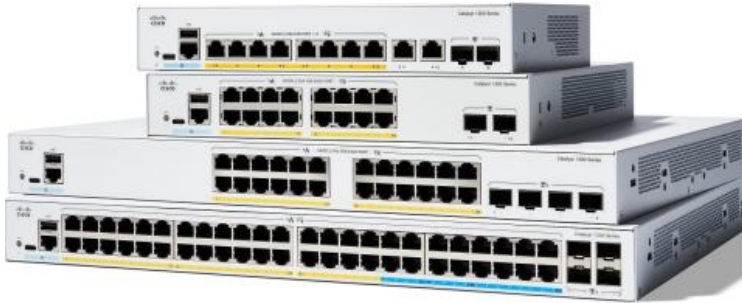


2220012281

## C1300-24T-4X

Cisco C1300 24-port 1G switch with 4x10G SFP



CISCO Certified

## Description

The Cisco Catalyst 1300 Series Switches are fixed, managed, enterprise-class Gigabit Ethernet Layer 3 switches designed for small and medium-sized business and branch offices. These simple, flexible, and secure switches are ideal for deployment out of the wiring closet. The Catalyst 1300 Series operates on customized Linux OS software, with an intuitive dashboard that simplifies network setup and advanced features that accelerate digital transformation, while pervasive security protects business-critical transactions. The 1300 Series switches provide the ideal combination of affordability and capabilities for branches and growing networks and help you create a more efficient, better-connected workforce. When your business needs advanced networking features and security for the digital transformation, yet value is still a top consideration, you're ready for the Cisco Catalyst 1300 Series Switches.

Cisco Catalyst C1300-24T-4X is managed 24-port switch with 24 auto-sensing 10/100/1000 ports and 4x10G SFP+ ports .

# Specifications

## PORTS

10/100/1000 RJ45	24
SFP+	4
Console ports	1x RJ45 and USB type C Port

## ENVIRONMENT

Operating temperature	-5°to 50°C
Operating relative humidity	10% to 90%, relative, non-condensing

## ELECTRICAL CHARACTERISTICS

Frequency	50 to 60 Hz
Maximum heat dissipation	76.4 BTU/hr
AC voltage	100 to 240 VAC
Maximum power Consumption	110V = 22.3W
	220V = 22.4W

## DIMENSIONS & WEIGHT

Dimensions (W x D x H)	445 x 240 x 44 mm
Weight	3.14 kg
Mounting	Rack Mountable, 1HU

# Accessories



### SFP-10G-SR

CISCO 10GBase-SR SFP+  
10GbE transceiver module  
for Multimode fiber



### SFP-10G-LRM

CISCO 10GBase-LRM SFP+  
10GbE transceiver module  
for both multimode and  
single-mode fibers