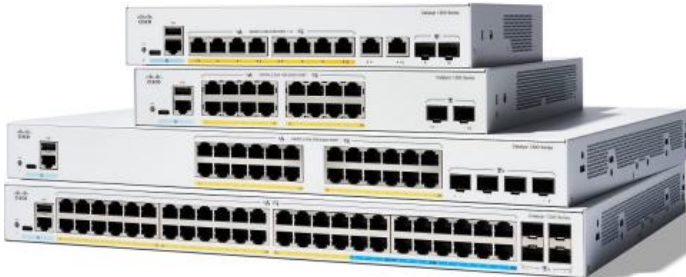


2220012278

C1300-48FP-4X

Cisco C1300 48-port 1G Full PoE switch with 4x10G SFP



CISCO Certified

Description

The Cisco Catalyst 1300 Series Switches are fixed, managed, enterprise-class Gigabit Ethernet Layer 3 switches designed for small and medium-sized business and branch offices. These simple, flexible, and secure switches are ideal for deployment out of the wiring closet. The Catalyst 1300 Series operates on customized Linux OS software, with an intuitive dashboard that simplifies network setup and advanced features that accelerate digital transformation, while pervasive security protects business-critical transactions. The 1300 Series switches provide the ideal combination of affordability and capabilities for branches and growing networks and help you create a more efficient, better-connected workforce. When your business needs advanced networking features and security for the digital transformation, yet value is still a top consideration, you're ready for the Cisco Catalyst 1300 Series Switches.

Cisco Catalyst C1300-48P-4X is managed 48-port Full PoE switch with 48 auto-sensing 10/100/1000 PoE ports and 4x 10G SFP+ ports .

Specifications

PORTS

10/100/1000 RJ45 PoE+	48
SFP+	4
Console ports	1x RJ45 and USB type C Port

ENVIRONMENT

Operating temperature	-5°to 50°C
Operating relative humidity	10% to 90%, relative, non-condensing

ELECTRICAL CHARACTERISTICS

Frequency	50 to 60 Hz
Maximum heat dissipation	2983.99 BTU/hr
AC voltage	100 to 240 VAC
Available PoE Power	740W
Maximum power Consumption	110V = 874.52W
	220V = 831.71W

DIMENSIONS & WEIGHT

Dimensions (W x D x H)	445 x 350 x 44 mm
Weight	5.16 kg
Mounting	Rack Mountable, 1HU

Accessories



SFP-10G-SR

CISCO 10GBase-SR SFP+
10GbE transceiver module for
Multimode fiber



SFP-10G-LR

CISCO 10GBase-LR SFP+
10GbE transceiver module for
single-mode fibers