

2131000159

HP-6CT-MED

Horn Loudspeaker, 100V, IP67, 6W



- ✓ 70V / 100V
- ✓ Tapping: 0,5W - 1,5W - 3W - 6W
- ✓ MED Approved



MED Certification



Onboard communication



IP67

Description

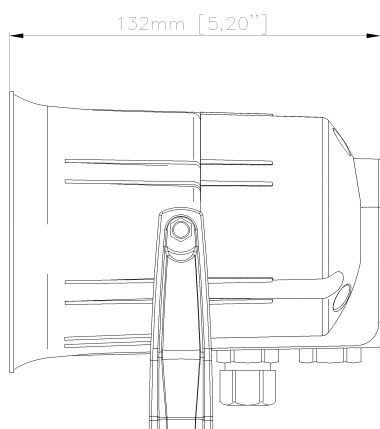
- ✓ General purpose 6W horn loudspeaker
- ✓ Especially suitable for use in industrial sites or tough environments

Installation, Operation and Maintenance Procedures

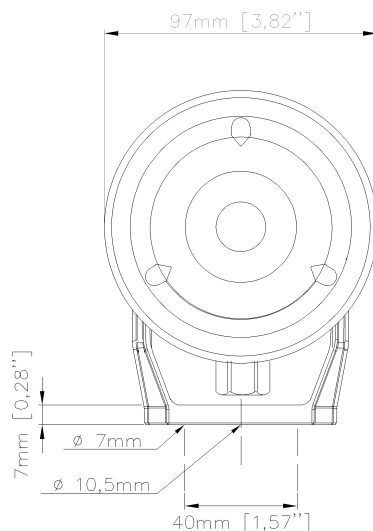
- ✓ Remove the lid and lead cable through the cable gland.
- ✓ Connect to terminal 70V: white-green or 100V: white-red.
- ✓ Select the required power by changing the position of the black wire connected to the transformer; choose according to the label inside the loudspeaker.
- ✓ Fasten bracket with 1-3 screws.

- ✓ Fasten the lid with a torque of 1.5 Nm.
- ✓ To change the loudspeaker's position, please adjust the bracket (by loosening/tightening the screws) as required.
- ✓ For optimum performance, always use the correct voltage/power and operate within the frequency limits as stated.

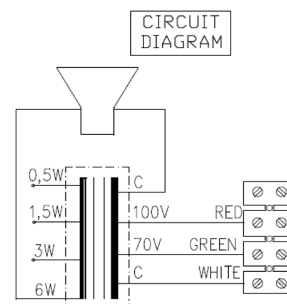
Technical Dimensions



1xM20 cable gland
1xM20 blanking plug
cable diameter 6 – 12mm



All outside nuts and
screws in stainless steel



Specifications

GENERAL

Material / Color	Polyamide / RAL 7035
Dimensions	Ø97 x 132D mm
Mounting	Bracket
Termination	Internal screw terminals
Weight	0.6 kg
Rated power	6 W
SPL 1W / 1 m	100 dB
SPL rated power	107 dB
Effective frequency range	300 - 20000 Hz
Dispersion (-6dB) 1kHz / 4kHz	178° / 62°
IP-rating	67
Max. / min. ambient temperature	110°C / -40°C
Environmental Condition	Exposed