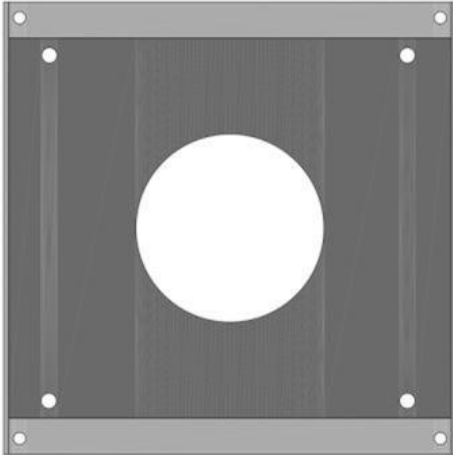


2340110053

## SPA-M6BOKS-MED

Wall-mount box for SPA-M1/M6 and VM15/50-RD panels - MED



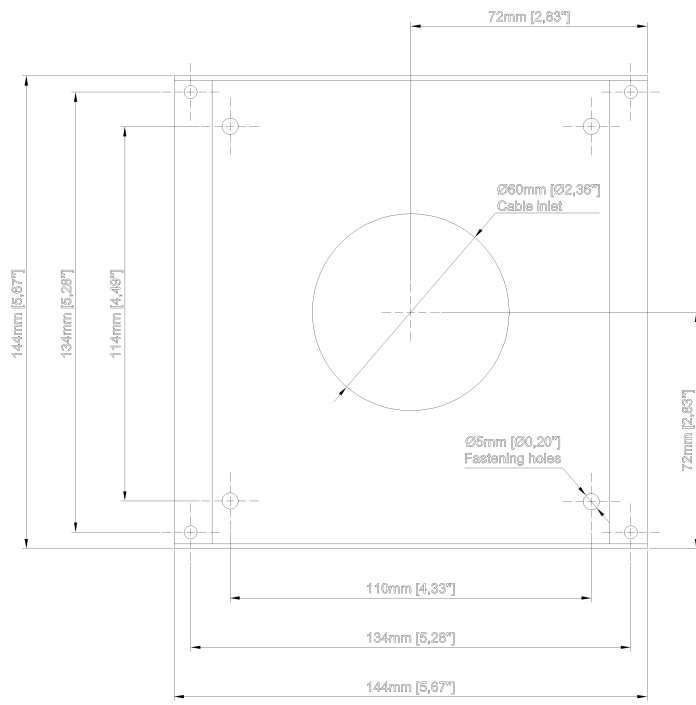
---

### Description

- ✓ Wall mounting box for SPA-M1/SPA-M6 PA-panels and volume controls VM-15RD/VM-50RD.
- ✓ For SPA public address and general alarm systems.
- ✓ Designed for indoor use

### Technical Dimensions

## FRONT VIEW



## SIDE VIEW



# Specifications

## GENERAL

|              |                          |
|--------------|--------------------------|
| Size (WxHxD) | 144 x 144 x 82           |
| Weight       | 0.3 kg                   |
| Material     | Black anodized aluminium |
| Mounting     | 4x4 mm screws            |

## Used With



SPA-M1-V2



SPA-M1-D



SPA-M6-V2



SPA-M6-D



VM15-RD

Dual Volume Control 4 Wire  
Override 2x15W



VM15-RDF

Dual Volume Control 4 Wire  
Failsafe Override 2x15W



VM50-RD

Dual Volume Control 4 Wire  
Override 2x50W



VM50-RDF

Dual Volume Control 4 Wire  
Failsafe Override 2x50W



SPA-PROG4-RDF

Entertainment program selector  
dual failsafe.