

Printing Instructions:

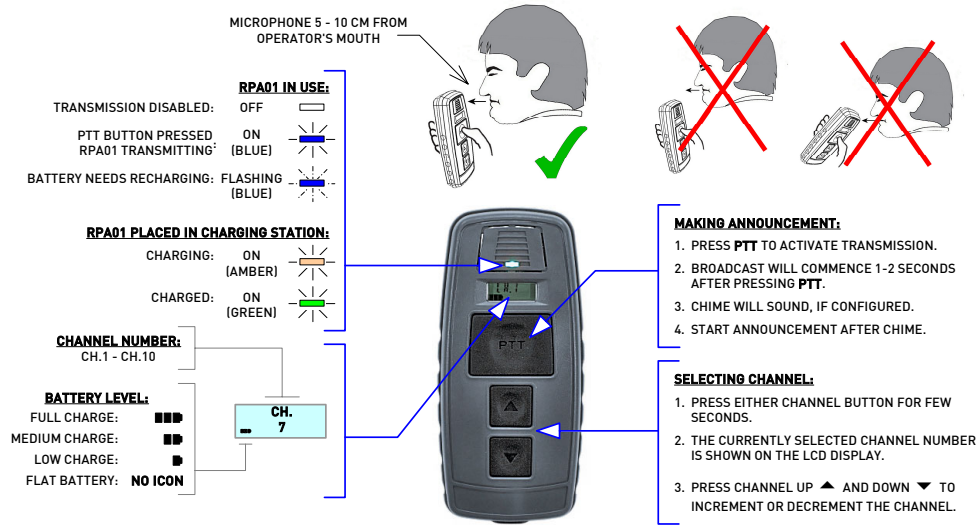
- 1) You will need a double-sided printer.
- 2) From Acrobat Reader (8.0 or later) menu, select **File>Print**.
- 3) Set **Print** parameters as follows:
 - a. **Print Range: All**
Subset: All Pages in Range
 - b. **Page Scaling: None**
 - c. Select the **Auto-Rotate and Center** option.
- 4) Select a printer, and press **Properties**.
- 5) Set printer properties as follows:
 - a. **Orientation: Landscape**
 - b. **Print on Both Sides:** depending on the printer type, select **Flip on Short Edge** or deselect **Flip Pages Up** option.
 - c. Set **Booklet Layout** to **Off**, if available.
 - d. **Page Order: Front to Back**
 - e. **Pages per Sheet: 1**
- 6) Print the document.
- 7) Cut out the cards using the trim marks on the front page.

The rear page image has a bleeding area of approximately 3 mm.
- 8) Laminate each instruction card, as required.

Each card fits into an A6-size laminating pouch.

RPA01 RADIO MICROPHONE TRANSMITTER

INSTRUCTIONS FOR USE



Application Solutions (Safety and Security) Ltd.
Unit 17 - Cliffe Industrial Estate - Lewes - East Sussex - BN8 6JL - UK - Tel: +44(0)1273 405411 - Fax: +44(0)1273 405415
www.asl-control.co.uk
U-0618-0156.doc Issue: 03 <complete, approved> 06/08/10

Note: Rear trim marks to be used for single side printing, i.e. front and rear pages printed on separate sheets.

