

## EN54 BASS REFLEX CEILING SPEAKER

- BASS REFLEX
- 30W 100V LOUDSPEAKER
- 6.5" (165MM)
- QUICK MOUNT
- WEATHERPROOF TO IP21C
- IMPACT RESISTANT ABS
- EXCELLENT SOUND QUALITY
- FULLY CERTIFIED TO EN54-24



### OVERVIEW

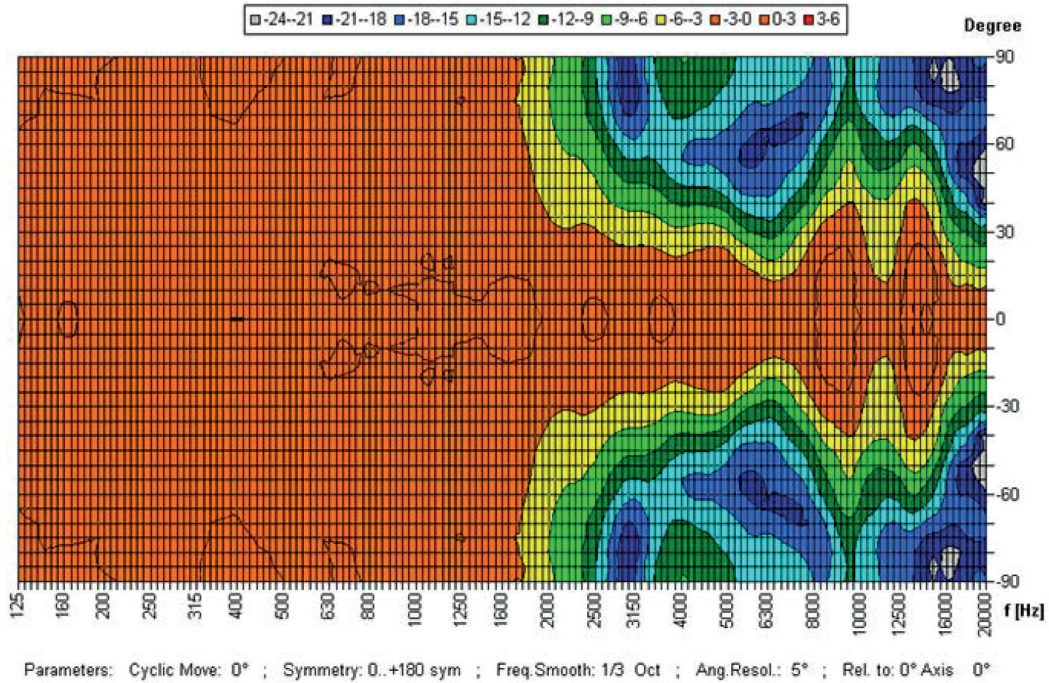
The SPCB-30W-65-EN54 is a 30W 100V 2-way bass reflex ceiling loudspeaker with neodymium tweeter. It has a 6.5" (165mm) loudspeaker chassis providing excellent sound quality for speech and background music. Certified to EN54-24 the speaker is fitted with a 100V transformer with four power level adjustment tapings of 30W, 15W, 7.5W and 3.75W. Low impedance operation is also possible.

The impact-resistant ABS housing in RAL 9016 guarantees long-term stability. For additional reliability, a thermal fuse and a strain relief fitting are provided. The speaker is protected to class IP 21C and the speaker chassis is treated against damp. Easy installation is made possible through a simple screw mounting system.

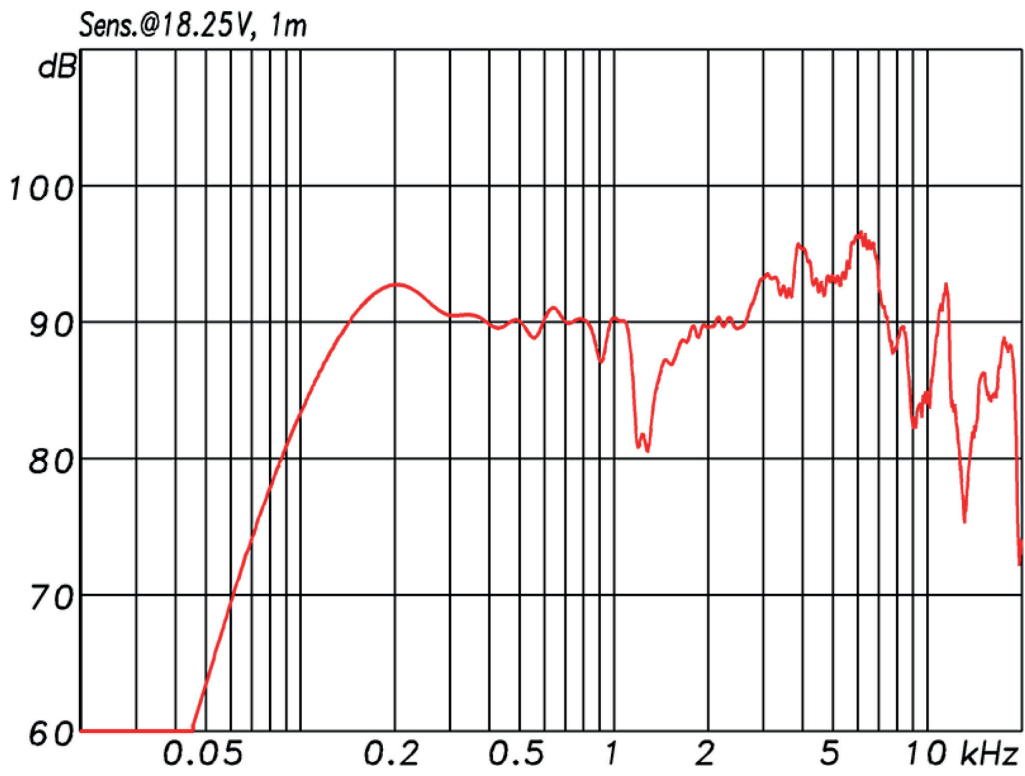
The loudspeaker is optionally available with a DC blocking capacitor fitted, in order to provide compatibility with DC loudspeaker line monitoring systems. The part number for this DC monitoring compatible version is SPCB-30W-65-EN54.

EASE data is available for this speaker on request.

POLAR DIAGRAM



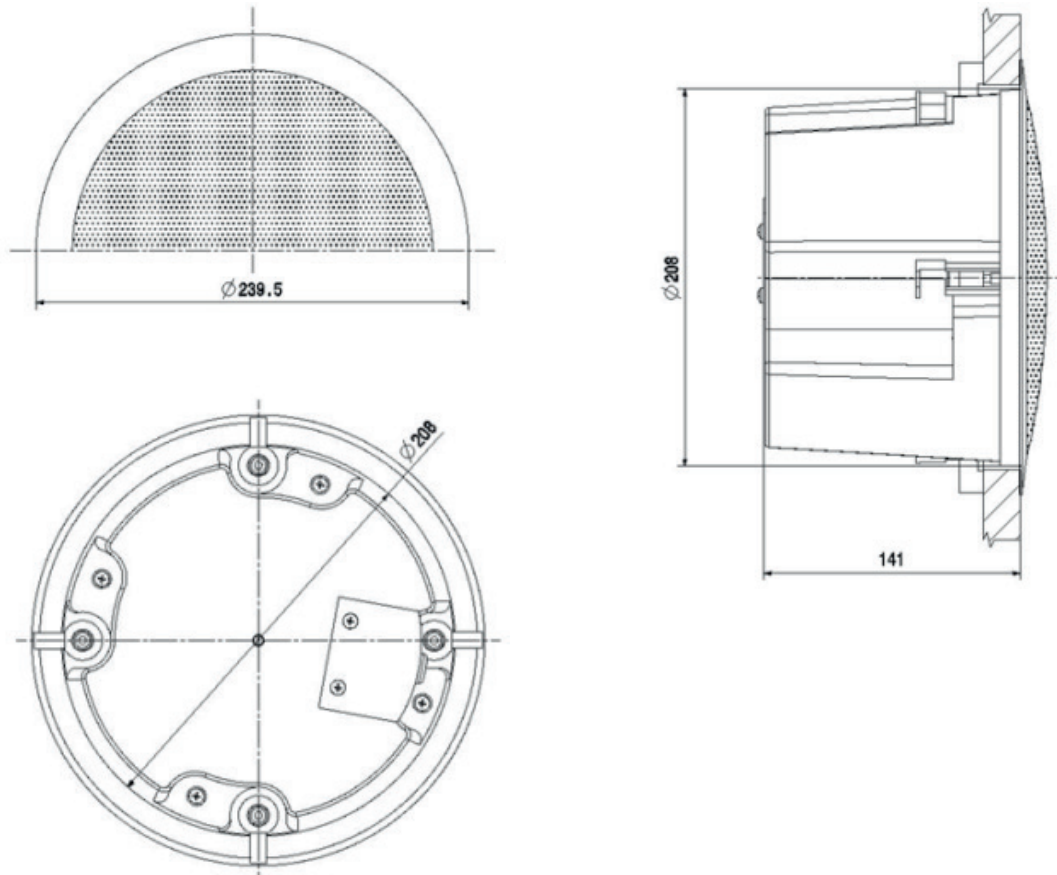
FREQUENCY RESPONSE DIAGRAM



**PRODUCT ATTRIBUTES**

Description	SPCB-30W-65-EN54
Power	30 / 15 / 7.5 / 3.75 (8) W
Impedance (100V)	333 / 667 / 1333 / 2667 ohm
Frequency Range	87 – 19,300 Hz
Frequency Response	100 – 19,200 Hz
SPL 1W/1m, peak	95.5 dB
SPL , 1W/4m, peak	83.5 dB
SPL Pmax/4m, peak	98.2 dB
Sensitivity EN54-24, 1W/4m	77.8 dB
Sensitivity IEC 268-5, 1W/1m	89.8 dB
Dispersion -6dB, 500Hz	180°
Dispersion -6dB, 1KHz	180°
Dispersion -6dB, 2KHz	115°
Dispersion -6dB, 4KHz	62°
Dimensions	239.5 x 141mm
IP Rating	IP21
Weight (net)	2.27 kg
Ceiling Cut-out	210mm
Temperature range	-20 / +80 °C
Mounting	Quick-mount clamps
Connector	4-pin screw terminal
Maximum cable cross section	4.9mm <sup>2</sup>
Max. cable cross section loop	2 x 4.9mm <sup>2</sup>
Colour	RAL 9016

DIMENSIONAL DIAGRAM



Measurements according to DIN IEC 268-5

RoHS compliant (2011/65/EU)



This equipment is designed and manufactured to conform to the following EU Directives:  
 Electromagnetic Compatibility (EMC): 2014/30/EU  
 Low Voltage: 2014/35/EU  
 Restriction of Hazardous Substances (RoHS): 2011/65/EU

**Manufacturer:**

Application Solutions (Safety and Security) Limited  
 Unit 17 - Cliffe Industrial Estate - Lewes - East Sussex - BN8 6JL - U.K.

Tel: +44 (0) 1273 405411

[www.asl-control.co.uk](http://www.asl-control.co.uk)

All rights reserved.

Information contained in this document is preliminary, no representation or warranty is given and Application Solutions (Safety and Security) Limited assumes no liability with respect to the accuracy of such information.



Assessed to ISO 9001  
 LPCB Cert No: C1043