

- Round Frameless Ceiling Loudspeaker
- 6W 100V
- Size 5" (130 mm)
- Quick mount
- Quick connection with Wago 221 connectors
- Weatherproof to IP21
- Full range sound quality
- Option with DC capacitor fitted
- EN 54-24 certified



OVERVIEW

The SPCR-06W-50-EN54 is a 6W 100V round frameless ceiling mount loudspeaker, which has a 5" (130mm) full-range chassis providing excellent sound quality with speech and background music, and which is certified to EN 54-24. The speaker is fitted with a 100V transformer which has three power adjustment tapings of 6W, 3W, and 1.5W.

The SPCR-06W-50-EN54 has a powder coated metal chassis and grille, with the high quality finish giving good long-term protection and resistance to corrosion. The speaker is supplied with a rear fire dome, and its enclosure is ingress protection rated to IP21. As standard the speaker is coloured to match RAL9016 'Traffic White', however the speakers can be supplied in any four-digit RAL or NCS colour, as a special order.

Quick connections using the WAGO 221 connectors and easy ceiling mounting is provided through the use of spring clamps, for use with a possible ceiling thickness of between 1mm and 45mm. The 100V loudspeaker line cabling is fed through rubber grommets in the fire dome and is connected to the speaker by means of the WAGO 221 connectors. For additional reliability, the speaker chassis features vibration-damping construction.

Please note that although very thin ceilings can be used as a mounting surface, it should be ensured that the ceiling thickness and strength are appropriate to the weight of the speaker, and to the thickness and weight of the 100V line cable.

The loudspeaker is optionally available with a DC blocking capacitor fitted, providing compatibility with DC loudspeaker line monitoring systems. The part number for this DC monitoring compatible version is SPCR-06W-50-EN54-DC.

Enhanced Acoustic Simulator for Engineers (EASE) data is available for this speaker on request.

TECHNICAL DATA

Power Tappings	6W / 3W / 1.5W
Impedance (100V)	1667 / 3333 / 6667 ohm
DC Capacitor (SPCR-06W-50-EN54-DC Version only)	2.2 μ F, 250V
Frequency Range	80 - 20,000 Hz
Frequency Response	64 - 21,500 Hz
SPL 1W / 1m, peak	97,0 dB
SPL 1W / 4m, peak	85,0 dB
SPL Pmax / 4m, peak	92,7 dB
SPL IEC 60268-5, 1W/1m	90,0 dB
SPL IEC 60268-5, Pmax/1m	97,8 dB
SPL EN 54-24, Pmax/4m	85,0 dB
Sensitivity EN 54-24, 1W / 4m	78,0 dB
Dispersion (-6dB, 500Hz) Horizontal / Vertical Plane*	180° (horizontal) / 180° (vertical)
Dispersion (-6dB, 1KHz) Horizontal / Vertical Plane*	180° (horizontal) / 180° (vertical)
Dispersion (-6dB, 2KHz) Horizontal / Vertical Plane*	150° (horizontal) / 150° (vertical)
Dispersion (-6dB, 4KHz) Horizontal / Vertical Plane*	75° (horizontal) / 75° (vertical)
Temperature Range	-10 / +55 °C
Dimensions	180 x 99mm
IP Rating	IP21
Weight (net)	0.78 kg
Colour	RAL9016
Connector	WAGO 221 connector
Mounting	Spring Clamp
Maximum Cable Passage	4mm ²
Compliance	EN 54-24

* EN 54-24 Definitions for Speaker Reference Axis, Point, Plane + Horizontal & Vertical Planes:

- ☐ Reference Axis: Axis is through the centre of the speaker grille surface and is perpendicular to the grille surface.
- ☐ Reference Plane: Plane is across the front of the speaker grille surface and is perpendicular to the reference axis.
- ☐ Horizontal Plane: Plane contains the reference axis and is perpendicular to the reference plane.
- ☐ Vertical Plane: Plane contains the reference axis and is perpendicular to the reference plane.
- ☐ Reference Point: Point is at the centre of the front of the speaker grille surface where all the above intersect.

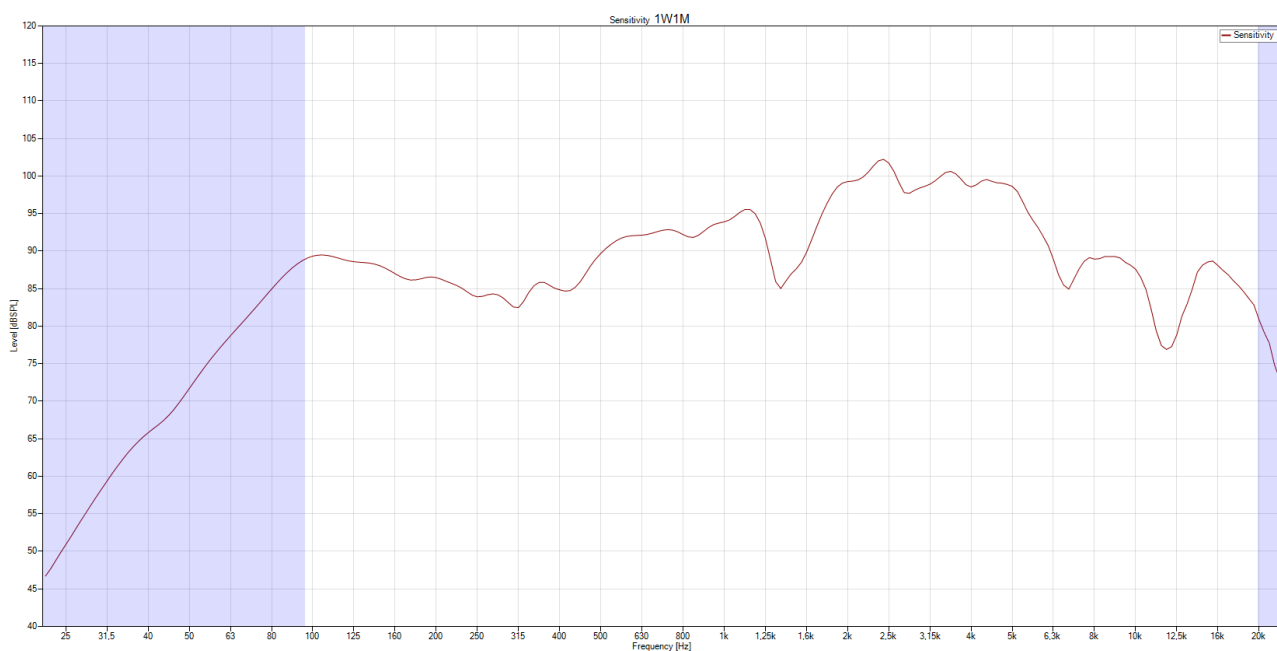
All measurements in the table above relate to the Reference Axis unless otherwise stated

EN 54-24 Annex A, Measurement Environments:

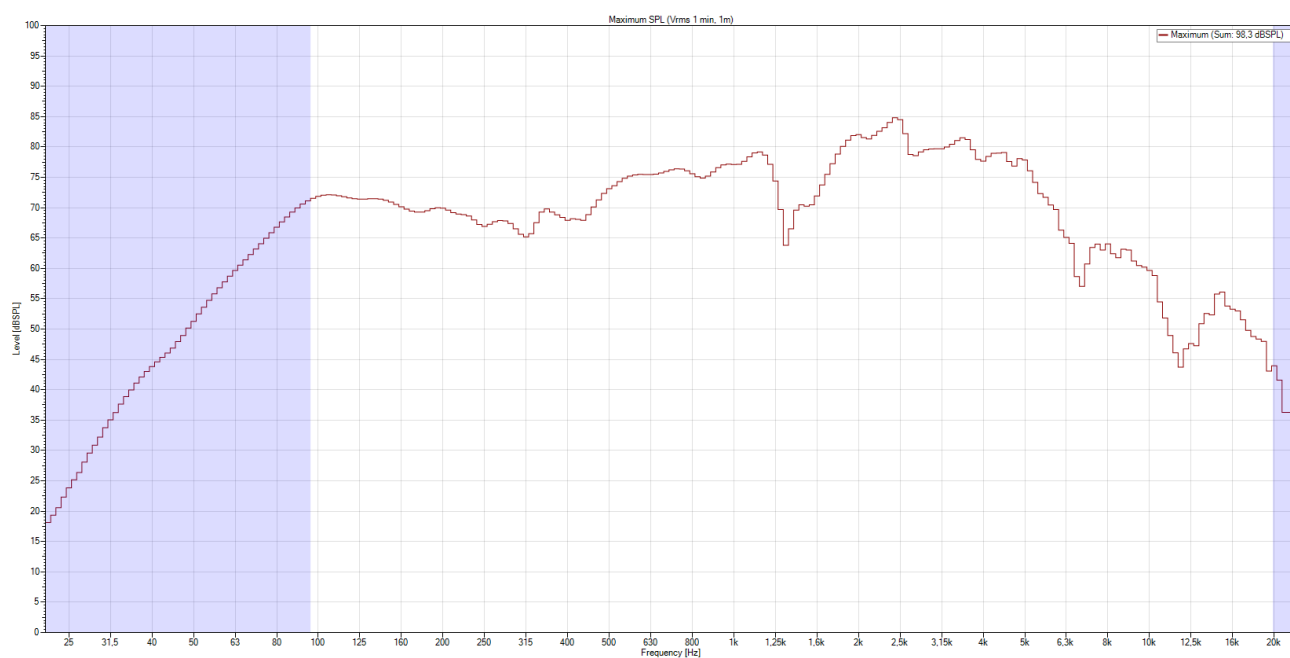
Flush-mounted loudspeakers e.g. ceiling loudspeakers, shall be measured under half-space free field conditions.

All other speakers shall be measured under free-field conditions or in a ground plane arrangement that simulates a free-field condition.

FREQUENCY RESPONSE DIAGRAM—SENSITIVITY 1W / 1m

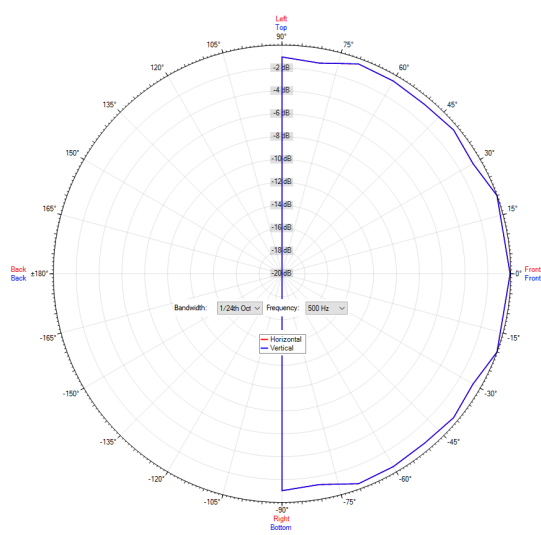


FREQUENCY RESPONSE DIAGRAM—MAXIMUM SPL (Vrms 1 min, 1m)

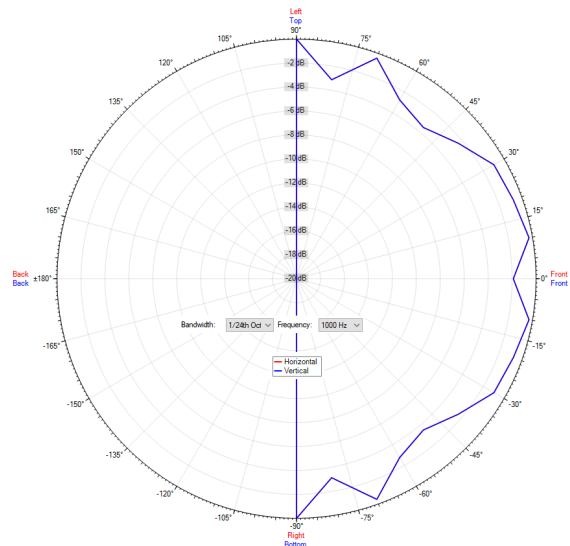


POLAR DIAGRAMS

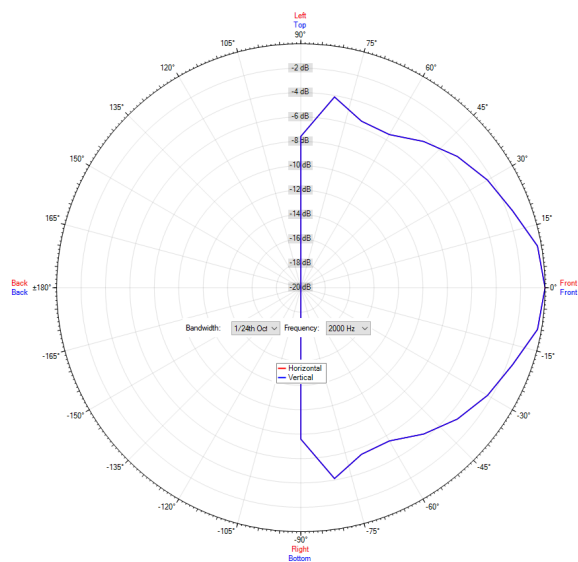
500 Hz



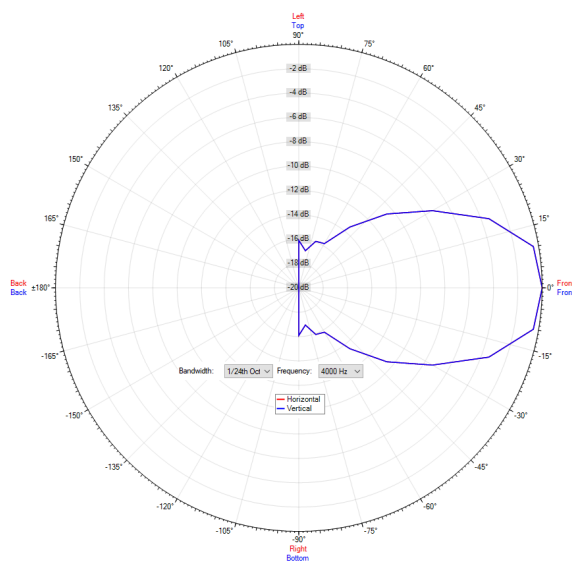
1,000 Hz



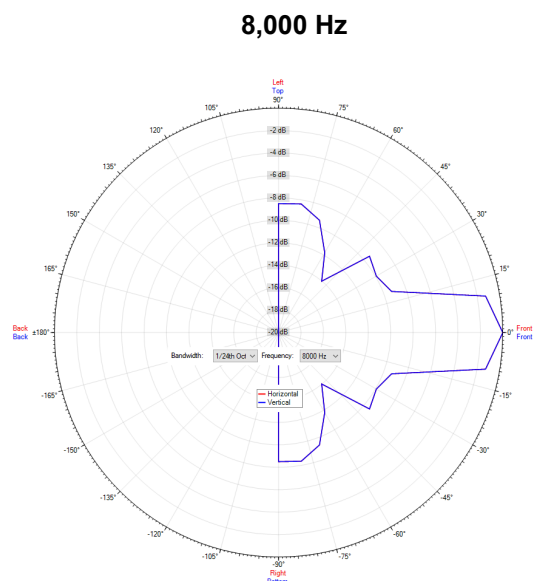
2,000 Hz



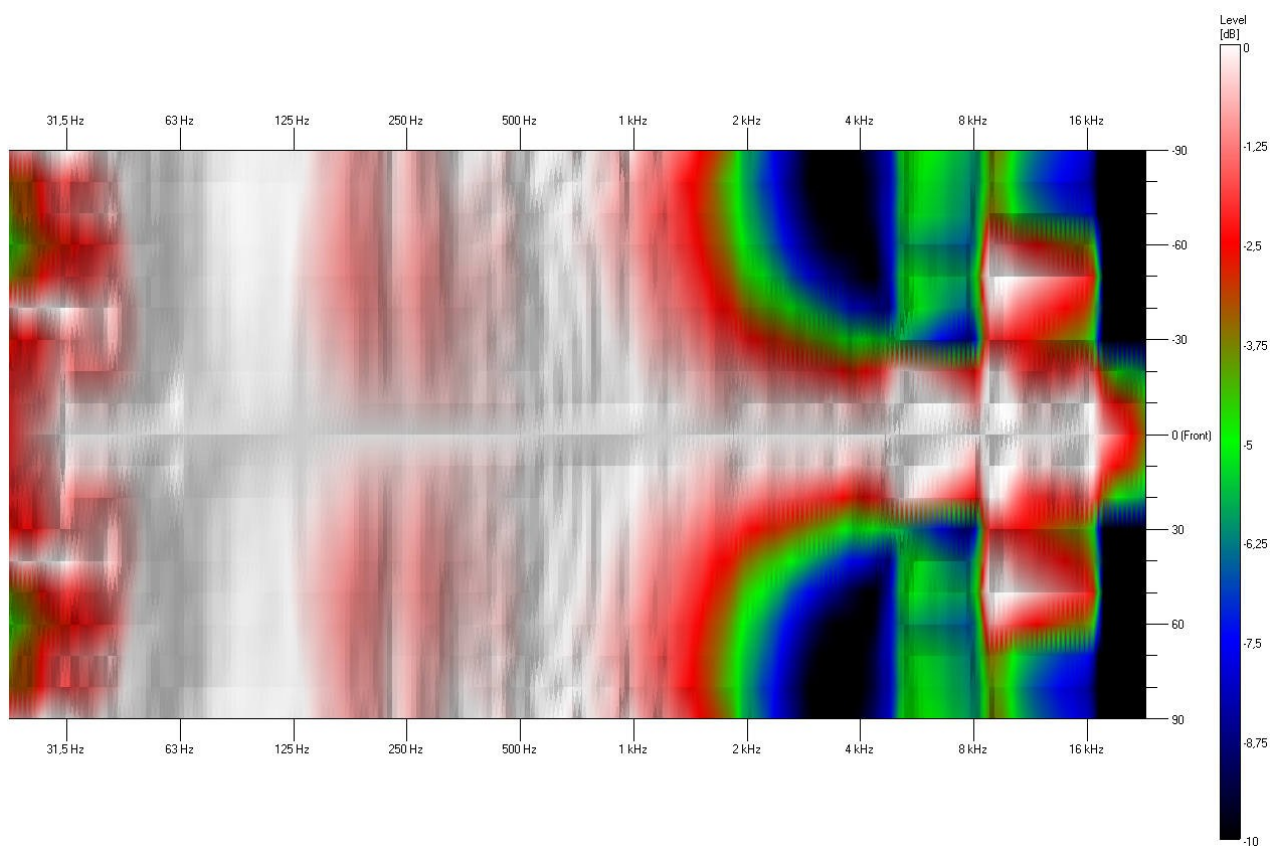
4,000 Hz



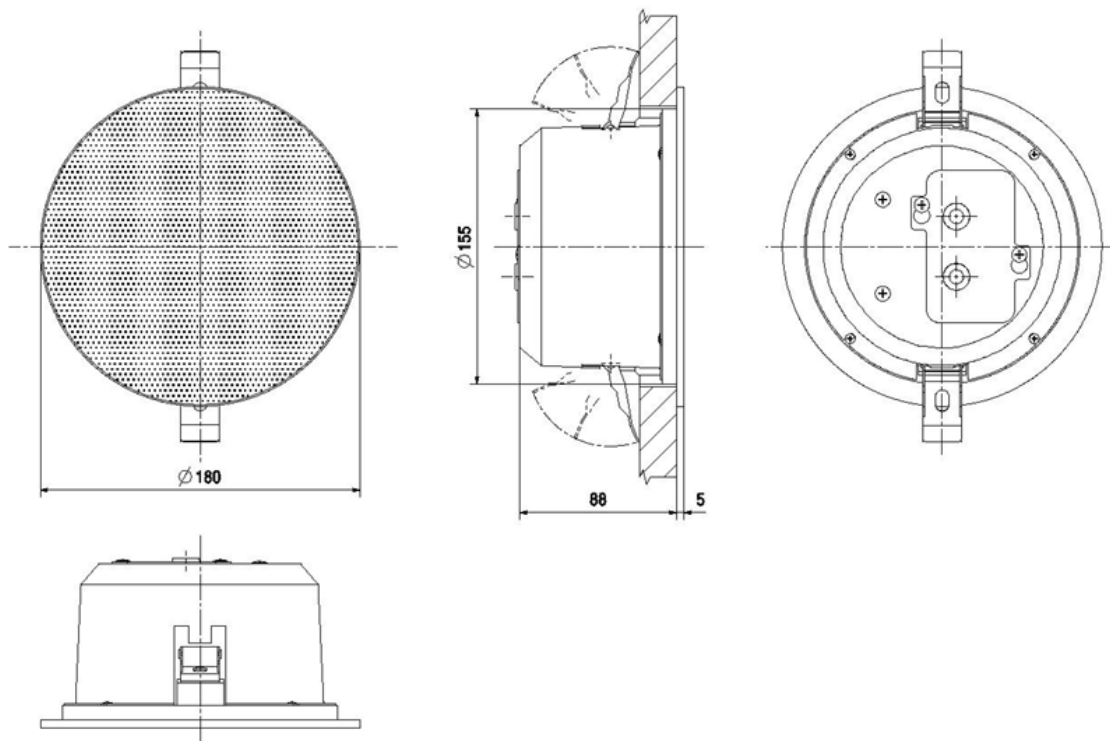
POLAR DIAGRAM



ISOBAR



DIMENSIONAL DIAGRAM



This equipment is designed and manufactured to conform to the following EU Directives:



Low Voltage: 2014/35/EU

Restriction of Hazardous Substances (RoHS): 2011/65/EU & 2015/863/EU

Made for:

Zenitel GB Limited

Unit 17 - Cliffe Industrial Estate - Lewes - East Sussex - BN8 6JL - U.K.

www.zenitel.com

Zenitel and its subsidiaries assume no responsibility for any errors that may appear in this publication, or for damages arising from the information therein. Zenitel, Vingtor-Stentofon and Phontech products are developed and marketed by Zenitel. The company's Quality Assurance System is certified to meet the requirements in NS-EN ISO 9001. Zenitel reserves the right to modify designs and alter specifications without notice. ZENITEL PROPRIETARY. This document and its supplementing elements, contain Zenitel or third party information which is proprietary and confidential. Any disclosure, copying, distribution or use is prohibited, if not otherwise explicitly agreed in writing with Zenitel. Any authorized reproduction, in part or in whole, must include this legend. Zenitel – All rights reserved.