

- Wall Loudspeaker
- 6W 100V
- Size 6.5" (165mm)
- Flush mount
- Softline-design
- Dustproof to IP21C
- Full range sound quality
- Option with DC capacitor fitted
- Certified to EN 54-24



## OVERVIEW

The SPRF-06W-65-EN54 is a 6W 100V flush mount loudspeaker which has a 6.5" (165mm) full-range chassis providing excellent sound quality with speech and background music, and which is certified to EN 54-24. The speaker is fitted with a 100V transformer which has three power tapings of 6W, 3W and 1.5W.

The SPRF-06W-65-EN54 has a sturdy front grill made of steel, a shock-resistant ABS front panel and a high-impact rear housing, which provides a low resonance sound. The enclosure is ingress protection rated to IP21C. The 100 V loudspeaker line cabling is connected to a two-pin ceramic terminal block. For additional reliability, a thermal fuse is fitted, and the loudspeaker chassis is moisture-resistant. The loudspeaker is also compliant with British Standard BS 5839, Part 8.

The speaker is designed to be flush mounted in walls or suitable ceilings.

The loudspeaker is optionally available with a DC blocking capacitor fitted, in order to provide compatibility with DC loudspeaker line monitoring systems. The part number for this DC monitoring compatible version is SPRF-06W-25-EN54-DC.

Enhanced Acoustic Simulator for Engineers (EASE) data is available for this speaker on request.

## TECHNICAL DATA

|   |                                     |
|---|-------------------------------------|
| Power Tappings  | 6W / 3W / 1.5W                      |
| Impedance (100V)                                      | 1667 / 3333 / 6667 ohm              |
| DC Capacitor (SPRF-06W-65-EN54-DC Version only)       | TBD                                 |
| Frequency Range                                       | 93 — 23,500 Hz                      |
| Frequency Response                                    | 72 — 23,500 Hz                      |
| SPL 1W/1m, peak                                       | 99,1 dB                             |
| SPL 1W/4m, peak                                       | 87,1 dB                             |
| SPL Pmax/4m, peak                                     | 94,8 dB                             |
| SPL IEC 60268-5 1W/1m                                 | 92,0 dB                             |
| SPL IEC 60268-5 Pmax/1m                               | 99,8 dB                             |
| SPL EN 54-24 Pmax / 4m                                | 89,0 dB                             |
| Sensitivity EN 54-24 1W / 4m                          | 80,0 dB                             |
| Dispersion (-6dB, 500Hz) Horizontal / Vertical Plane* | 180° (horizontal) / 180° (vertical) |
| Dispersion (-6dB, 1KHz) Horizontal / Vertical Plane*  | 180° (horizontal) / 170° (vertical) |
| Dispersion (-6dB, 2KHz) Horizontal / Vertical Plane*  | 120° (horizontal) / 130° (vertical) |
| Dispersion (-6dB, 4KHz) Horizontal / Vertical Plane*  | 50° (horizontal) / 60° (vertical)   |
| Temperature range                                     | -10 / +55°C                         |
| Dimensions  | 255 x 195 x 88 mm                   |
| IP Rating   | IP21                                |
| Weight (net)  | 1.40 kg                             |
| Connector   | 2-pin ceramic block                 |
| Mounting  | Flush mounting                      |
| Maximum Cable Passage                                 | 8mm <sup>2</sup>                    |
| Colour  | White                               |
| Compliance  | EN 54-24 / BS 5839, Part 8          |

### \* EN 54-24 Definitions for Speaker Reference Axis, Point, Plane + Horizontal & Vertical Planes:

- Reference Axis: Axis is through the centre of the speaker grille surface and is perpendicular to the grille surface.
- Reference Plane: Plane is across the front of the speaker grille surface and is perpendicular to the reference axis.
- Horizontal Plane: Plane contains the reference axis and is perpendicular to the reference plane.
- Vertical Plane: Plane contains the reference axis and is perpendicular to the reference plane.
- Reference Point: Point is at the centre of the front of the speaker grille surface where all the above intersect.

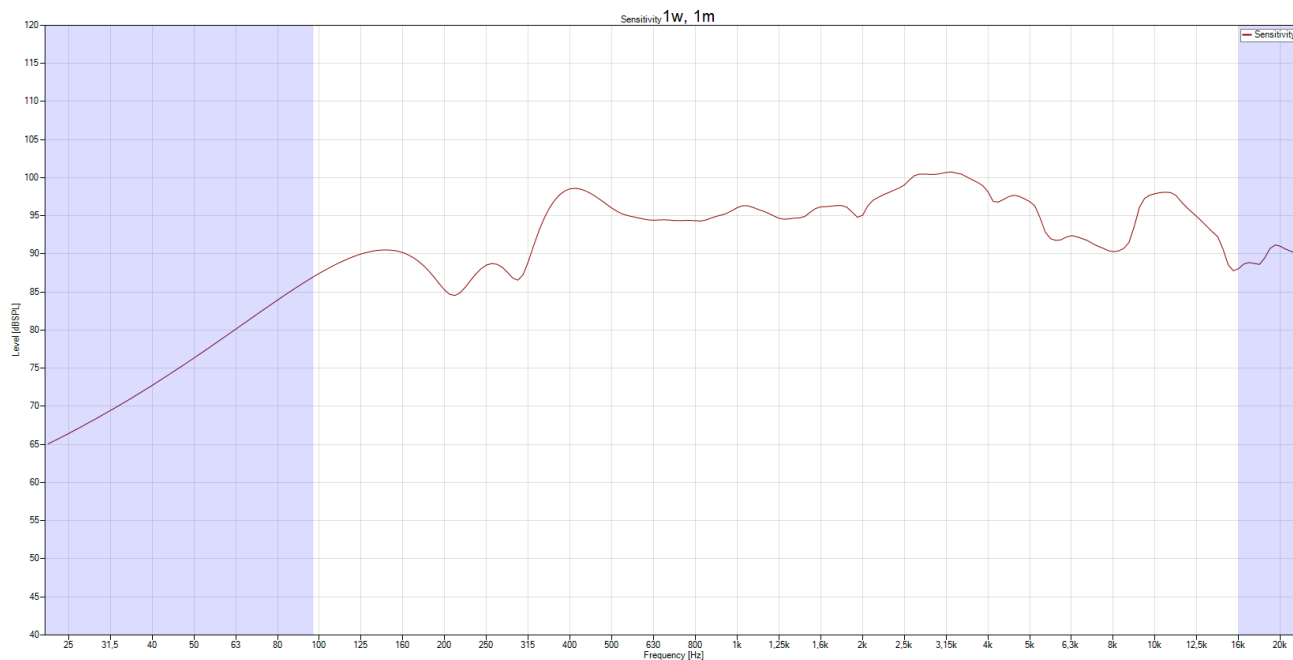
All measurements in the table above relate to the Reference Axis unless otherwise stated

### EN 54-24 Annex A, Measurement Environments:

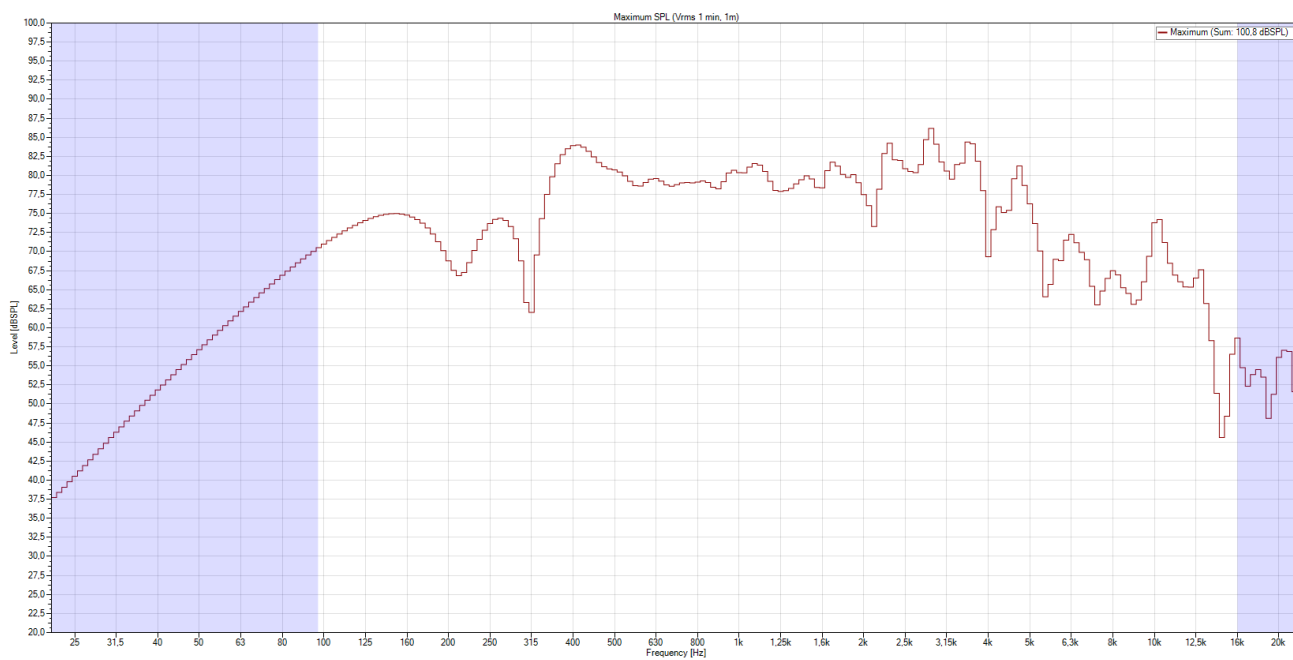
Flush-mounted loudspeakers e.g. ceiling loudspeakers, shall be measured under half-space free field conditions.

All other speakers shall be measured under free-field conditions or in a ground plane arrangement that simulates a free-field condition.

## FREQUENCY RESPONSE DIAGRAM—SENSITIVITY 1W / 1m

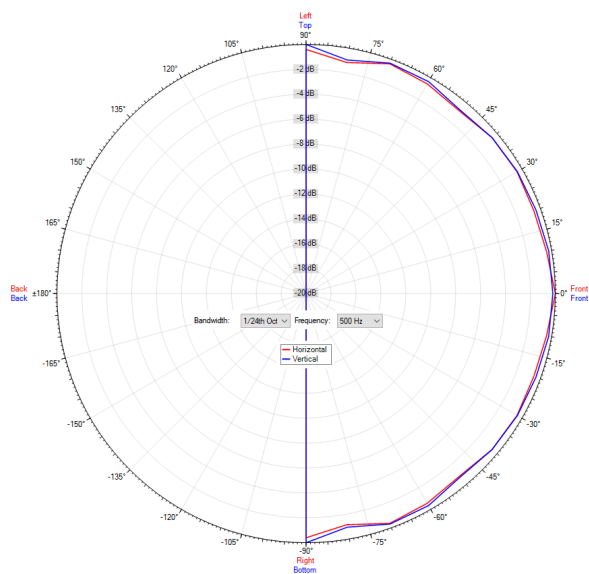


## FREQUENCY RESPONSE DIAGRAM—MAXIMUM SPL (Vrms 1 min, 1m)

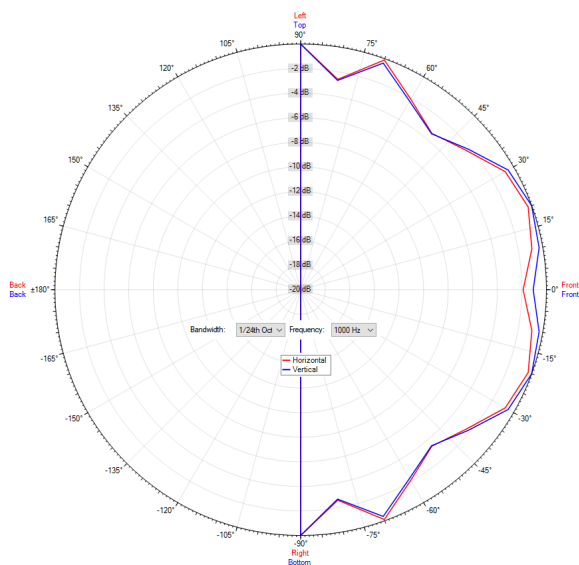


## POLAR DIAGRAMS

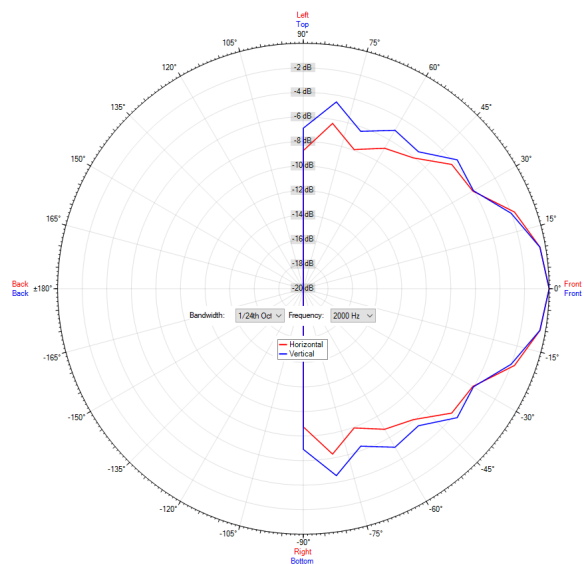
500 Hz



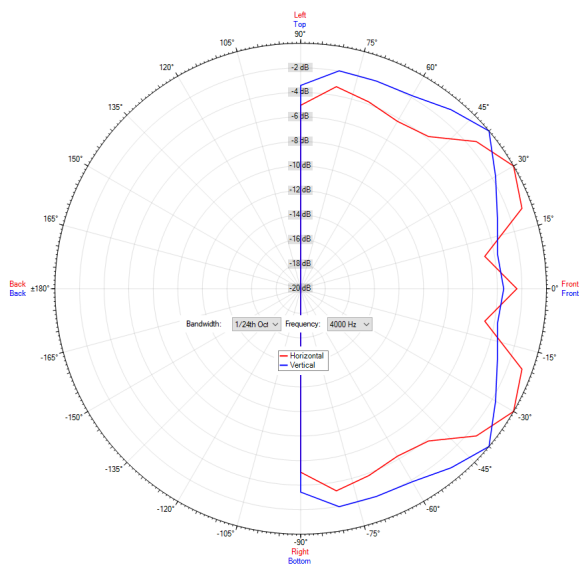
1,000 Hz



2,000 Hz

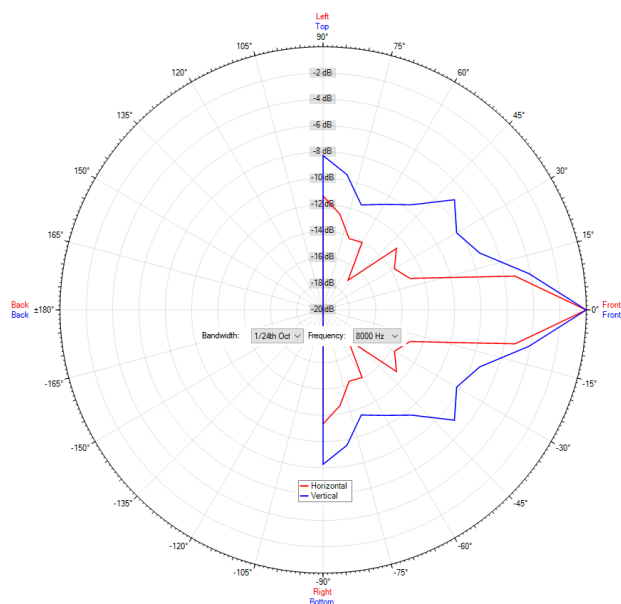


4,000 Hz

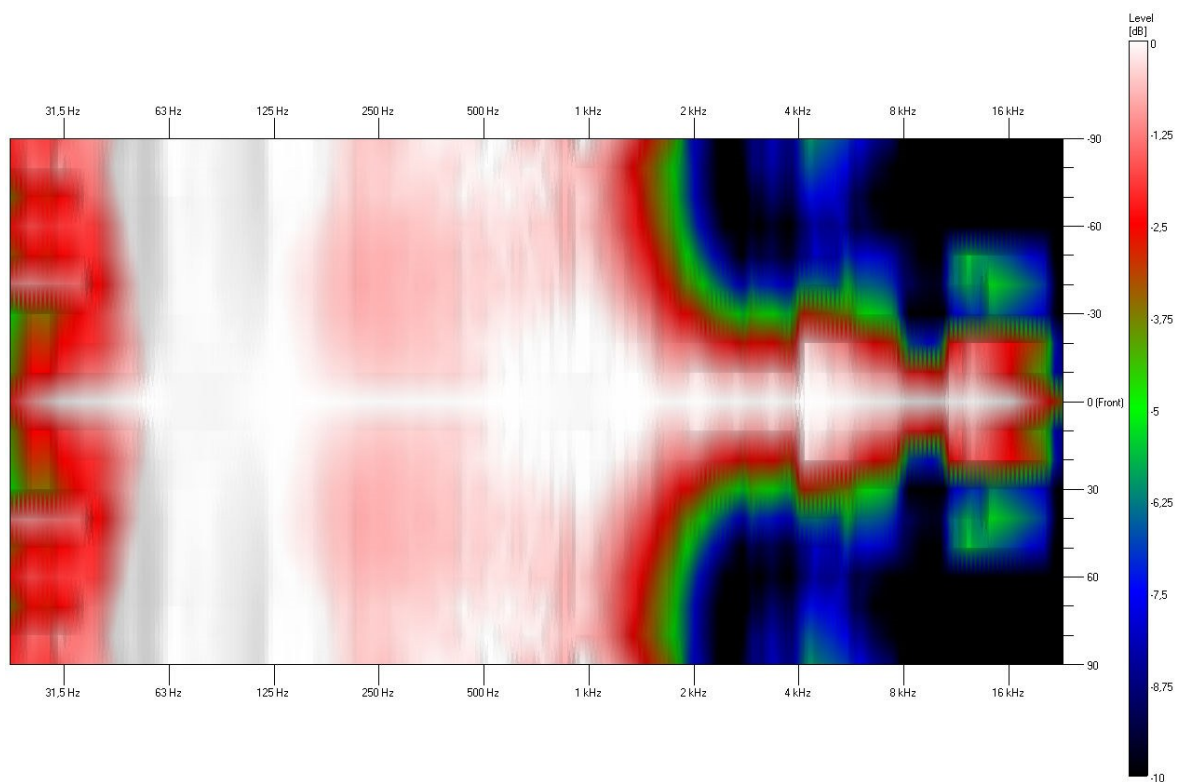


## POLAR DIAGRAMS

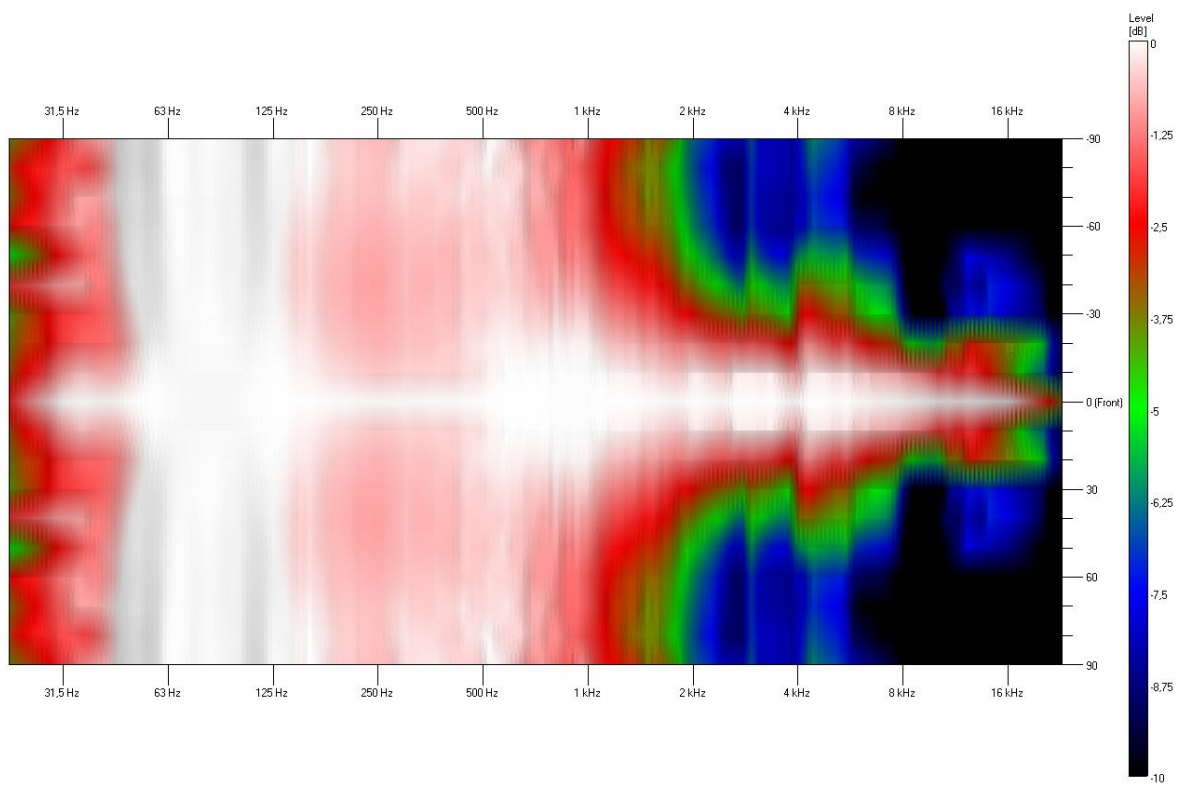
8,000 Hz



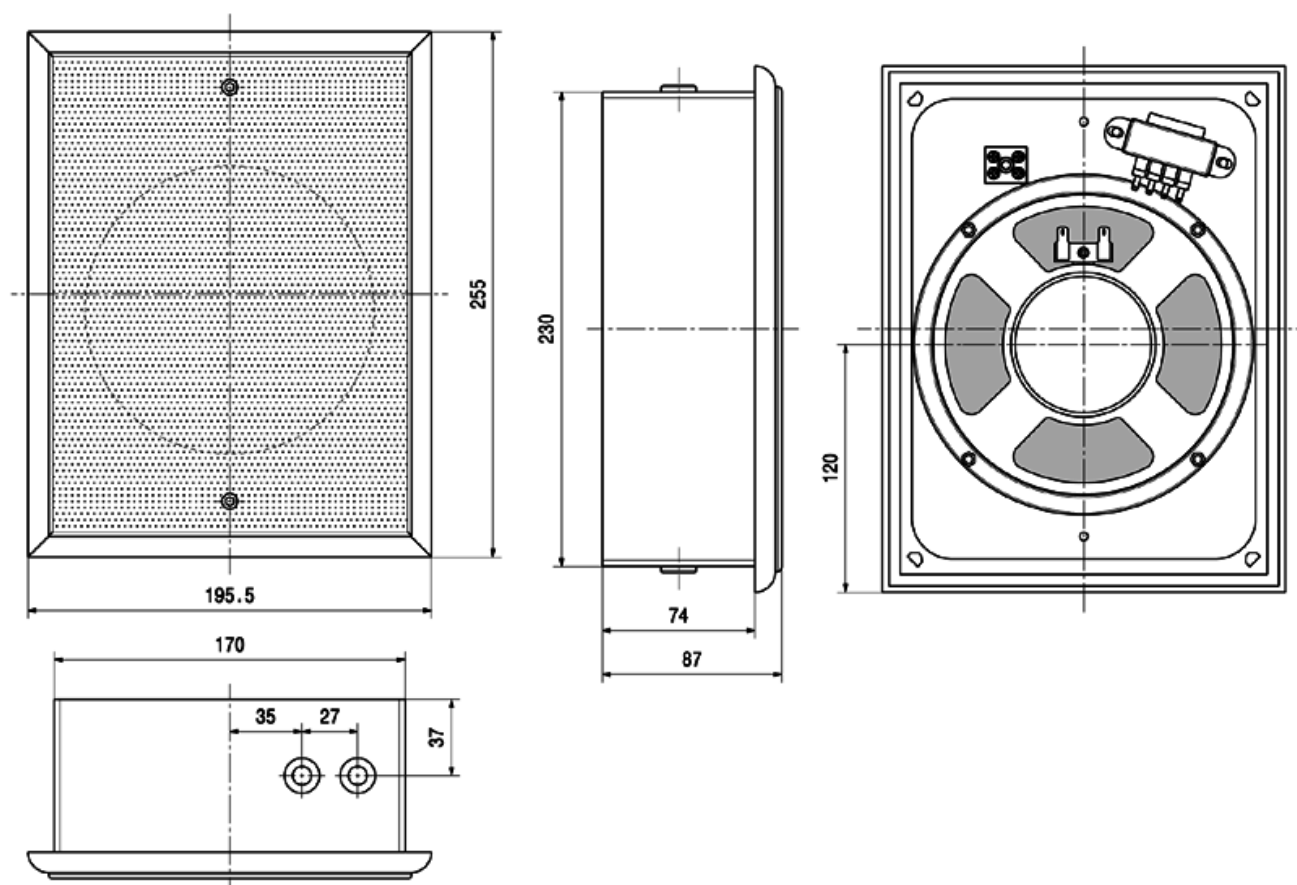
## ISOBAR - HORIZONTAL



## ISOBAR - VERTICAL



## DIMENSIONAL DIAGRAM



This equipment is designed and manufactured to conform to the following EU Directives:



Low Voltage: 2014/35/EU

Restriction of Hazardous Substances (RoHS): 2011/65/EU & 2015/863/EU

Made for:

Zenitel GB Limited

Unit 17 - Cliffe Industrial Estate - Lewes - East Sussex - BN8 6JL - U.K.

[www.zenitel.com](http://www.zenitel.com)

Zenitel and its subsidiaries assume no responsibility for any errors that may appear in this publication, or for damages arising from the information therein. Zenitel, Vingtor-Stentofon and Phontech products are developed and marketed by Zenitel. The company's Quality Assurance System is certified to meet the requirements in NS-EN ISO 9001. Zenitel reserves the right to modify designs and alter specifications without notice. ZENITEL PROPRIETARY. This document and its supplementing elements, contain Zenitel or third party information which is proprietary and confidential. Any disclosure, copying, distribution or use is prohibited, if not otherwise explicitly agreed in writing with Zenitel. Any authorized reproduction, in part or in whole, must include this legend. Zenitel – All rights reserved.

Version 3 ASL\_Datasheet\_SPRF-06W-65-EN54