

- Wall Loudspeaker
- 6W 100V
- Size 6.5" (165 mm)
- Surface mount to wall or ceiling
- Vandal-resistant
- Full range sound quality
- Option with DC capacitor fitted
- Certified to EN 54-24



OVERVIEW

The SPRS-S-06W-65-EN54 is a 6W 100V surface mount loudspeaker which has a 6.5" (165mm) full-range chassis providing excellent sound quality with speech and background music, and which is certified to EN54-24. The speaker is fitted with a 100V transformer which has three power adjustment tapings of 6W, 3W and 1.5W.

The SPRS-S-06W-65-EN54 has a rectangular powder coated RAL 9010 metal chassis and grille, with the high quality powder coated finish giving good long-term protection and resistance to corrosion. The enclosure is ingress protection rated to IP21 and is coloured to match RAL9010 'Pure White'.

Surface mounting to a wall or ceiling is simply provided through the use of fixing screws, with the enclosure front attaching to the rear mounting panel with three screws. The 100 V loudspeaker line is connected via a two-pin ceramic terminal block. For additional reliability, a thermal fuse is provided, and the speaker chassis features a vibration-damping, moisture-resistant design. It is also compliant with the British Standard BS 5839, Part 8.

The loudspeaker is optionally available with a DC blocking capacitor fitted, in order to provide compatibility with DC loudspeaker line monitoring systems. The part number for this DC monitoring compatible version is SPRS-S-06W-65-EN54-DC.

Enhanced Acoustic Simulator for Engineers (EASE) data is available for this speaker on request.

TECHNICAL DATA

Power Tappings	6W / 3W / 1.5W
Impedance (100V)	1667 / 3333 / 6667 ohm
DC Capacitor (SPRS-S-06W-65-EN54-DC Version only)	1 µF 250V
Frequency Range	170 — 18,500 Hz
Frequency Response	70 — 23,500 Hz
SPL 1W / 1m, peak	98,3 dB
SPL , 1W / 4m, peak	86,3 dB
SPL Pmax / 4m, peak	94,0 dB
SPL IEC 60268-5, 1W/1m	94,0 dB
SPL IEC 60268-5, Pmax/1m	101,8 dB
SPL EN 54-24, Pmax/4m	90,0 dB
Sensitivity EN5 4-24, 1W / 4m	82,0 dB
Dispersion (-6dB, 500Hz) Horizontal / Vertical Plane*	180° (horizontal) / 180° (vertical)
Dispersion (-6dB, 1KHz) Horizontal / Vertical Plane*	160° (horizontal) / 160° (vertical)
Dispersion (-6dB, 2KHz) Horizontal / Vertical Plane*	120° (horizontal) / 120° (vertical)
Dispersion (-6dB, 4KHz) Horizontal / Vertical Plane*	76° (horizontal) / 76° (vertical)
Temperature range	-10 / +55°C
Dimensions	252 x 192x 82 mm
IP Rating	IP21
Weight (net)	2.04 kg
Colour	RAL9010
Connector	2-pin ceramic block
Mounting	Screws
Compliance	EN 54-24 / BS 5839-8, Part 8

* EN 54-24 Definitions for Speaker Reference Axis, Point, Plane + Horizontal & Vertical Planes:

- ☐ Reference Axis: Axis is through the centre of the speaker grille surface and is perpendicular to the grille surface.
- ☐ Reference Plane: Plane is across the front of the speaker grille surface and is perpendicular to the reference axis.
- ☐ Horizontal Plane: Plane contains the reference axis and is perpendicular to the reference plane.
- ☐ Vertical Plane: Plane contains the reference axis and is perpendicular to the reference plane.
- ☐ Reference Point: Point is at the centre of the front of the speaker grille surface where all the above intersect.

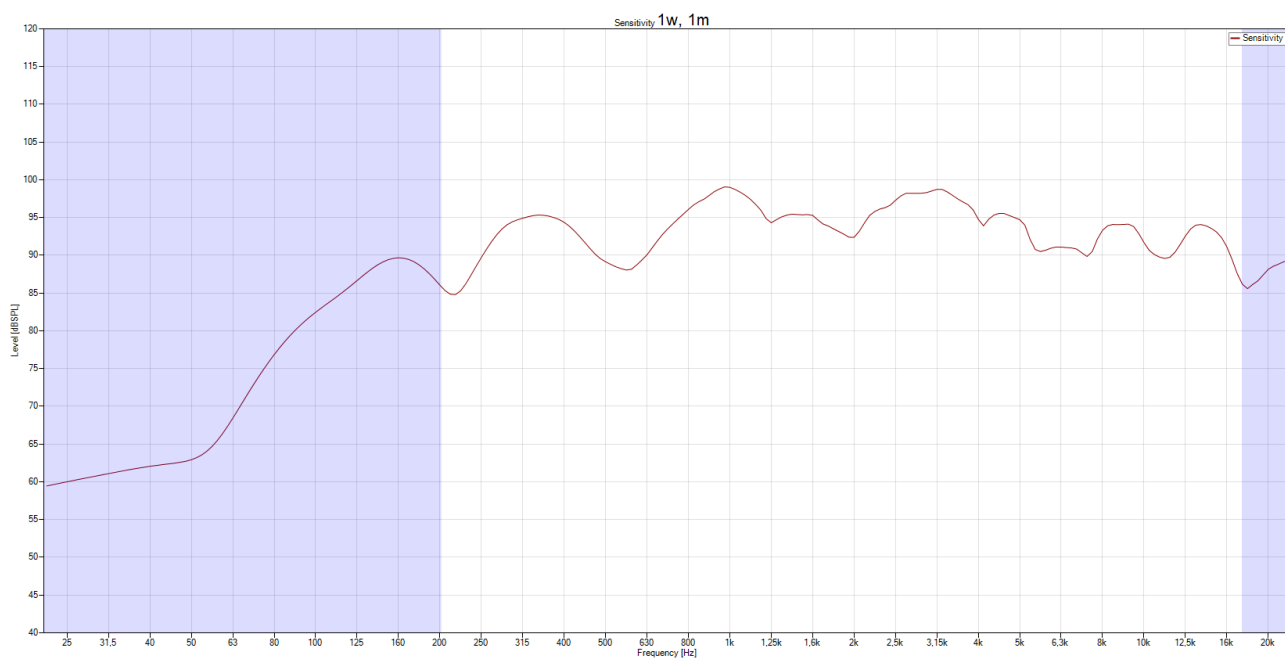
All measurements in the table above relate to the Reference Axis unless otherwise stated

EN 54-24 Annex A, Measurement Environments:

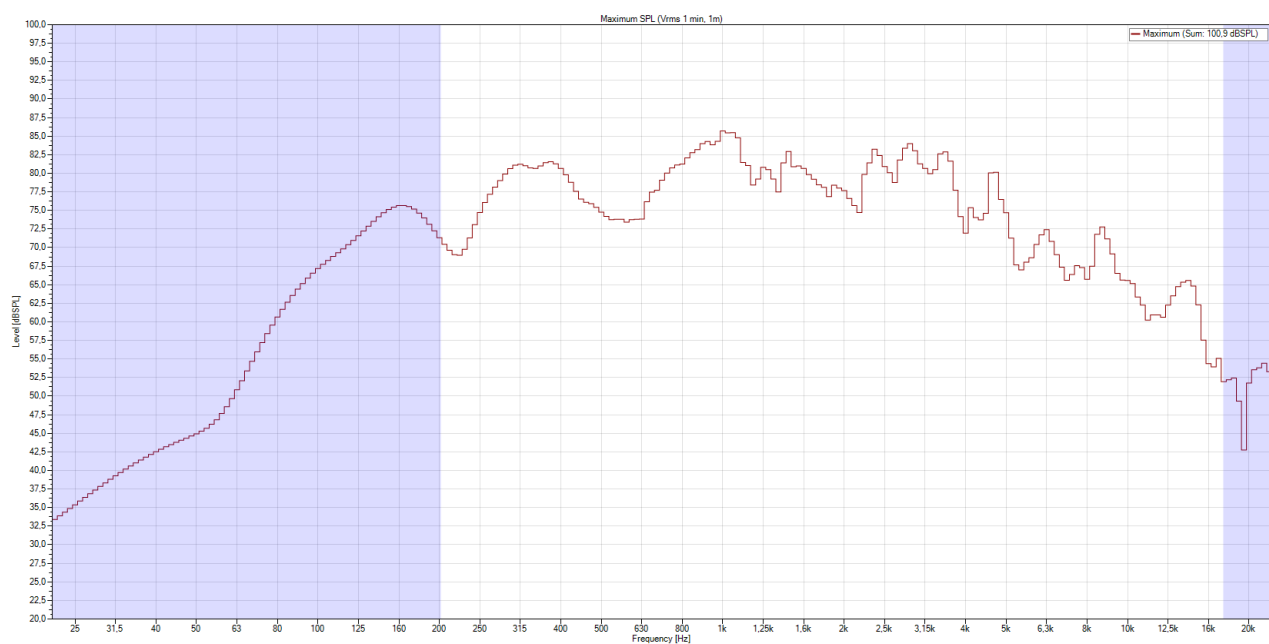
Flush-mounted loudspeakers e.g. ceiling loudspeakers, shall be measured under half-space free field conditions.

All other speakers shall be measured under free-field conditions or in a ground plane arrangement that simulates a free-field condition.

FREQUENCY RESPONSE DIAGRAM—SENSITIVITY 1W / 1m

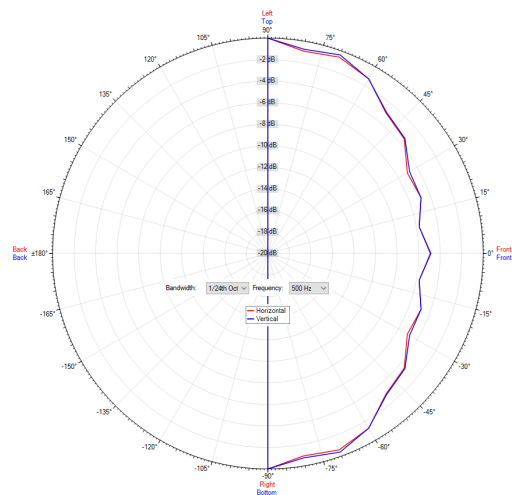


FREQUENCY RESPONSE DIAGRAM—MAXIMUM SPL (Vrms 1 min, 1m)

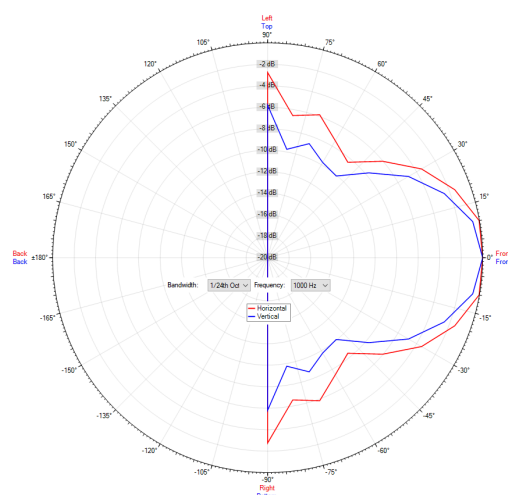


POLAR DIAGRAMS

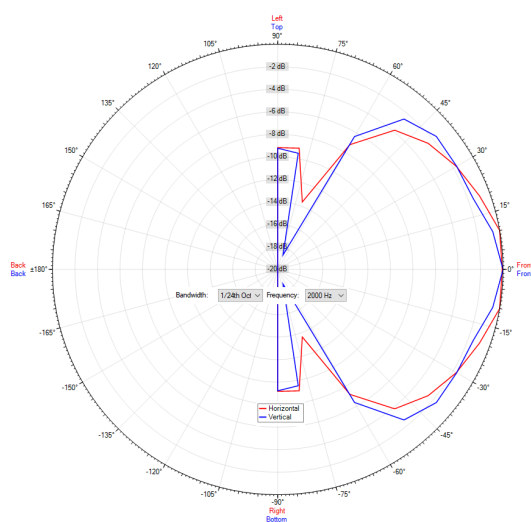
500 Hz



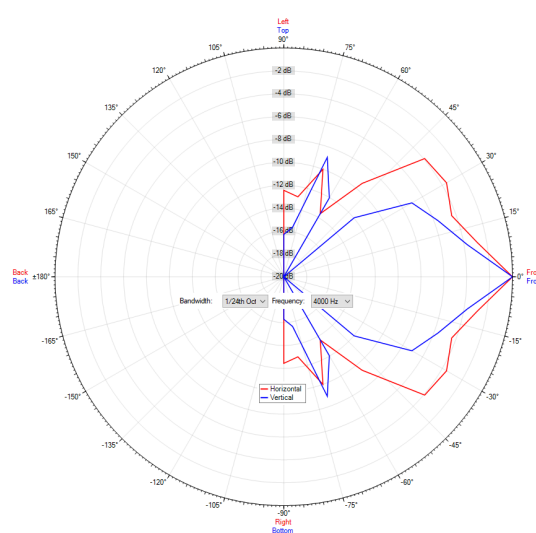
1,000 Hz



2,000 Hz

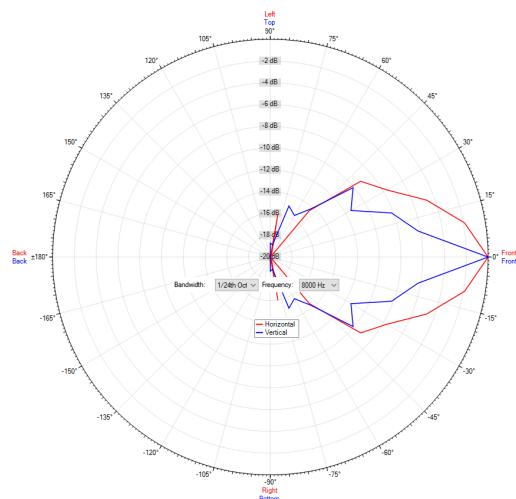


4,000 Hz

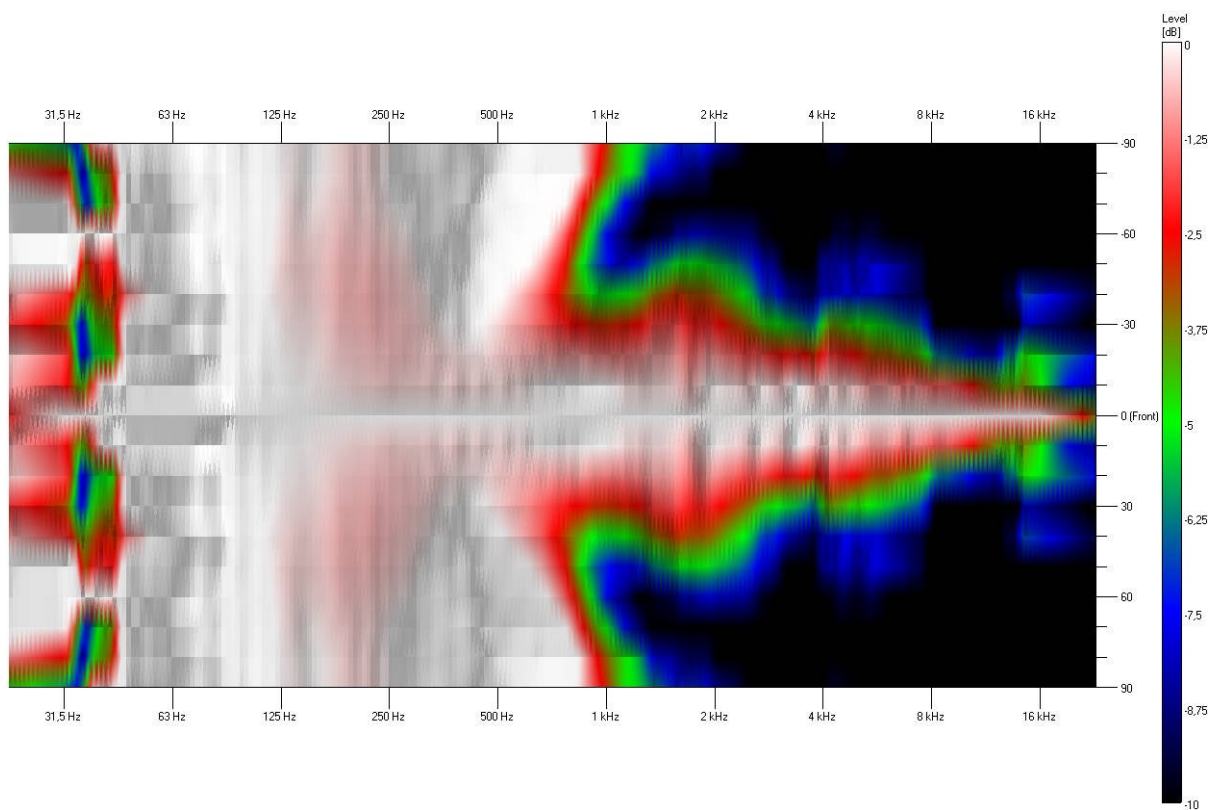


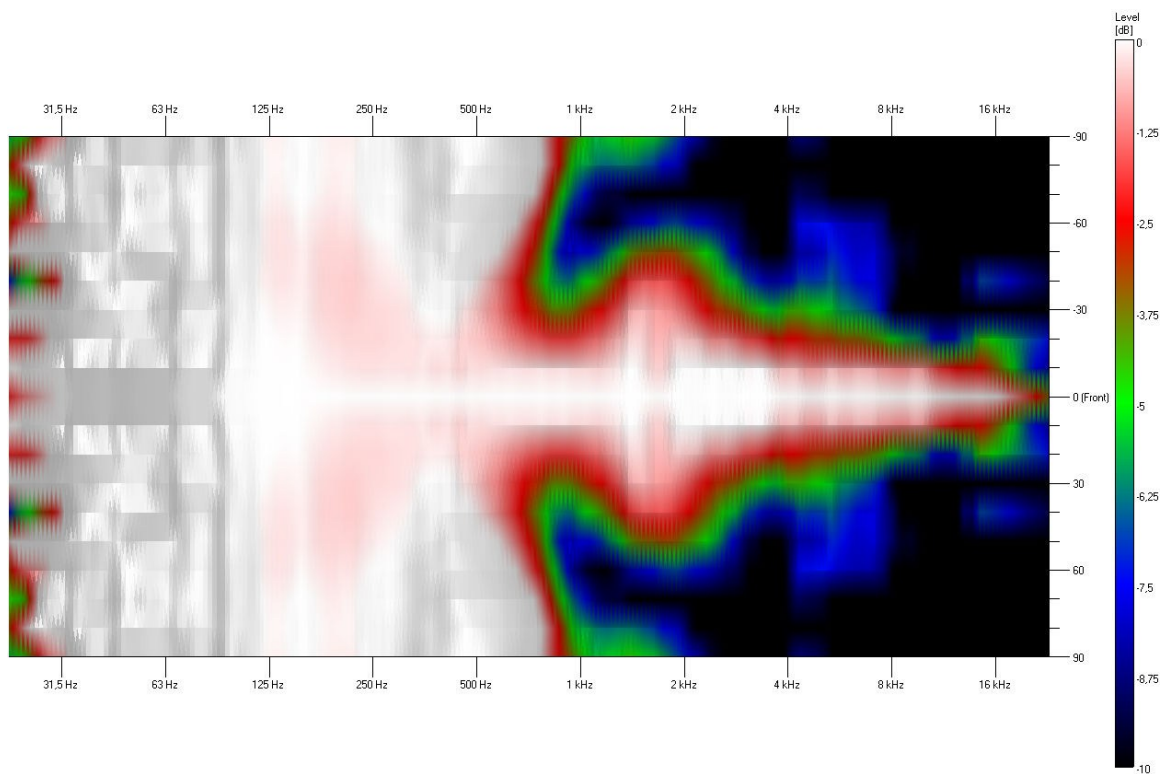
POLAR DIAGRAM

8,000 Hz

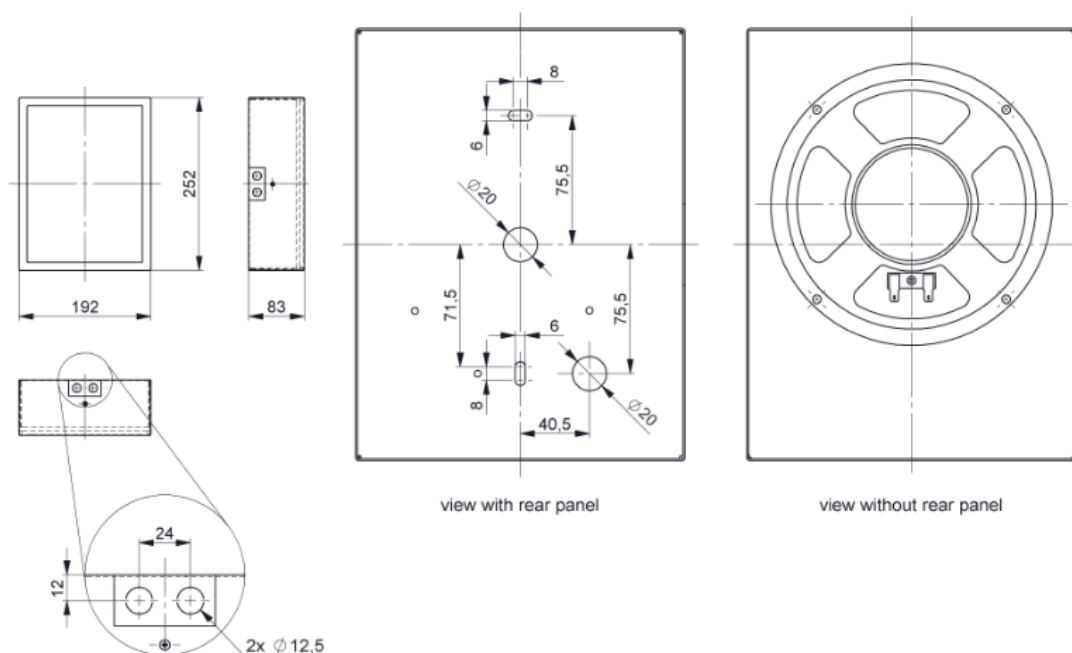


ISOBAR - HORIZONTAL



ISOBAR - VERTICAL


DIMENSIONAL DIAGRAM



all dimensions are in mm

This equipment is designed and manufactured to conform to the following EU Directives:



Low Voltage: 2014/35/EU

Restriction of Hazardous Substances (RoHS): 2011/65/EU & 2015/863/EU

Made for:

Zenitel GB Limited

Unit 17 - Cliffe Industrial Estate - Lewes - East Sussex - BN8 6JL - U.K.

www.zenitel.com

Zenitel and its subsidiaries assume no responsibility for any errors that may appear in this publication, or for damages arising from the information therein. Zenitel, Vingtor-Stentofon and Phontech products are developed and marketed by Zenitel. The company's Quality Assurance System is certified to meet the requirements in NS-EN ISO 9001. Zenitel reserves the right to modify designs and alter specifications without notice. ZENITEL PROPRIETARY. This document and its supplementing elements, contain Zenitel or third party information which is proprietary and confidential. Any disclosure, copying, distribution or use is prohibited, if not otherwise explicitly agreed in writing with Zenitel. Any authorized reproduction, in part or in whole, must include this legend. Zenitel – All rights reserved.