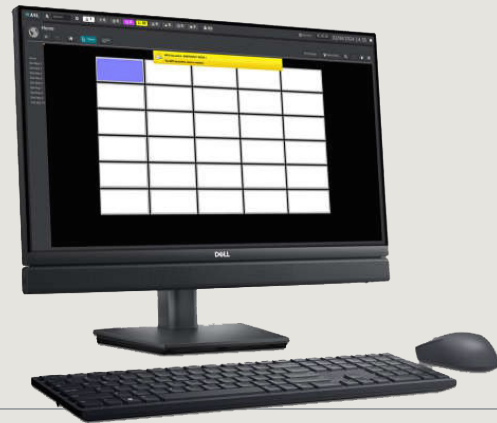


- ✓ Public Address control and supervision front end workstation
- ✓ Supports up to 384 PAVA zones
- ✓ Supports Live paging and message playback
- ✓ PAVA system audio monitoring and supervision
- ✓ Message management, Recording and Scheduling
- ✓ Customisable PA Zone buttons or Graphical User Interface (GUI)
- ✓ Touch Screen enabled



## VIPA-WS Range

### PA Touchscreen **Workstation**

Zenitel's VIPA-WS is a Linux-based touch screen workstation which provides a versatile and intuitive Graphical User Interface (GUI) for Zenitel Public Address systems. The workstation GUI is tailored for non-emergency control and monitoring of Zenitel's PA equipment. Its touch screen-friendly navigational structure and expansive target areas provide simple operation, whether each user prefers to operate the system with a mouse or their hands. The utilization of standard IP networking to connect to the IP enabled Zenitel PA equipment streamlines deployment in the field.

#### **Versatile Applications**

Designed with diverse audiences in mind — integrators, maintainers, or operators — the VIPA-WS addresses their specific needs, values, and capabilities. It serves as an optimal choice for delivering flexible live paging and prerecorded message playback in simple installations. Simultaneously, its advanced feature set renders it equally suitable for complex applications necessitating message automation or detailed PAVA system supervision.

#### **Stored Audio Messages**

The VIPA-WS enables the users to broadcast stored audio messages whenever required. The users can record and manage their own messages, as well as having a store for permanently saved standard message recordings. Stored messages can be included in schedules which automatically broadcast them into any selected PA zone or zones on a daily, weekly, or monthly time schedule. Broadcast schedules can be easily created and managed by the users, and can be turned on or off as required. The system shows a list of the automated broadcasts that will be made in the next hour to help the users stay in control of their announcements.

#### **Clear PAVA System Status, Alarms & Event Logging**

The GUI's PA zone buttons clearly show the broadcast state of their associated amplifiers by showing different button colours for different types of broadcast, for instance, highlighting a zone button in red if there is an Emergency microphone broadcast happening in that zone, and showing Green for live speech announcements from the workstation itself.

The VIPA-WS knows about all the devices in your Zenitel PAVA System, and also provides detailed fault monitoring, showing you in plain English if anything needs attention. For reference, the system keeps logs of its PA broadcasts and of the history of all of the alarms on the PA system.

#### **Live Paging Capabilities**

The VIPA-WS facilitates zone selection when employed alongside an Zenitel MPS desk microphone, empowering users to designate PA zones for live speech broadcast via the touchscreen. Furthermore, the Press To Talk (PTT) Speak Now button is provided on both the graphic display and on the microphone itself.

## Scalability

Sold as a pre-configured software and hardware combo, the VIPA-WS empowers control and monitoring of up to 384 zones, and multiple VIPA-WS units can be used with a single PAVA System. For large Multi Cluster Voice Alarm Public Address systems which exceed 384 zones or require enhanced capabilities, please contact Zenitel.

## Customization Options

The built-in GUI editor can be used to fine-tune the basic PA zone button matrix to operate your own choice of one or more GUI graphic images, ensuring that even the largest systems are easily navigable and meaningful. This includes the ability to import your custom graphics, to map your PA zone button areas, and to use multiple background graphic images to the zone selection buttons.

# KEY FUNCTIONALITY

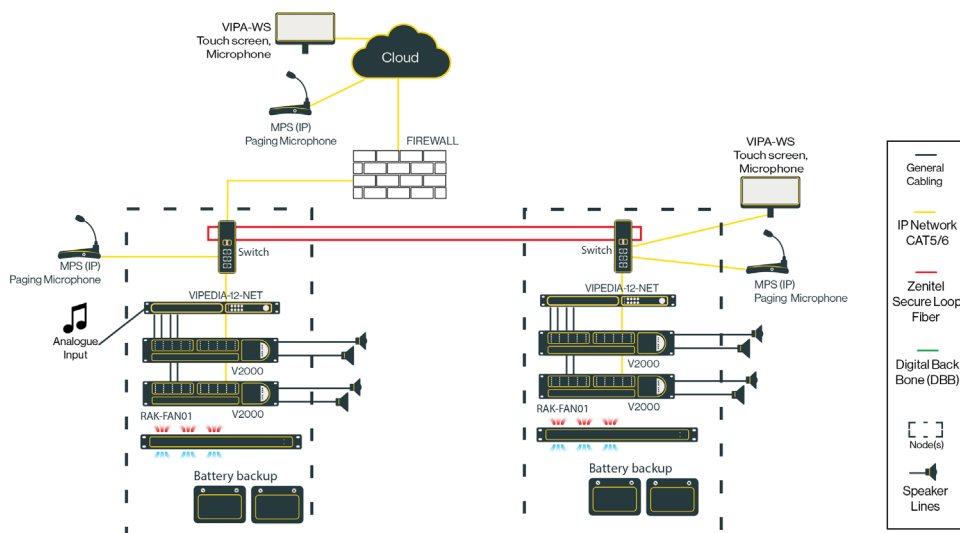
The VIPA-WS offers various features and functionality, providing the perfect value combination for your installation needs. These are detailed below.

| Feature / Function                  | Supported   |
|-------------------------------------|---|
| One off License                     | USB dongle protected, supplied along with the hardware  |
| Configuration                       | Configured by Zenitel to your agreed requirements before shipping   |
| Display PAVA Alarm Status           | Yes. Both as a prioritised filterable alarm list and status tree format, with an alarm summary and operators and maintainers information provided for every alarm |
| Button Zones (Status and selection) | Yes. Broadcasting source priority denoted by zone colour  |
| Graphical GUI Images                | Yes. The GUI graphics can be customized by Zenitel using customer-supplied .png image files   |
| Audio Monitoring                    | Yes. Listen into broadcasts being made in any PA zone   |
| Live Paging                         | Yes. Using an associated MPS Microphone   |
| Pre-recorded Message Management     | Yes. Your standard messages can be pre-loaded by Zenitel  |
| Message Recording                   | Yes with the MPS Microphone   |
| Pre-recorded Message Scheduler      | Yes   |
| User Accounts                       | Yes. The default user roles include: Operator, Administrator, and Maintainer  |

# SYSTEM ARCHITECTURE AND NETWORKING

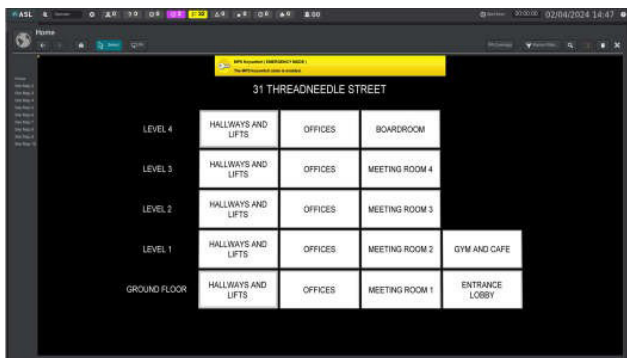
Implemented as a separate layer of functionality independent of the core Voice Alarm capabilities of the PAVA System, the VIPA-WS ensures that entertainment features remain distinct while safeguarding the integrity of emergency functions. This approach offers users flexibility and control, providing reassurance that the emergency functions of the Voice Alarm system remain intact.

The PA equipment receives live voice audio streaming via the IP network, utilizing standard IPV4 UDP multicast.



## EXAMPLE GUI

### Customisable GUI

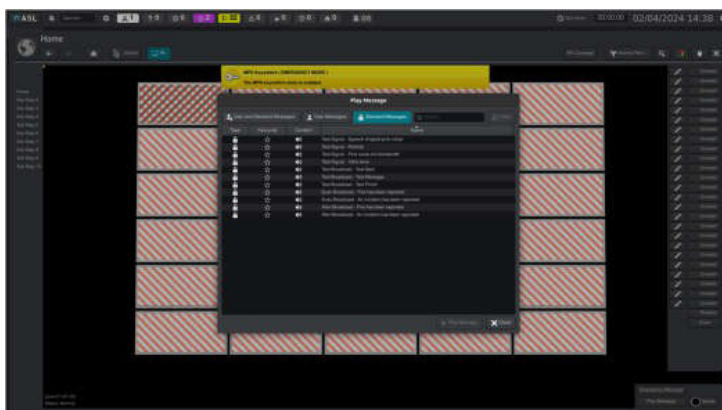


Example PA zone selection button matrix

To ensure even the largest systems are recognisable, meaningful and easy to navigate, the editing suite allows Zenitel to tailor the basic button matrix to your requirements with the use of custom graphics in one or more GUI screens. For example, a stadium might have a top-level screen for simple grouped paging, with drill downs to additional screens offering selection of individual sub-zones for PA broadcast

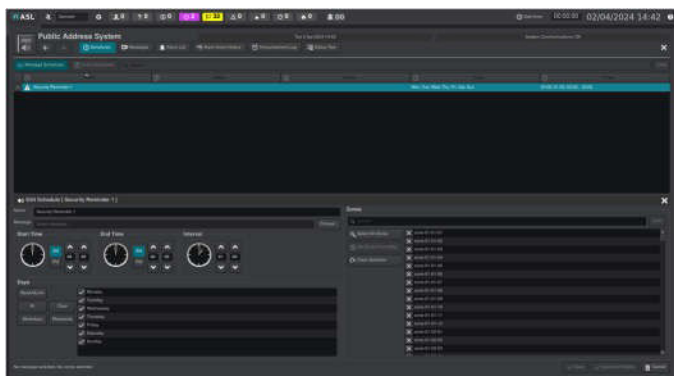
## Message Management

Non-emergency messages are there for you to play. Simply select your zone(s), then select the required message from the message list. "Favourite" your frequently-used messages for even quicker access. You don't even have to wait between messages: The VIPA-WS works with your Zenitel System to intelligently queue playback. New audio messages can be recorded by the user, and routine operational and security messages can be scheduled to be automatically broadcast at set intervals.



PA Message Manager Window

## Message Scheduler

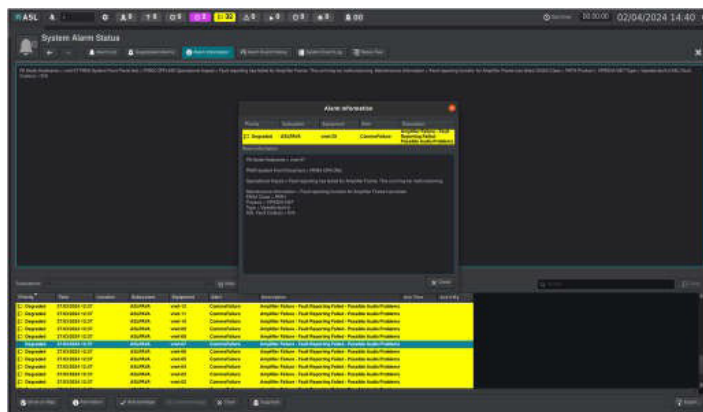


PA Message Scheduler Window

Designed to be easy and intuitive to use, the powerful scheduler allows message playback to operate automatically throughout the day. Schedules can run daily, or be restricted to certain days on a weekly or monthly schedule. The scheduler is great for notifying employees of break times.

## Zenitel PAVA System Status

The VIPA-WS provides detailed fault monitoring on all of the devices in your Zenitel PAVA System, showing you in plain English if anything needs attention.



Example Alarm Log

# SPECIFICATIONS

## General

|                              |   |
|------------------------------|---|
| Format                       | PC Touchscreen Workstation (Integrated Client Server) |
| Hardware Format              | All in one Desk Top                                   |
| Model                        | Dell OptiPlex All-in-One*                             |
| Screen Size                  | 23.8" FHD Touch*                                      |
| Workstation Speakers         | Integrated as part of the display*                    |
| Mouse and Keyboard           | Supplied  |
| Microphone                   | MPS01-G Sold Separately                               |
| Touchscreen Enabled          | Yes   |
| Operating System             | Ubuntu Linux  |
| Maximum Number of PAVA Zones | 384   |
| Pre-configured User Accounts | 3 (User, maintainer and admin)                        |

## Power Supply

|               |              |
|---------------|--------------|
| Input Voltage | 100-240 V AC |
| Mains Plug    | UK           |

## Connectivity

|                            |  |
|----------------------------|--|
| Ethernet Ports             | 1x100BASE-T                              |
| Audio and Control Protocol | PMC (48 kHz, 16 bit) & VIPA              |
| NTP Server                 | Uses an External NTP Time Source         |
| Protocols                  | UDP IP / Layer 2+3 / Multicast / Unicast |

## GUI

|                                   |  |
|-----------------------------------|--|
| Format                            | Buttons or with user provided graphics |
| User Provided Graphic File Format | PNG                                    |
| User Provided Graphic File Size   | 1796 pixels wide x 875 pixels high     |

## Product Part Code

|            |  |
|------------|--|
| VIPA-WS    | Public Address Touchscreen Workstation  Supporting up to 384 zones   Includes hardware, software and configuration |
| VIPA-WSCOM | Public Address Touchscreen Workstation  Supporting over 384 zones Includes hardware, software and configuration    |

## Compatible Products

|                                 |                                   |
|---------------------------------|-----------------------------------|
| VIPEDIA-12-NET / VIPEDIA-12-PRO | DSP Audio Controller / Router     |
| INTEGRA / INTEGRA-PRO Ranges    | Integrated Wall Mount PAVA System |
| VAIA Range                      | Integrated PAVA System            |
| MPS Range                       | MPS Microphone Range              |

## Pre-Recorded Messages

|                        |            |
|------------------------|------------|
| Maximum Message Length | 60 seconds |
| Message format         | WAV        |
| Sample Rate            | 48 kHz     |
| Bit Depth              | 16 Bit     |
| Maximum Record Length  | 60 seconds |

## Approval and Standard Compliance

|                   |  |
|-------------------|--|
| Environmental     | Refer to the PC manufacturer's datasheet * |
| Conformity Europe | Refer to the PC manufacturer's datasheet * |

## Mechanical

Refer to the PC manufacturer's datasheet \*

## Environmental

Refer to the PC manufacturer's datasheet \*

## Configuration and Software

|               |  |
|---------------|--|
| Configuration | Configured to your agreed requirements before shipping |
| Protection    | USB Dongle protected                                   |

\*The hardware may be subject to change without notification due to obsolescence issues beyond our control. However, we will ensure that minimum functionality is maintained. PC Manufacturer's datasheet available on request at the time of order.