

# Command Talk-Back & Public Address System



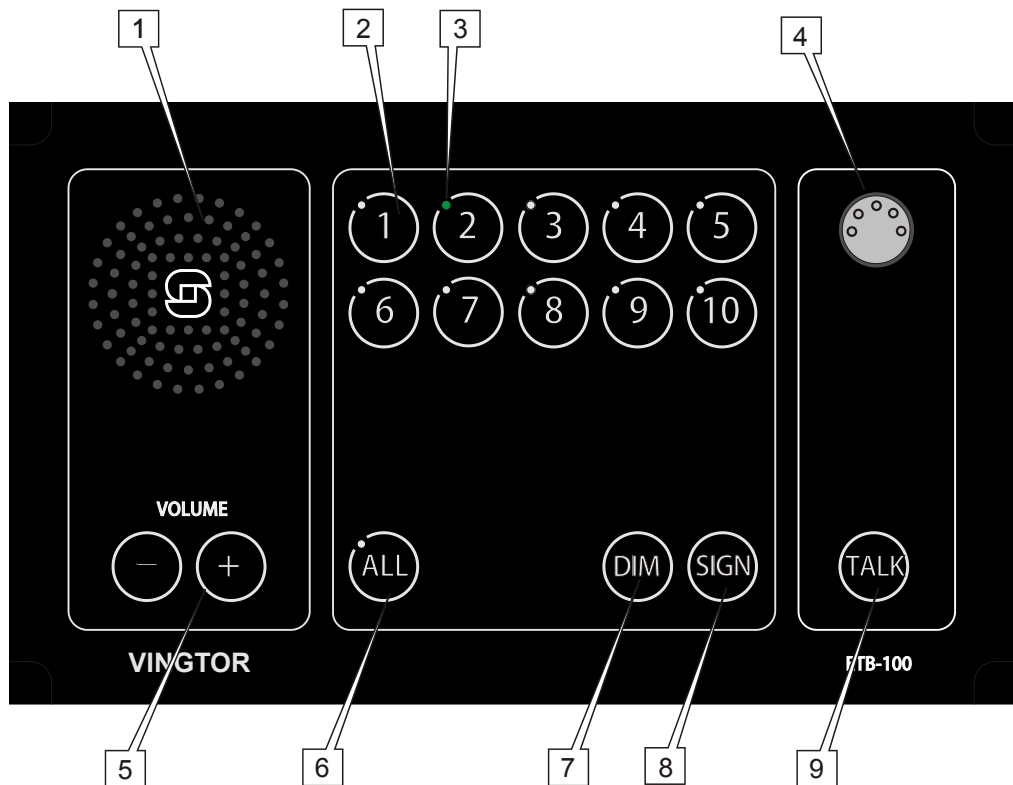
ETB-5 / ETB-10 / ETB-10A / ETB-100 / ETB-100A



## 1 ETB Central Unit Functions

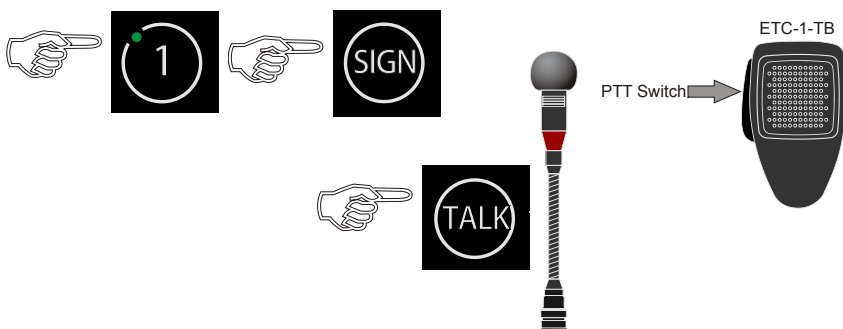
The ETB Talk-Back system comprises the ETB central unit and accessory equipment such as microphones and foot switch.

### ETB-5/ETB-10/ETB-10A/ETB-100/ETB-100A Central Unit



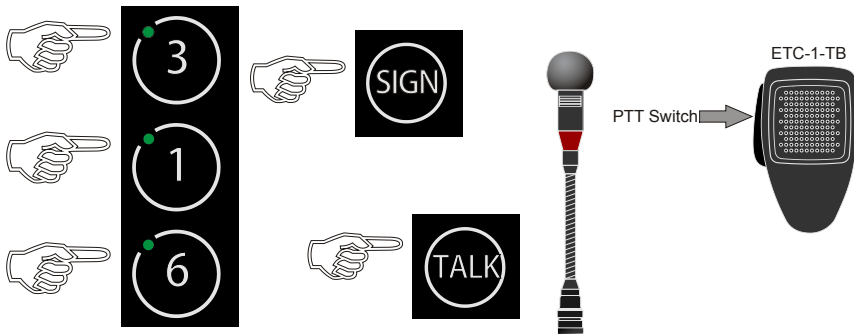
1. Loudspeaker: For communication and alarm signals
2. Line Buttons: Lines 1-5 for ETB-5, Lines 1-10 for ETB-10/ETB-10A and ETB-100/ETB-100A
3. Green LED: Indication light for each line button
4. Microphone Connector: For gooseneck or handheld microphone
5. VOLUME - +: Volume control buttons for panel loudspeaker
6. ALL: Button with indication LED for making All Call
7. DIM: Button for adjusting light intensity of indication LEDs
8. SIGN: Button for signal and activating extra signal device on substations
9. TALK: PTT switch for gooseneck microphone MB-30G

## 2 Making a Call to a Substation



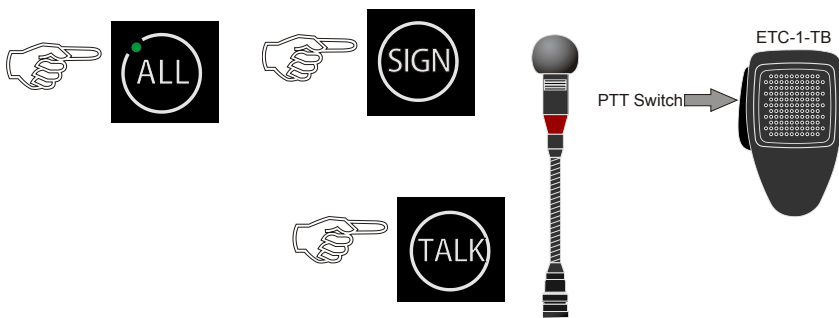
- Press the line button
  - the call is set up, indicated by a steady green LED
- Press the **SIGN** button
- Press the **TALK** button or **PTT switch** on the handheld microphone
- Speak clearly into the microphone
  - When the TALK button or PTT switch on microphone is released, the ETB will be in listening mode, and you will hear the communication from the selected station.
- Press the line button once more to terminate the call.

### 3 Making a Call to a Group of Substations



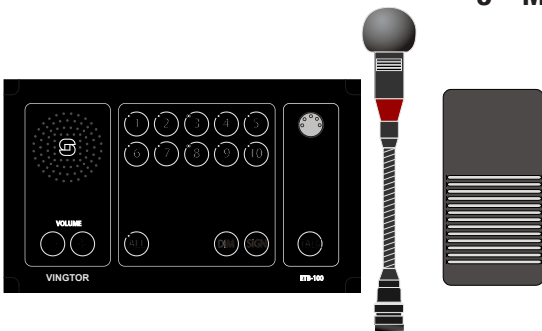
- Press the required line buttons.
  - The call is set up, indicated by the LEDs lighted a steady green in the selected buttons.
- Press the **SIGN** button
- Press the **TALK** button or **PTT switch** on the handheld microphone
- Speak clearly into the microphone
  - When the TALK button or PTT switch on microphone is released, the ETB will be in listening mode, and you will hear the communication from the selected station.
- Press the active line buttons once more to terminate the calls.

### 4 Making an All Call



- Press the **ALL** button, the call is set up.
  - Indicated by steady green LED in the ALL button.
- Press the **SIGN** button
- Press the **TALK** button or **PTT switch** on the handheld microphone
- Speak clearly into the microphone
  - When the TALK button or PTT switch on microphone is released, the ETB will be in listening mode, and you will hear the communication from the selected station.
- Press the **ALL** button once more to terminate the call

### 5 Making a Handsfree Call Using Foot Switch



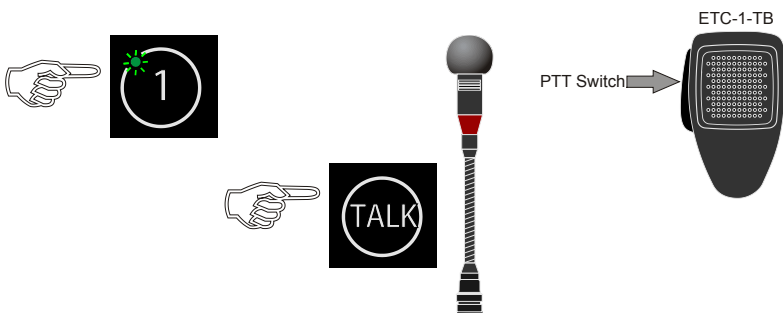
The equipment required in making a handsfree call from the ETB central unit are a gooseneck microphone (MB-30G) and a foot switch (U2410).

- Press the foot switch
- Speak clearly into the microphone

When the foot switch is released, the ETB will be in listening mode, and you will hear the communication from the selected station.

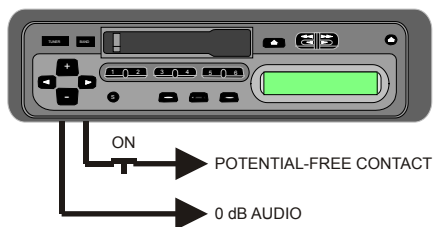
### 6 Receiving Calls from Substations

Incoming calls are indicated by flashing green LEDs in the respective line buttons and a beeping tone in the panel loudspeaker.



- Press the line buttons with the flashing green LED
  - the call is set up, indicated by a steady green LED
- Press the **TALK** button or **PTT switch** on the handheld microphone
- Speak clearly into the microphone
  - When the TALK button or PTT switch on microphone is released, the ETB will be in listening mode, and you will hear the communication from the selected station.
- Press the active line buttons once more to terminate the calls.

## 7 Audio from External Systems (ETB-10A)



PTT Switch →

To override the function:



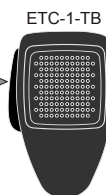
- Switch on the external equipment  
- the audio will be distributed to all substations and in the ETB-10A central unit

- Press the **TALK** button or **PTT switch** on the handheld microphone
- Speak clearly into the microphone
- Switch off the external equipment

## 8 Emergency PA from Call Station 1 (ETB-100A)

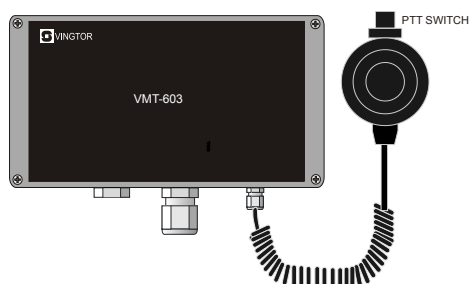


PTT Switch →



- Press the **ALL** button  
- the call is set up indicated by a steady green LED
- Press the **TALK** button or **PTT switch** on the handheld microphone
- Speak clearly into the microphone
- Press the **ALL** button once more to terminate the call

## 9 Emergency PA from Call Station 2 (VMT-603)



- Press the **PTT switch** on the microphone  
- This will mute the General Alarm system and override Talk-Back and single PA calls
- Speak clearly into the microphone

When the PTT switch is released, the ETB-100A will revert to normal Talk-Back mode.

## 10 Emergency PA from Call Station 3 (VMP-603)



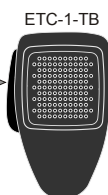
- Press the **TALK** button on VMP-603  
- The operation will mute the General Alarm system and override Talk-Back and single PA calls.
- Speak clearly into the microphone

When the **TALK** button is released, the ETB-100A will revert to normal Talk-Back mode.

## 11 Parallel Communication (STB-6/STB-6GN on Bridge Wing)



PTT Switch →



- Press the line button on the ETB to select station  
- the call is set up, indicated by a steady green LED
- Press the **PTT switch** or **TALK** button on parallel stations STB-6 or STB-6GN
- Speak clearly into the microphone

When the PTT switch or TALK button is released, the parallel station will be in listening mode and you will hear the communication from the selected station in the loudspeaker.