

CXL 70-1 LW

Unity-Gain, Omnidirectional Base Station and Marine Antenna for the UHF-Band

DESCRIPTION:

CXL 70-1 LW is a 0 dBd, vertically polarised, omnidirectional base station or marine antenna for the frequency band 406-470 MHz.

The carefully designed, broadbanded $1/2\lambda$ -dipole radiating element is made of brass tube and sealed in a white conical protection tube of glass-fiber, which has very low wind load.

The antenna is provided with our sturdy type -LW- mast mount, which is a lightweight, all-purpose, gold-anodized aluminium mounting bracket with stainless steel fittings. The antenna can be mounted on vertical or horizontal mast tubes, 16 to 54 mm in outer diameter. Further, the construction of the mount makes it possible to lead the cable either along the inside or on the outside of the mast tube.

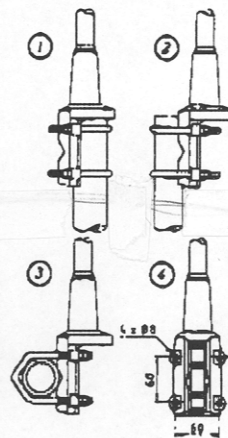
To substantially reduce noise caused by atmospherical discharges, all metal parts in the antenna are DC-grounded. Consequently, the antenna shows a DC-short across the coaxial cable.

CXL 70-1 LW is a vibration-proof, lightweight, slim-line, corrosion resistant modern style base station and marine antenna.

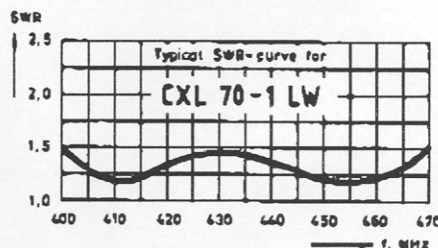
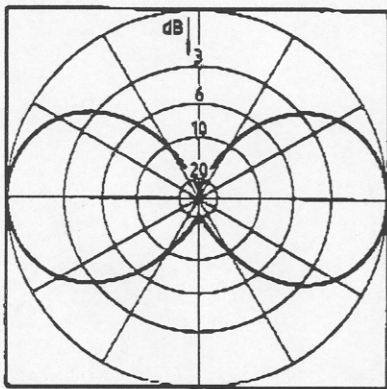
SPECIFICATIONS:

MODEL	: CXL 70-1 LW
ANTENNA TYPE	: $1/2\lambda$ coaxial dipole, broad-banded
FREQUENCY	: 406-470 MHz
IMPEDANCE	: Nom. 50 Ω
POLARISATION	: Vertical
GAIN	: 0 dBd
BANDWIDTH	: 64 MHz
SWR	: ≤ 1.5
MAX. POWER	: 150 Watts
CONNECTOR	: N-female
WIND SURFACE	: 0.0180 m ²
WIND LOAD	: 21,3 N (at 150 km/h)
ANTENNA COLOUR	: Marine White
TOTAL LENGTH	: Approx. 0.88 m
WEIGHT	: Approx. 0.65 kg
MOUNTING	: On 16 to 54 mm dia. mast tube

MULTI-PURPOSE MOUNTING BRACKET:



- ① Mast tube D_i, min. = 30 mm
Mast tube D_o, max. = 54 mm
- ② Mast tube D_o, max. = 54 mm
Mast tube D_o, min. = 16 mm
- ③ Mast tube D_o, max. = 54 mm
Mast tube D_o, min. = 16 mm

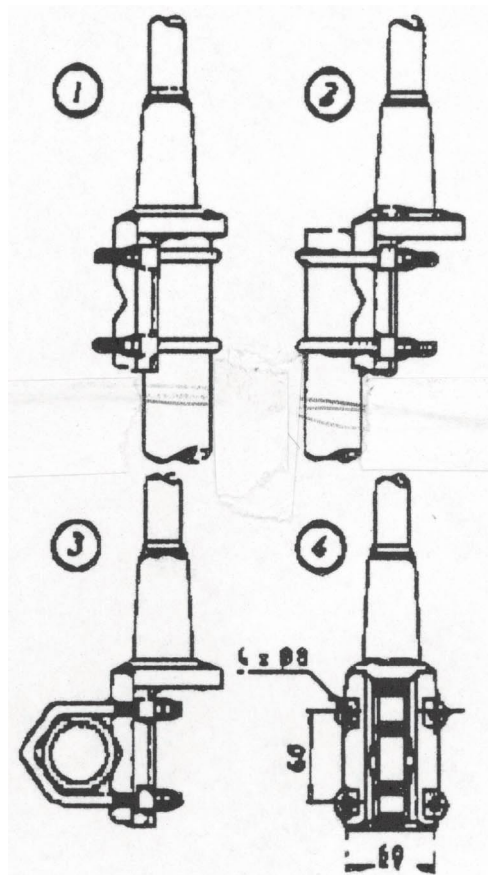


PLEASE NOTE:

The antenna element is, as standard, DC-isolated from the mast tube to prevent DC-currents from causing electrolytical corrosion. This feature is especially important, if the antenna is used onboard ships.

However, when used as a base station antenna, it may be prescribed, that the antenna -earth- terminal (~ the cable braid) should be directly connected to the mast tube. This is easily done by using the accompanying nut and serrated lock washer, which are screwed firmly onto the antenna connector, thereby DC-connecting the antenna element to the mast bracket and the mast tube.





- ① Mast tube D_i , min. = 30 mm
Mast tube D_o , max. = 54 mm
- ② Mast tube D_o , max. = 54 mm
Mast tube D_o , min. = 16 mm
- ③ Mast tube D_o , max. = 54 mm
Mast tube D_o , min. = 16 mm